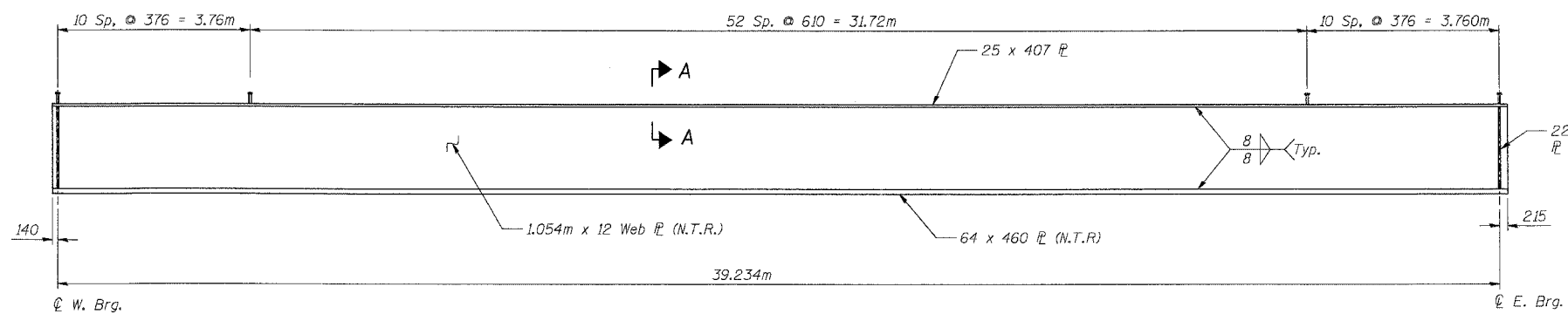
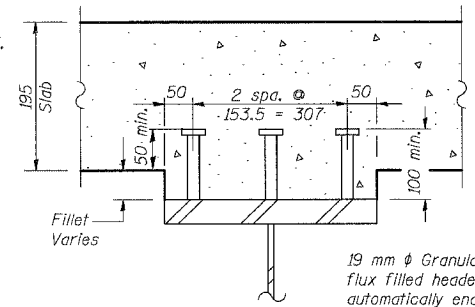


F.A.P. RTE.	SECTION	COUNTY	TOTAL SHEETS	SHEET NO.
343		COOK	24	10
STA.	TO STA.			
FED. ROAD DIST. NO.	ILLINOIS	FED. AID PROJECT		
*70HB-F & 70D-Y-B-F CONTRACT NO. 60B70				

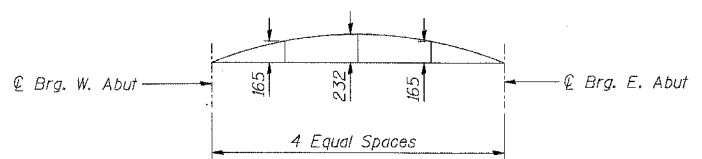


GIRDER ELEVATION



19 mm ϕ Granular or solid flux filled headed studs automatically end welded to flange. (No. Req'd Per Girder = 219, Total No. Req'd = 2409)

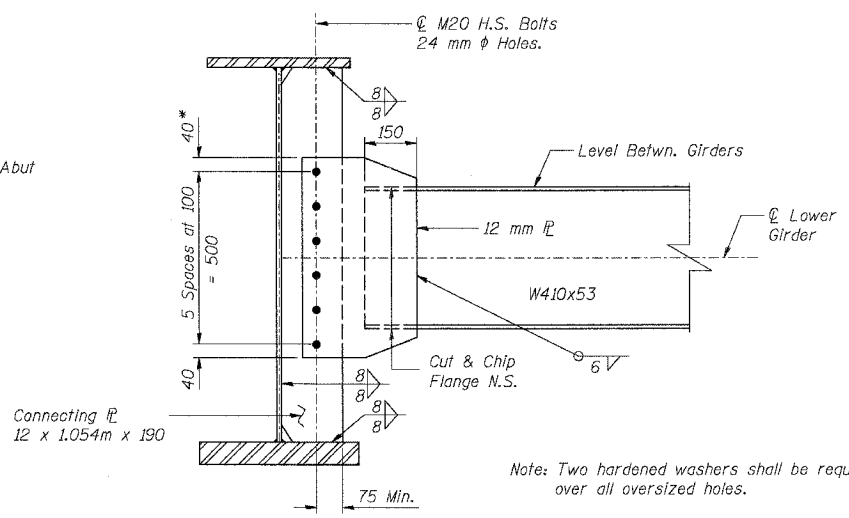
SECTION A-A



CAMBER DIAGRAM

GIRDER	WEST ABUT. BRG.	EAST ABUT. BRG.
1	269.590	269.074
2	269.511	268.982
3	269.430	268.888
4	269.349	268.794
5	269.267	268.700
6	269.186	268.605
7	269.103	268.509
8	269.020	268.412
9	268.937	268.315
10	268.853	268.216
11	268.768	268.118

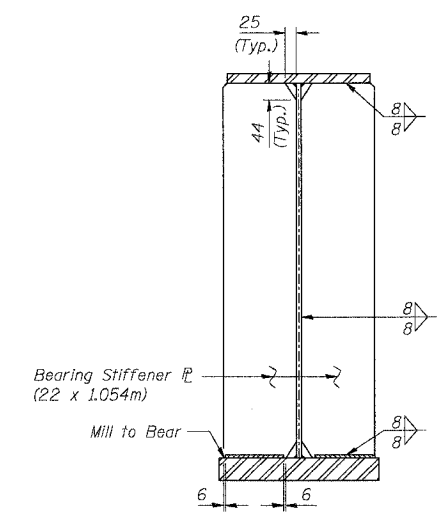
TOP OF WEB ELEVATIONS
(For Fabrication Use Only)



DIAPHRAGM D1

* Provide 24 mm x 40 mm vertical slotted holes in 12 mm flange for diaphragms in stage construction bay, Stage II side. Increase 40 mm dimension to 60 mm in plate in stage construction bay, Stage II side. 8 mm structural plate washers shall be placed over slotted holes. Diaphragm in stage construction bay shall not be installed until after Stage II pour is completed. Slotted hole bolts shall be finger-tightened prior to the deck closure pour and fully-tightened after completion of the deck pour.

Note: Two hardened washers shall be required over all oversized holes.



BEARING STIFFENER

NOTES:

1. N.T.R. denotes members to which notch toughness requirements are applicable.
2. All steel shown for the Girders and Bearing Stiffeners shall be AASHTO M270M Grade 345.
3. All steel shown for the Diaphragm, Connecting Plates and Angles shall be AASHTO M270M Grade 250.

STUD SHEAR CONNECTORS ARE NOT PART OF THIS CONTRACT

REVISIONS	
NAME	DATE

SHT. S-10 OF S-24
ILLINOIS DEPARTMENT OF TRANSPORTATION
IL ROUTE 68 OVER US-14 & UPRR
F.A.P. ROUTE 343 SECTION 70HB-F & 70D-Y-B-F
COOK COUNTY
STRUCTURE NO. 016-2861 & 016-2732
GIRDER ELEVATION & STEEL DETAILS
SN 016-2861
DESIGNED: JAN DRAWN: BTO
DATE: 6/06 CHECKED: BTO CHECKED: JAN