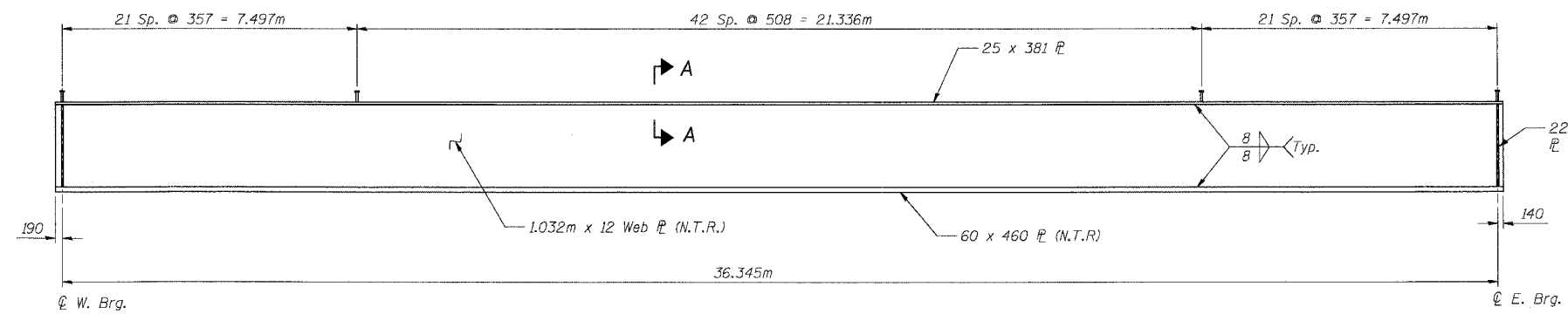
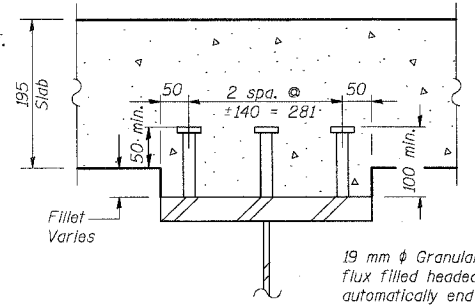


|  |         |                           |              |           |
|--|---------|---------------------------|--------------|-----------|
| F.A.P. R.T.E.                          | SECTION | COUNTY                    | TOTAL SHEETS | SHEET NO. |
| 343                                    |         | COOK                      | 24           | 20        |
| STA.                                   |         | TO STA.                   |              |           |
| FED. ROAD DIST. NO.                    |         | ILLINOIS FED. AID PROJECT |              |           |
| *70HB-F & 70D-Y-B-F CONTRACT NO. 60B70 |         |                           |              |           |

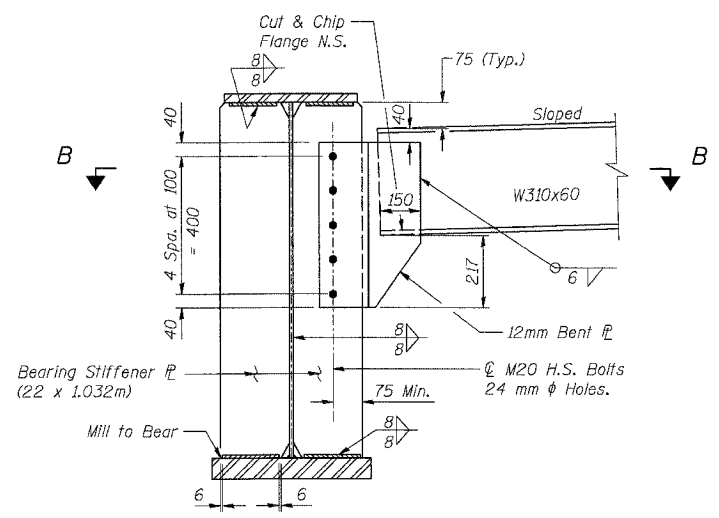


**GIRDER ELEVATION**

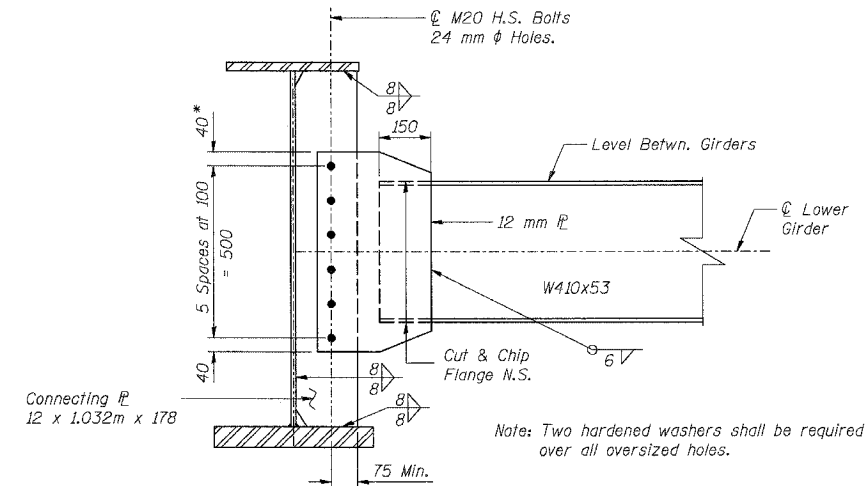


**SECTION A-A**

19 mm φ Granular or solid flux filled headed studs automatically end welded to flange. (No. Req'd Per Girder = 255, Total No. Req'd = 2550)

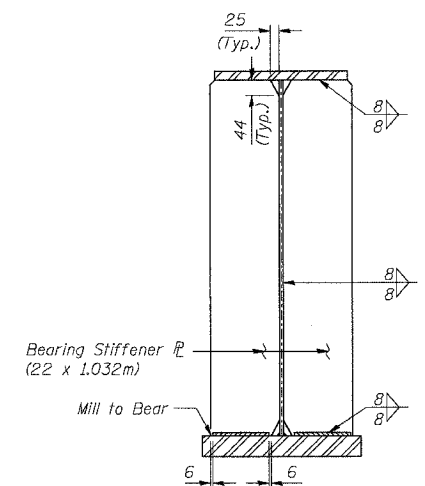


**END DIAPHRAGM D2**  
(18 Required)



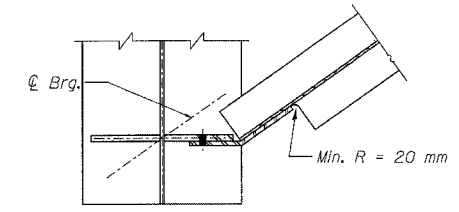
**DIAPHRAGM D1**  
(37 Required)

\* Provide 24 mm x 40 mm vertical slotted holes in 12 mm flange for diaphragms in stage construction bay, Stage II side. Increase 40 mm dimension to 60 mm in plate in stage construction bay, Stage II side. 8 mm structural plate washers shall be placed over slotted holes. Diaphragm in stage construction bay shall not be installed until after Stage II pour is completed. Slotted hole bolts shall be finger-tightened prior to the deck closure pour and fully-tightened after completion of the deck pour.

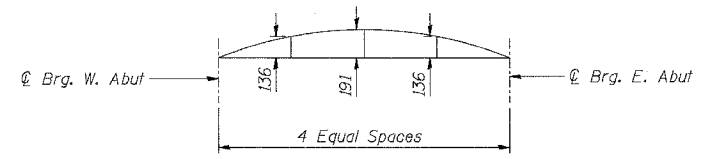


**BEARING STIFFENER**

**STUD SHEAR CONNECTORS ARE NOT PART OF THIS CONTRACT**



**SECTION B-B**



**CAMBER DIAGRAM**

| GIRDER | WEST ABUT. BRG. | EAST ABUT. BRG. |
|--------|-----------------|-----------------|
| 1      | 269.368         | 269.680         |
| 2      | 269.323         | 269.623         |
| 3      | 269.277         | 269.565         |
| 4      | 269.230         | 269.506         |
| 5      | 269.183         | 269.446         |
| 6      | 269.136         | 269.386         |
| 7      | 269.088         | 269.325         |
| 8      | 269.039         | 269.263         |
| 9      | 268.990         | 269.200         |
| 10     | 268.940         | 269.137         |

**TOP OF WEB ELEVATIONS**  
(For Fabrication Use Only)

**NOTES:**

1. N.T.R. denotes members to which notch toughness requirements are applicable.
2. All steel shown for the Girders and Bearing Stiffeners shall be AASHTO M270M Grade 345.
3. All steel shown for the Diaphragm, Connecting Plates and Angles shall be AASHTO M270M Grade 250.

| REVISIONS |      |
|-----------|------|
| NAME      | DATE |
|           |      |
|           |      |
|           |      |
|           |      |
|           |      |
|           |      |
|           |      |
|           |      |
|           |      |

ILLINOIS DEPARTMENT OF TRANSPORTATION  
 IL ROUTE 68 OVER US-14 & UPRR  
 F.A.P. ROUTE 343 SECTION 70HB-F & 70D-Y-B-F  
 COOK COUNTY  
 STRUCTURE NO. 016-2861 & 016-2732  
 GIRDER ELEVATION & STEEL DETAILS  
 SN 016-2732  
 DESIGNED: JAN DRAWN: BTO  
 DATE: 6/06 CHECKED: BTO CHECKED: JAN

SHT. S-20 OF S-24