

CONTRACT NO. 60B89

| F.A. ROUTE NO.      | SECTION                   | COUNTY | TOTAL SHEETS | SHEET NO. |
|---------------------|---------------------------|--------|--------------|-----------|
| 351                 | (537&537 X) T             | COOK   | 8            | 1         |
| FED. ROAD DIST. NO. | ILLINOIS FED. AID PROJECT |        |              |           |

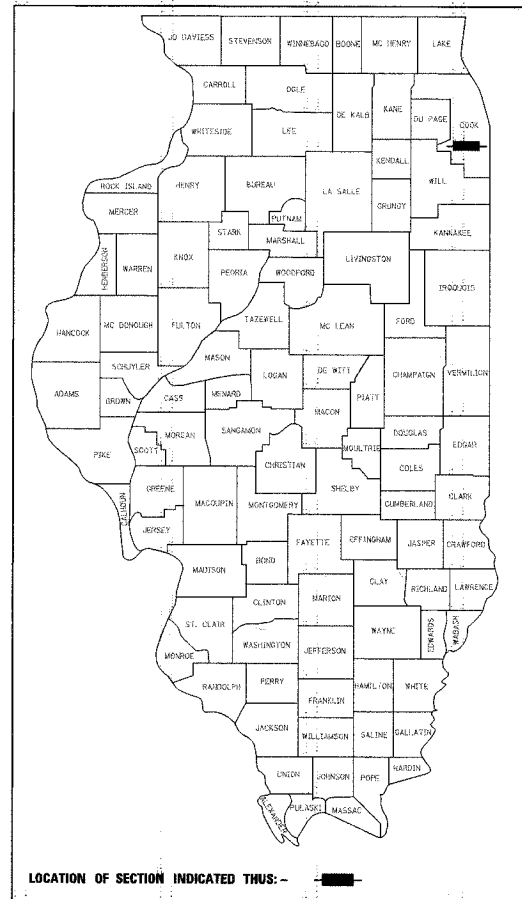
D-91-337-06

STATE OF ILLINOIS  
DEPARTMENT OF TRANSPORTATION  
DIVISION OF HIGHWAYS  
**PLANS FOR PROPOSED  
HIGHWAY**

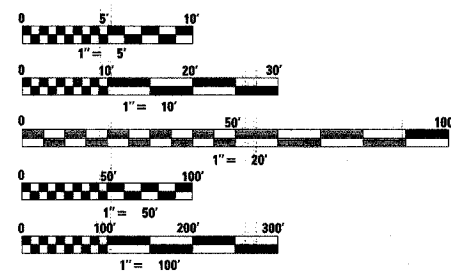
FAP 351 (US 6 /159TH STREET)  
AT METRA ENTRANCE W/O IL 50  
SECTION: (537 & 537 X) T  
SEWER REPAIR  
COOK COUNTY  
C-91-017-07

FOR INDEX OF SHEETS, SEE SHEET NO. 2

TRAFFIC DATA  
EXISTING ADT  
33,900 (2005)  
SPEED LIMIT 40 MPH

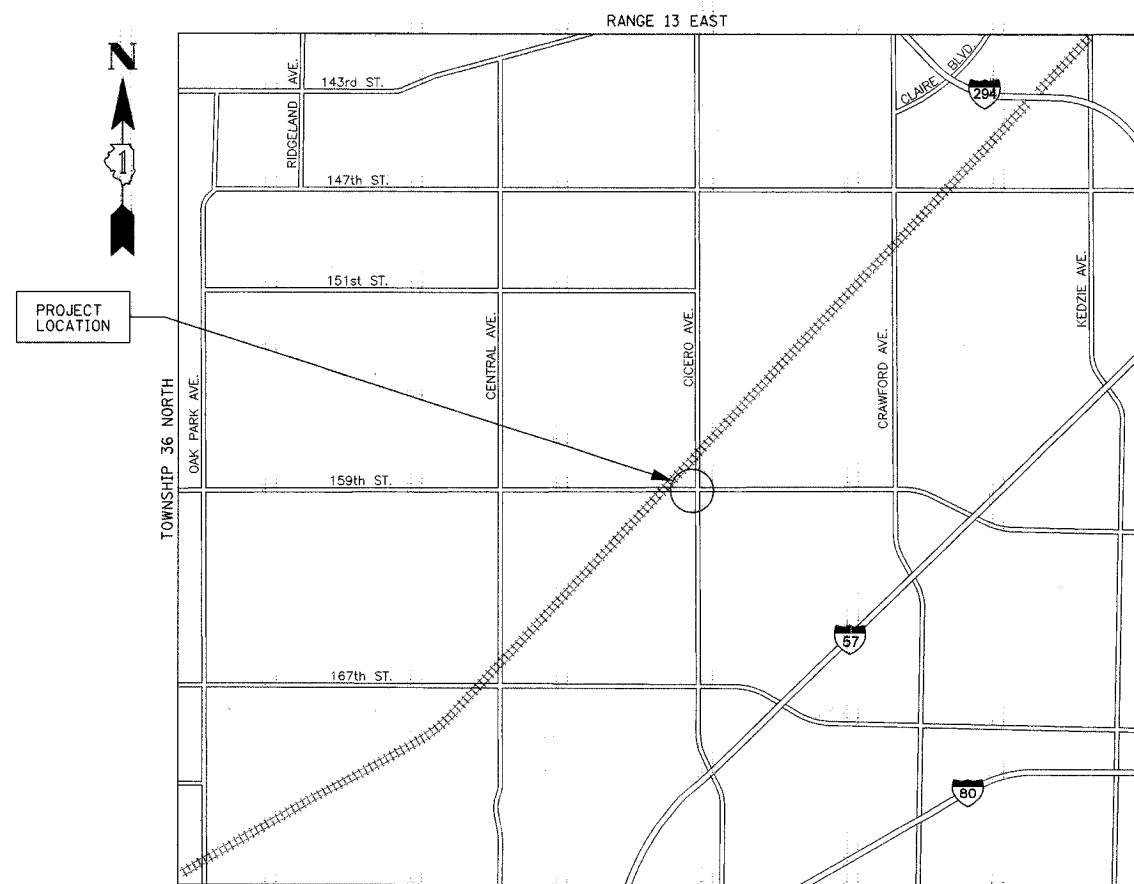


PROJECT LOCATED IN THE  
CITY OF OAK FOREST



FULL SIZE PLANS HAVE BEEN PREPARED USING STANDARD  
ENGINEERING SCALES, REDUCED SIZED PLANS WILL NOT  
CONFORM TO STANDARD SCALES, IN MAKING MEASUREMENTS  
ON REDUCED PLANS, THE ABOVE SCALES MAY BE USED.

J.U.L.I.E. JOINT UTILITY LOCATION INFORMATION  
FOR EXCAVATION 1-800-892-0123



BREMEN TOWNSHIP  
NOT TO SCALE

GROSS AND NET LENGTH OF PROJECT: 20 FT (0 MI)

DISTRICT ONE PLAN PREPARATION ENGINEER: KEN ENG (847) 705-4247

CONTRACT NO. 60B89

STATE OF ILLINOIS  
DEPARTMENT OF TRANSPORTATION  
DIVISION OF HIGHWAYS

SUBMITTED Sept. 18, 2006

Diane O'Keefe  
DEPUTY DIRECTOR OF HIGHWAYS, REGION 1 ENGINEER

October 13, 2006  
Mike New  
ENGINEER OF DESIGN AND ENVIRONMENT

October 13, 2006  
Milton R. See, P.E.  
DIRECTOR, DIVISION OF HIGHWAYS

PETER M. JOHNSON  
062-047647  
REGISTERED  
PROFESSIONAL  
ENGINEER  
OF  
ILLINOIS  
Johnston  
9-14-06  
Expires 11-30-07

PRINTED BY THE AUTHORITY OF  
THE STATE OF ILLINOIS

GRAEF, ANHALT, SCHLOEMER & ASSOCIATES, INC.  
ENGINEERS & SCIENTISTS  
8501 W. Higgins Road, Suite 280  
Chicago, Illinois 60631  
(773) 399-0112