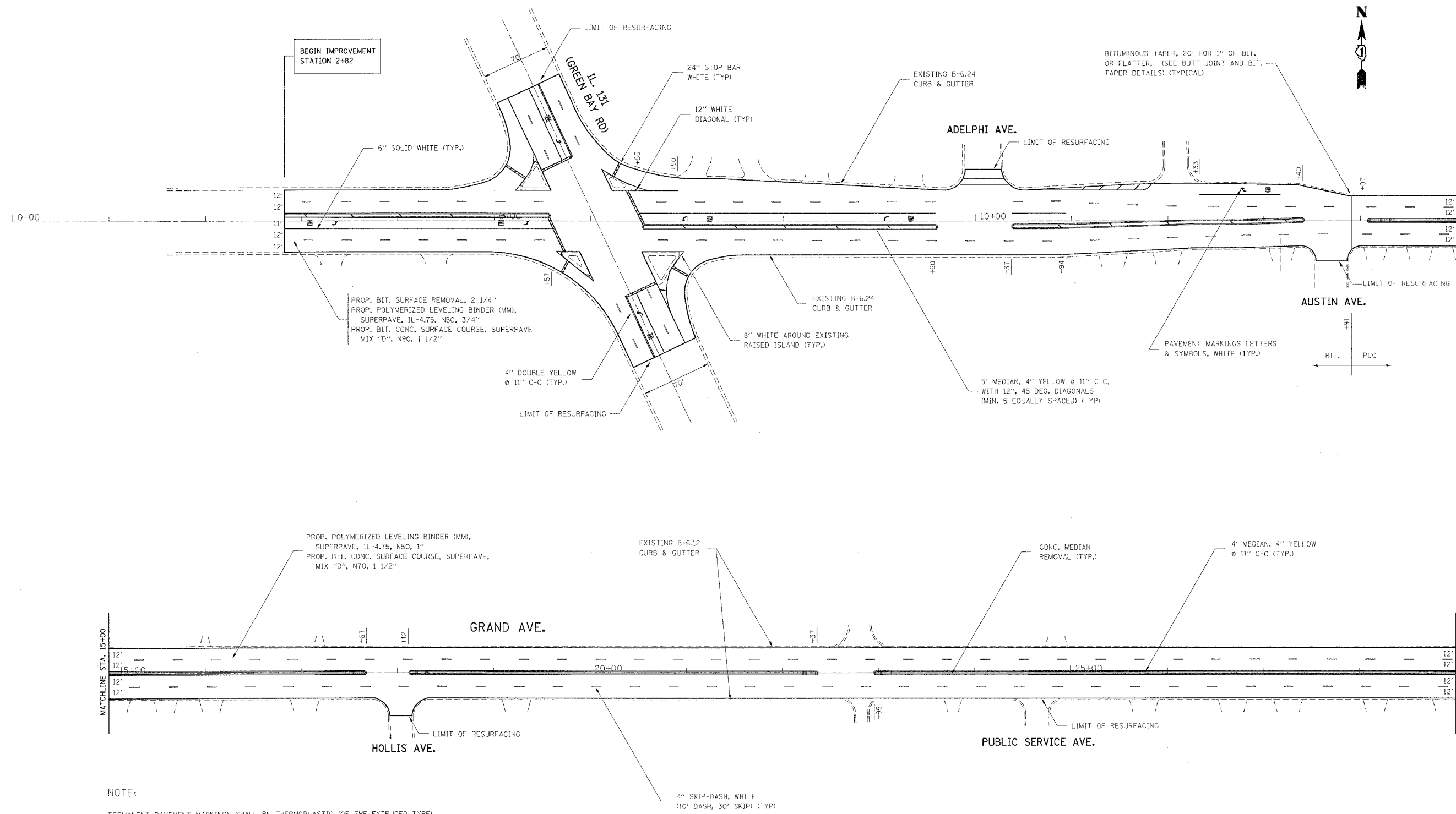
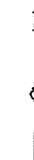


F.A.P. RTE.	SECTION	COUNTY	TOTAL SHEETS	SHEET NO.
541	2000-112 RS	LAKE	35	9
STA. 2+82		TO STA. 29+00		
FED. ROAD DIST. NO. 1		ILLINOIS FED. AID PROJECT		

CONTRACT NO. 62056



NOTE:

PERMANENT PAVEMENT MARKINGS SHALL BE THERMOPLASTIC (OF THE EXTRUDED TYPE) CONFORMING TO IDOT STANDARD SPECIFICATIONS. PERMANENT PAVEMENT MARKINGS SHALL BE PLACED IN ACCORDANCE WITH THE "DISTRICT ONE TYPICAL PAVEMENT MARKINGS" DETAIL (TC-13)

RAISED REFLECTIVE PAVEMENT MARKERS SHALL BE IN ACCORDANCE WITH THE DISTRICT ONE "TYPICAL APPLICATION RAISED REFLECTIVE PAVEMENT MARKERS DETAIL"

THE RESIDENT ENGINEER SHOULD CONTACT MS. DEBBIE HANLON, AREA TRAFFIC ENGINEER AT (847) 438-2300 PRIOR TO PLACING ANY PERMANENT PAVEMENT MARKINGS.

REVISIONS	
NAME	DATE

ILLINOIS DEPARTMENT OF TRANSPORTATION

**GRAND AVE.
ROADWAY AND PAVEMENT
MARKING PLANS**

SCALE: VERT. 1"=50"
HORIZ. 1"=50"

DRAWN BY
CHECKED BY

PLOT DATE = 8/28/2006
 PLOT SCALE = 1/8"=1'-0"
 PLOT USER = wjg
 USER NAME = wjg