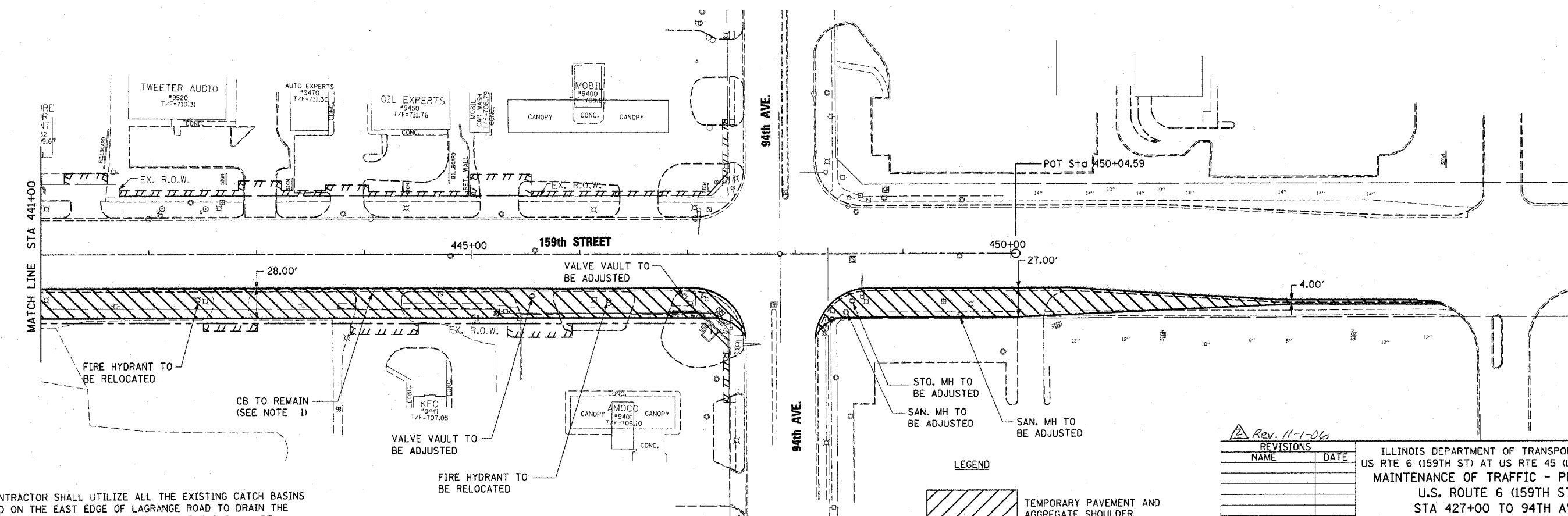
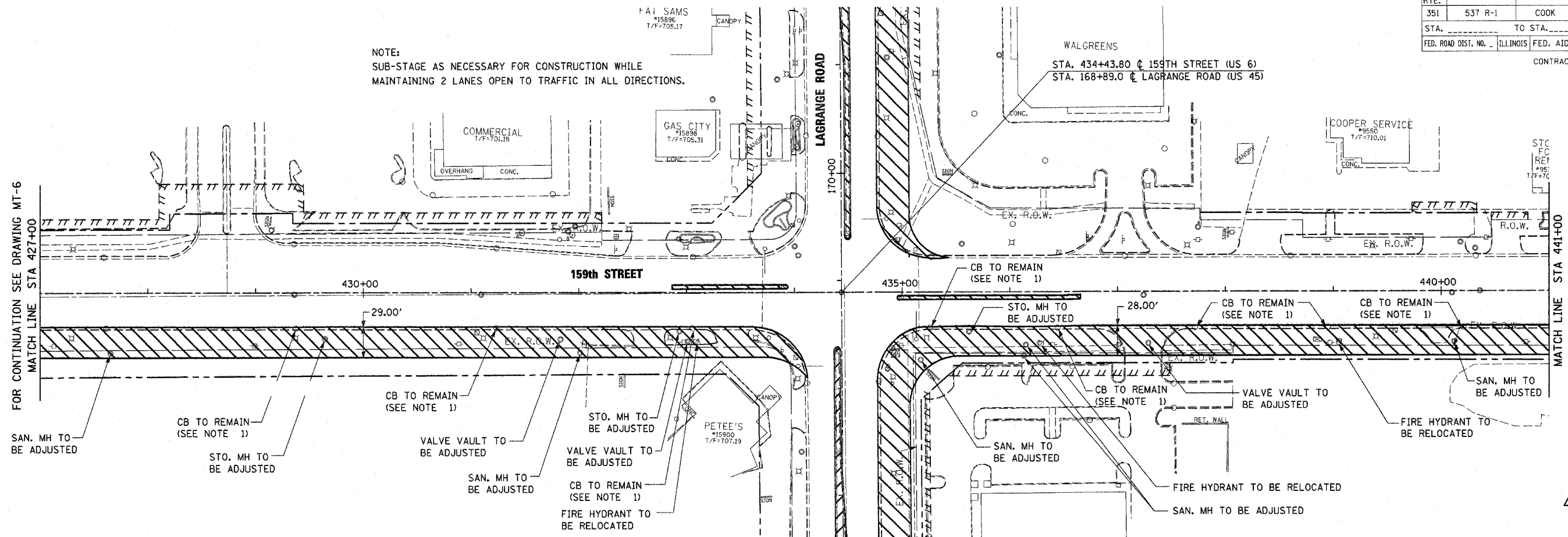
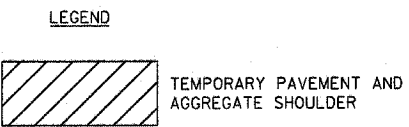


STATE	SECTION	COUNTY	TOTAL SHEETS	SHEET NO.
351	537 R-1	COOK	245	46
STA. _____ TO STA. _____		ILLINOIS FED. AID PROJECT		
FED. ROAD DIST. NO. _____		CONTRACT # 62880		

NOTE:
SUB-STAGE AS NECESSARY FOR CONSTRUCTION WHILE
MAINTAINING 2 LANES OPEN TO TRAFFIC IN ALL DIRECTIONS.



NOTE 1:
THE CONTRACTOR SHALL UTILIZE ALL THE EXISTING CATCH BASINS
LOCATED ON THE EAST EDGE OF LAGRANGE ROAD TO DRAIN THE
TEMPORARY PAVEMENT. THE TEMPORARY PAVEMENT SHALL BE
CONSTRUCTED WITH A MIN. OF 1% SLOPE TOWARDS THESE
CATCH BASINS. SEE SHEET MT-2 FOR TYPICAL SECTIONS.



Rev. 11-1-06

REVISIONS	NAME	DATE

ILLINOIS DEPARTMENT OF TRANSPORTATION
US RTE 6 (159TH ST) AT US RTE 45 (LAGRANGE RD)
MAINTENANCE OF TRAFFIC - PRE-STAGE
U.S. ROUTE 6 (159TH ST.)
STA 427+00 TO 94TH AVE.
SCALE: 1"=50'
DATE: 7-07-06
DRAWN BY: TRK
CHECKED BY: RCH

McDonough Associates Inc.
Engineers / Architects

I:\Dgn\mt01007.sht
10/28/2006
8:14:01 PM