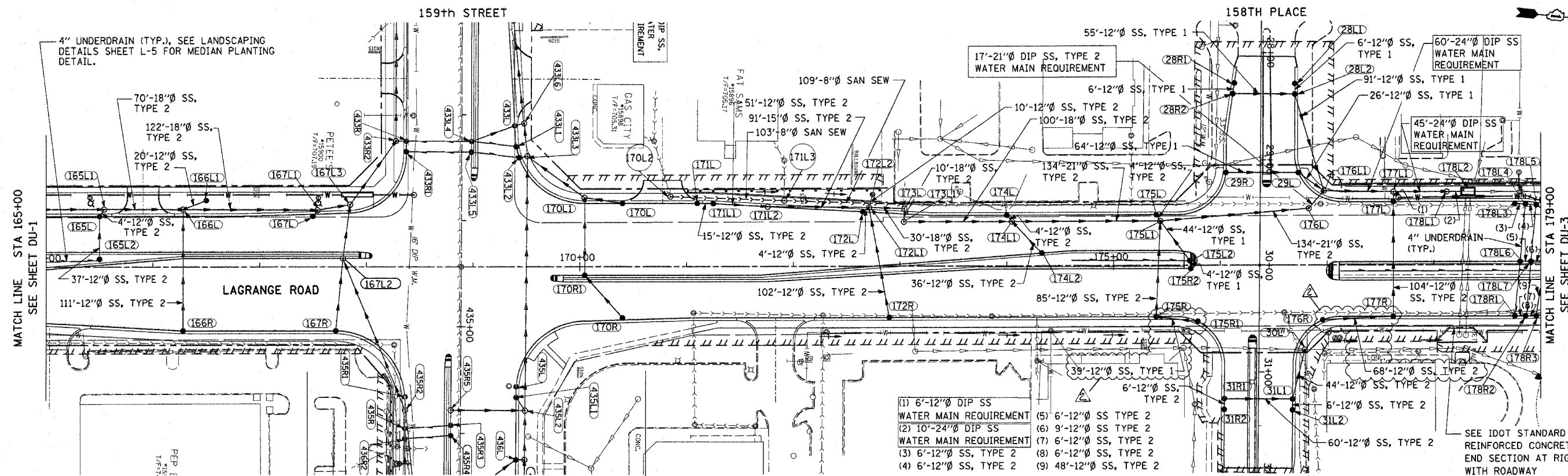
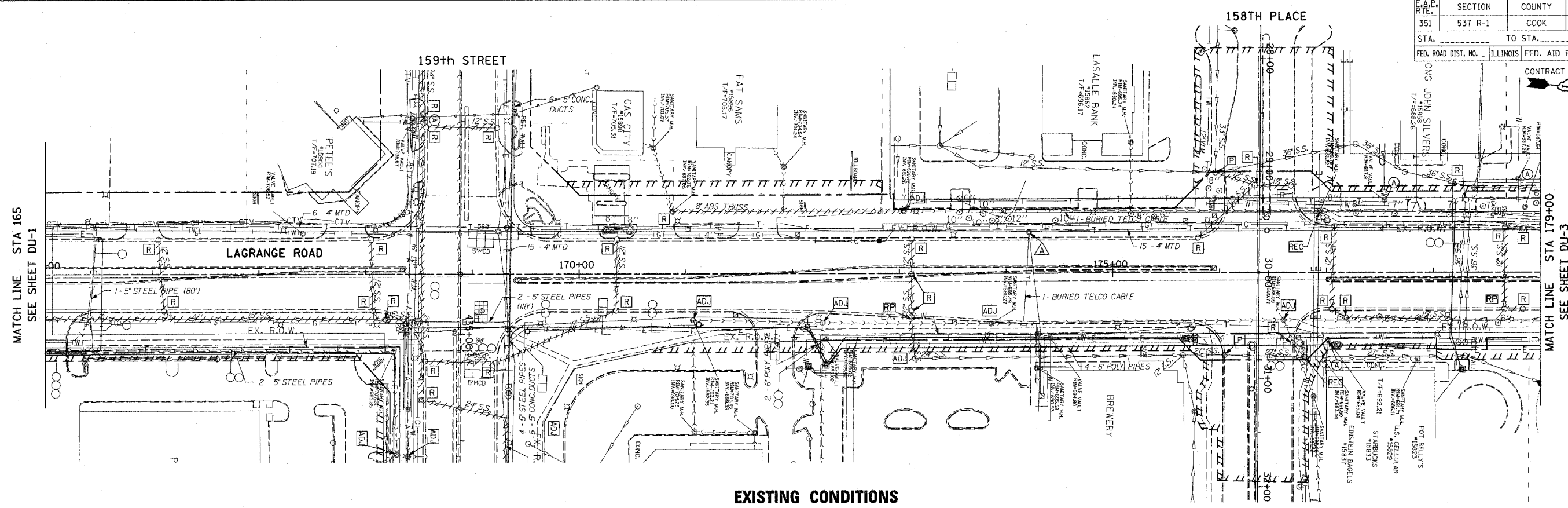


F.A.P. RTE.	SECTION	COUNTY	TOTAL SHEETS	SHEET NO.
351	537 R-1	COOK	245	77
STA.	TO STA.		CONTRACT # 62880	
FED. ROAD DIST. NO.	ILLINOIS	FED. AID PROJECT		



- (1) 6'-12" DIP SS WATER MAIN REQUIREMENT
- (2) 10'-24" DIP SS WATER MAIN REQUIREMENT
- (3) 6'-12" SS, TYPE 2
- (4) 6'-12" SS, TYPE 2
- (5) 6'-12" SS TYPE 2
- (6) 9'-12" SS TYPE 2
- (7) 6'-12" SS, TYPE 2
- (8) 6'-12" SS, TYPE 2
- (9) 48'-12" SS, TYPE 2

- NOTE:**
- SEE DRAWING DU-19 FOR JUNCTION CHAMBER 178L2 DETAILS AND DU-21 FOR RESTRICTOR MANHOLE DETAILS.
  - SEE DRAWING DU-15 TO DU-18 FOR WATER MAIN RELATED ITEMS.

REVISIONS	
NAME	DATE

ILLINOIS DEPARTMENT OF TRANSPORTATION  
 US RTE 6 (159TH ST) AT US RTE 45 (LAGRANGE RD)  
**US RTE 45 (LAGRANGE ROAD)  
 DRAINAGE AND UTILITY PLAN  
 STA 165+00 TO STA 179+00**

SCALE: 1"=50'  
 DATE: 7-07-06

DRAWN BY: OIU  
 CHECKED BY: RCH

**McDonough Associates Inc.**  
 Engineers / Architects

I:\Dp\4\01002.sht  
 10/28/2006  
 8:01:48 PM