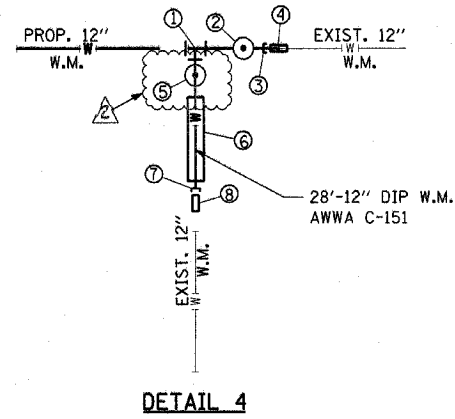


F.A.E. RTE.	SECTION	COUNTY	TOTAL SHEETS	SHEET NO.
351	537 R-1	COOK	245	91
STA. _____ TO STA. _____		FED. ROAD DIST. NO. ILLINOIS FED. AID PROJECT		
CONTRACT # 62880				

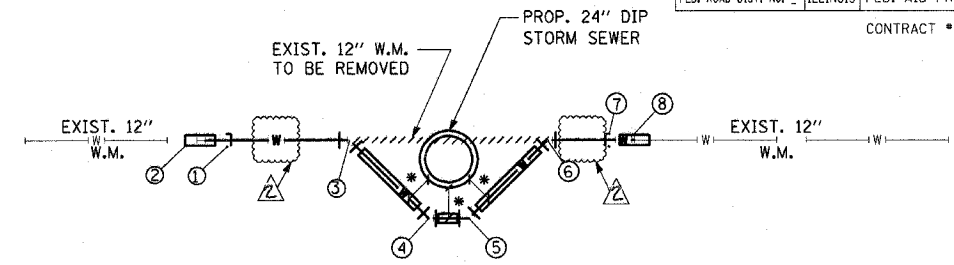
DETAIL 4 NOTES:

1. 12" x 12" x 12" TEE
STA. 179+26.95, 61.52' LT.
2. 12" GATE VALVE (NON-PRESSURE CONNECTION) WITH 5' Ø VAULT
STA. 179+37.32, 61.67' LT.
3. 12" TEMPORARY CAP TO BE INSTALLED AFTER CUTTING THE EXISTING 12" W.M. TEMPORARY CAP TO BE REMOVED AFTER CHLORINATION & TIE INTO EXIST. 12" W.M. WITH:
4. 12"-TRANSITION SLEEVE
STA. 179+43.81, 61.61' LT.
5. 12" GATE VALVE (NON-PRESSURE CONNECTION) WITH 5' Ø VAULT
STA. 179+26.95, 56.55' LT.
6. 4- 12" x 45° VERTICAL BENDS 20'-20" CASING PIPE, WM CROSSING TYPE I, SEE SHEET MD-1 FOR DETAILS.
7. 12" TEMPORARY CAP TO BE INSTALLED AFTER CUTTING THE EXISTING 12" W.M. TEMPORARY CAP TO BE REMOVED AFTER CHLORINATION & TIE INTO EXIST. 12" W.M. WITH:
8. 12"-TRANSITION SLEEVE
STA. 179+27.03, 34.11' LT.



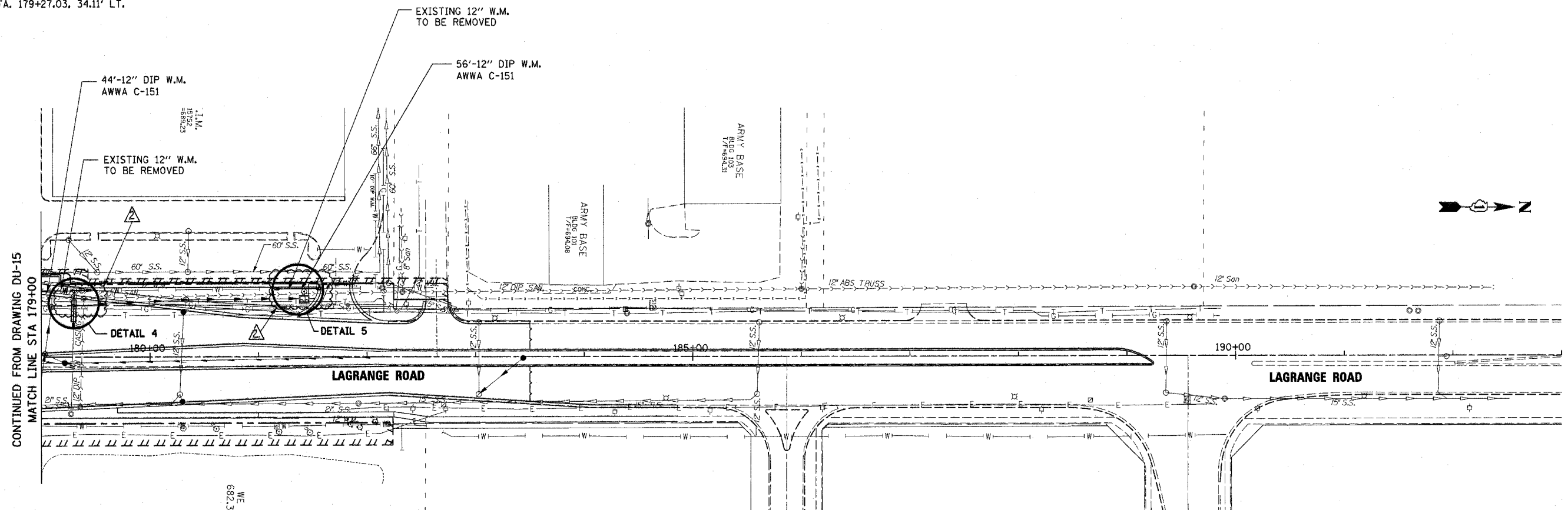
DETAIL 5 NOTES:

1. 12" TEMPORARY CAP TO BE INSTALLED AFTER CUTTING THE EXISTING 12" W.M. TEMPORARY CAP TO BE REMOVED AFTER CHLORINATION & TIE INTO EXIST. 12" W.M. WITH:
2. 12"-TRANSITION SLEEVE
STA. 181+17.04, 63.26' LT.
3. 12" x 45° VERTICAL BEND 12'-20" CASING PIPE
4. 12" x 45° VERTICAL BEND 6'-20" CASING PIPE
5. 12" x 45° VERTICAL BEND 12'-20" CASING PIPE
6. 12" x 45° VERTICAL BEND
7. 12" TEMPORARY CAP TO BE INSTALLED AFTER CUTTING THE EXISTING 12" W.M. TEMPORARY CAP TO BE REMOVED AFTER CHLORINATION & TIE INTO EXIST. 12" W.M. WITH:
8. 12"-TRANSITION SLEEVE
STA. 181+55.46, 63.60' LT.



DETAIL 5

• 18" VERTICAL SEPARATION



WATER MAIN LEGEND AND SYMBOLS

- R STRUCTURE REMOVAL
- A VALVE VAULT TO BE ADJUSTED
- M STRUCTURE TO BE MOVED
- AD STRUCTURE TO BE ADJUSTED

REVISIONS	
NAME	DATE

ILLINOIS DEPARTMENT OF TRANSPORTATION
 US RTE 6 (159TH ST) AT US RTE 45 (LAGRANGE RD)
 LAGRANGE ROAD (US RTE 45)
 WATER MAIN PLAN
 STA 179+00 TO STA 182+19.46
 SCALE: 1"=50'
 DATE: 7-07-06
 DRAWN BY: JTF
 CHECKED BY: OIU
McDonough Associates Inc.
 Engineers / Architects

I:\Dgn\du01016.sht
 10/28/2006
 8:11:54 PM

Rev. 11-1-06