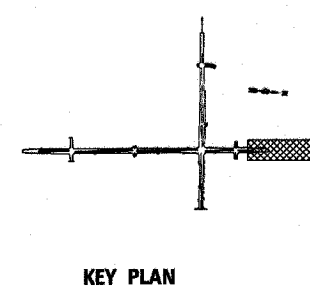


2

- NOTES:**
- SEE DRAWING RL-1 FOR LIGHTING PHASING NOTES.
 - TEMPORARY LIGHTING UNITS SHALL BE FURNISHED, INSTALLED AND ENERGIZED PRIOR TO THE COMMENCEMENT OF STAGE 1 WORK.
 - TEMPORARY LIGHTING WILL REMAIN IN SERVICE UNTIL PROPOSED (PERMANENT) LIGHTING IS INSTALLED, ENERGIZED, TESTED AND APPROVED BY THE ENGINEER.
 - FOR TEMPORARY LIGHTING DETAILS, SEE DRAWING ED-7.
 - TEMPORARY WOOD POLE, 100 FT., CLASS 4, 15 FT. MAST ARM WITH LUMINAIRE, SODIUM VAPOR, HIGH MAST, HORIZONTAL MOUNT, 750 WATT, 80 FT. MOUNTING HEIGHT AND 20° TILTED FROM VERTICAL TOWARD ROADWAY. FOR TEMPORARY LIGHTING DETAILS, SEE DRAWING ED-7.
 - EXISTING LIGHT POLE FOUNDATION SHALL BE REMOVED IN ACCORDANCE WITH IDOT STANDARD SPECIFICATIONS.



0' 25' 50' 100'
SCALE: 1" = 50'

Rev. 11-1-06

REVISIONS	
NAME	DATE

ILLINOIS DEPARTMENT OF TRANSPORTATION
US RTE 6 (159TH ST) AT US RTE 45 (LAGRANGE RD)
LAGRANGE ROAD (US45)
TEMPORARY LIGHTING AND REMOVAL PLAN
STA 179+00 TO STA 182+19.6
SCALE: 1" = 50'
DATE: 7-07-06
DRAWN BY: MB
CHECKED BY: KMY

McDonough Associates Inc.
Engineers / Architects

S:\Blec\CADD\RL-3.dgn
 10/28/2006
 7:44:26 PM