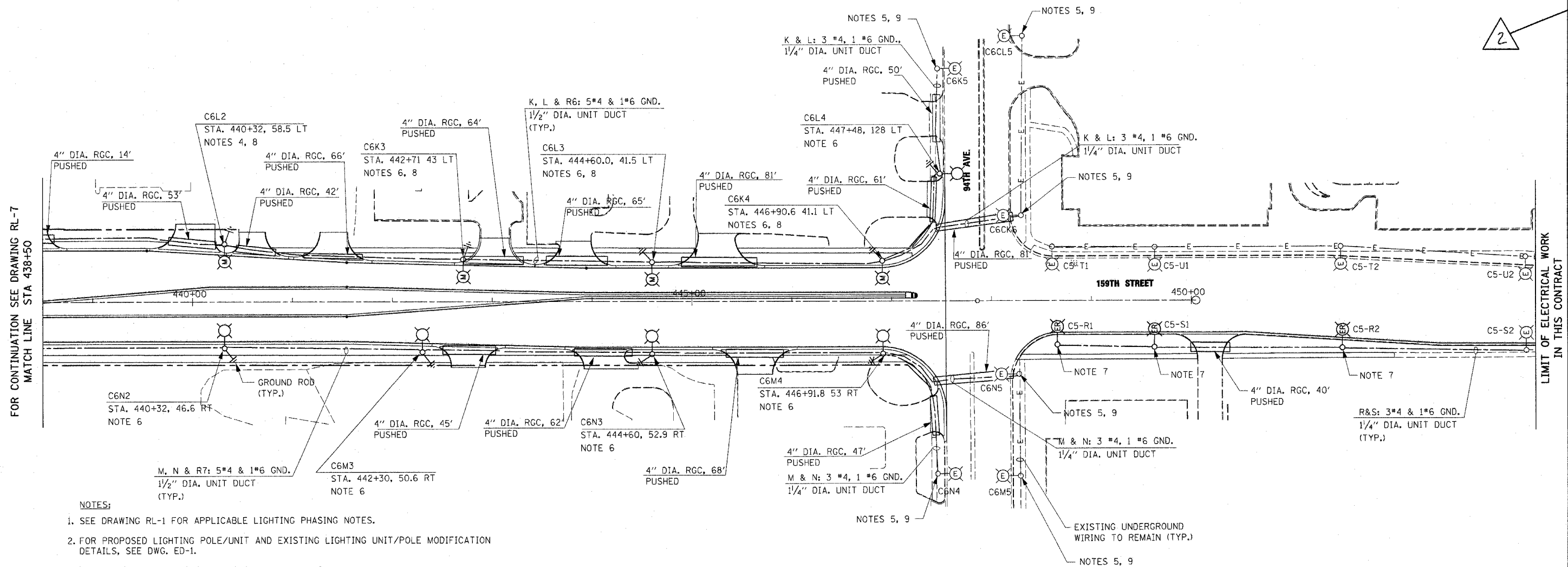




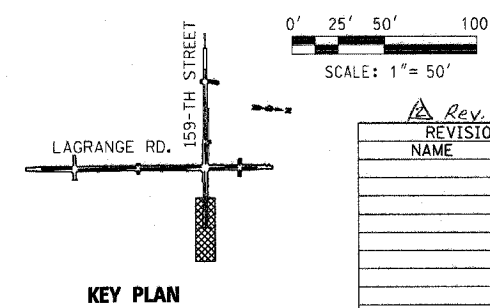
2



FOR CONTINUATION SEE DRAWING RL-7  
MATCH LINE STA 438+50

LIMIT OF ELECTRICAL WORK  
IN THIS CONTRACT

- NOTES:**
- SEE DRAWING RL-1 FOR APPLICABLE LIGHTING PHASING NOTES.
  - FOR PROPOSED LIGHTING POLE/UNIT AND EXISTING LIGHTING UNIT/POLE MODIFICATION DETAILS, SEE DWG. ED-1.
  - FOR LIGHT POLE FOUNDATION DETAILS, SEE DWG. ED-4.
  - INSTALL LIGHT POLE FOUNDATION ON THE BACK SIDE OF SIDEWALK.
  - REVISE LIGHT POLE/UNIT IDENTIFICATION AS SHOWN ON THIS PLAN. THE COST OF THIS WORK SHALL BE INCLUDED IN THE "UNIT DUCT" PAY ITEM. NO SEPARATE PAYMENT WILL BE MADE.
  - THE ROADSIDE FACE OF THE LIGHT POLE FOUNDATION SHALL BE SET 2'-0" FROM THE BACK OF CURB.
  - REINSTALL EXISTING LIGHTING UNIT ON A NEW FOUNDATION AFTER TEMPORARY PAVEMENT HAS BEEN REMOVED.
  - INSTALL PREVIOUSLY REMOVED EXISTING LIGHTING UNIT ON A NEW FOUNDATION. THE CONTRACTOR SHALL REPLACE EXISTING 12'-0" MAST ARM WITH 15'-0" MAST ARM PRIOR TO THE INSTALLATION OF EXISTING LIGHTING UNIT ON A NEW FOUNDATION. THE COST OF THIS WORK SHALL BE INCLUDED IN THE COST OF "MODIFY EXISTING LIGHT POLE, ALUMINUM 47.5 FT M.H., WITH NEW 15 FT MAST ARM AND 20A, 120V, GFI RECEPTACLE" PAY ITEM. NO SEPARATE PAYMENT WILL BE MADE.
  - REWORK EXISTING UNDERGROUND WIRING AS REQUIRED TO CONNECT THE EXISTING LIGHTING UNIT TO PROPOSED LIGHTING CONTROLLER "C6". THE COST OF THIS WORK SHALL BE INCLUDED IN THE COST OF APPLICABLE UNIT DUCT PAY ITEM. NO SEPARATE PAYMENT WILL BE MADE.



Rev. 11-1-06

REVISIONS	
NAME	DATE

**RL-10**

ILLINOIS DEPARTMENT OF TRANSPORTATION  
US RTE 6 (159TH ST) AT US RTE 45 (LAGRANGE RD)  
**159TH STREET (US RTE 6)  
PROPOSED LIGHTING PLAN  
STA 438+50 TO 94TH AVE.**

SCALE: 1" = 50'  
DATE: 7-07-06

DRAWN BY: MB  
CHECKED BY: KMY

**McDonough Associates Inc.**  
Engineers / Architects

I:\Elec\CADD\RL-10.dgn  
10/28/2006  
7:40:50 PM