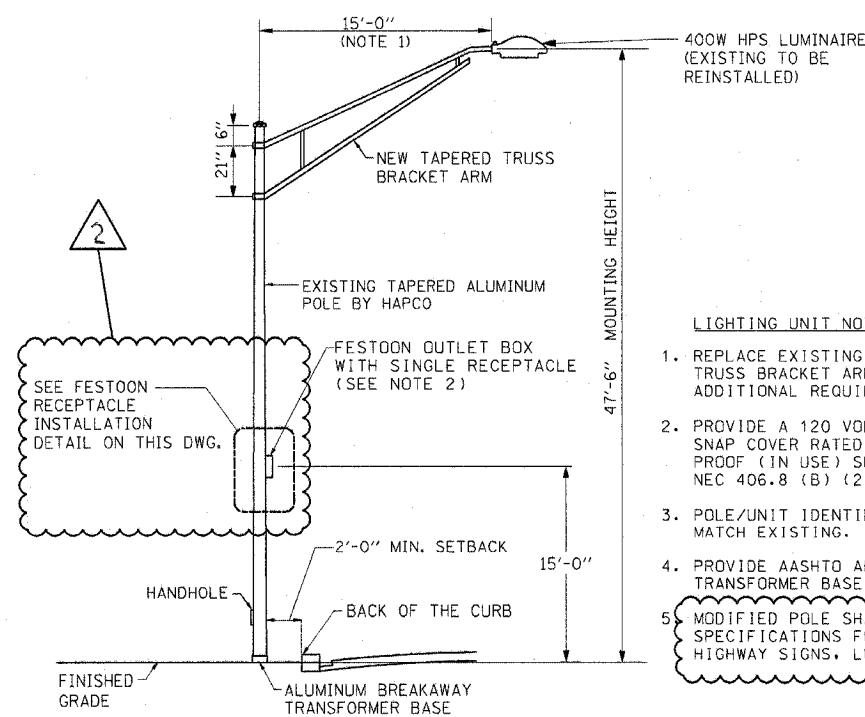


PROPOSED LIGHTING POLE UNIT DETAIL

N.T.S.

LIGHTING UNIT NOTES:

- POLE DESIGN SHALL CONFORM WITH A.A.S.H.T.O. 1985 OR LATEST "STANDARD SPECIFICATIONS FOR STRUCTURAL SUPPORTS FOR HIGHWAY SIGNS, LUMINAIRES AND TRAFFIC SIGNALS" FOR 80 M.P.H. WIND SPEED AND THE VILLAGE OF ORLAND PARK SECTION 6-407 REQUIREMENTS.
- PROVIDE A 120 VOLT, 20 AMP RECEPTACLE ICE AND SNAP COVER RATED FOR WATER TIGHT AND WEATHER PROOF (IN USE) SERVICE, IN ACCORDANCE WITH NEC 406.8 (B) (2) (c).
- POLE/UNIT IDENTIFICATION MOUNTING HEIGHT SHALL MATCH EXISTING. THE CONTRACTOR SHALL VERIFY THE MOUNTING HEIGHT IN THE FIELD.
- PROVIDE AASHTO APPROVED ALUMINUM BREAKAWAY TRANSFORMER BASE.
- THE COMPLETE LIGHT STANDARD SHALL BE IDENTICAL TO THE TYPE MANUFACTURED BY THE HAPCO COMPANY TO MATCH THE EXISTING LIGHTING UNITS.

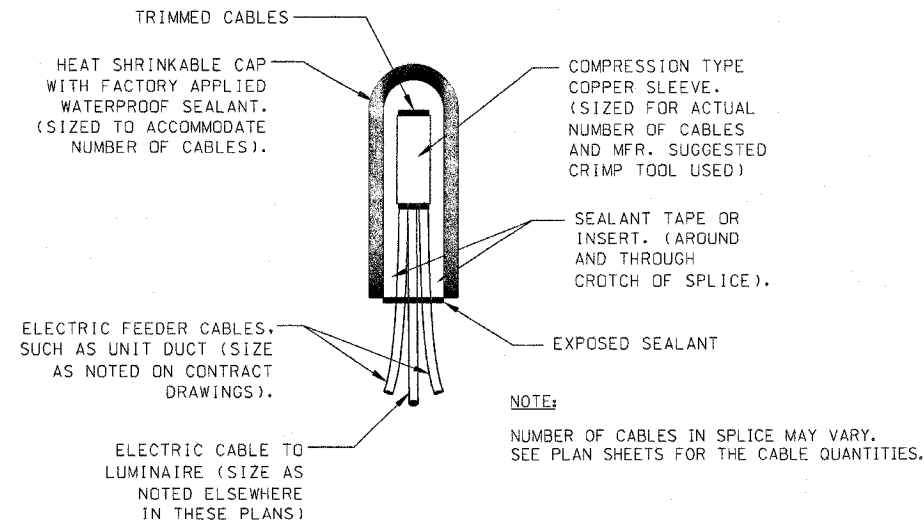


EXISTING LIGHTING POLE UNIT MODIFICATION DETAIL

N.T.S.

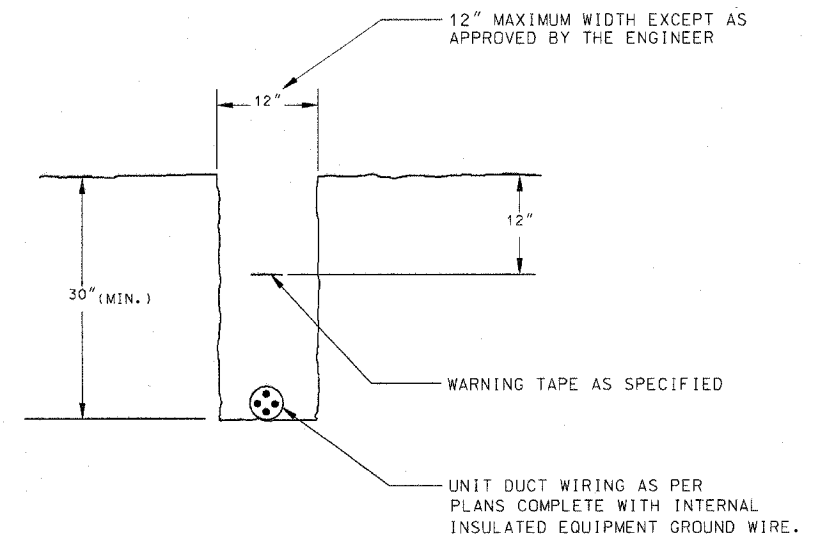
LIGHTING UNIT NOTES:

- REPLACE EXISTING 12 FT. MAST ARM WITH TAPERED TRUSS BRACKET ARM. SEE SPECIAL PROVISIONS FOR ADDITIONAL REQUIREMENTS.
- PROVIDE A 120 VOLT, 20 AMP RECEPTACLE ICE AND SNAP COVER RATED FOR WATER TIGHT AND WEATHER-PROOF (IN USE) SERVICE, IN ACCORDANCE WITH NEC 406.8 (B) (2) (c).
- POLE/UNIT IDENTIFICATION MOUNTING HEIGHT SHALL MATCH EXISTING.
- PROVIDE AASHTO APPROVED ALUMINUM BREAKAWAY TRANSFORMER BASE.
- MODIFIED POLE SHALL CONFORM TO "AASHTO STANDARD SPECIFICATIONS FOR STRUCTURAL SUPPORTS FOR HIGHWAY SIGNS, LUMINAIRES AND TRAFFIC SIGNALS."



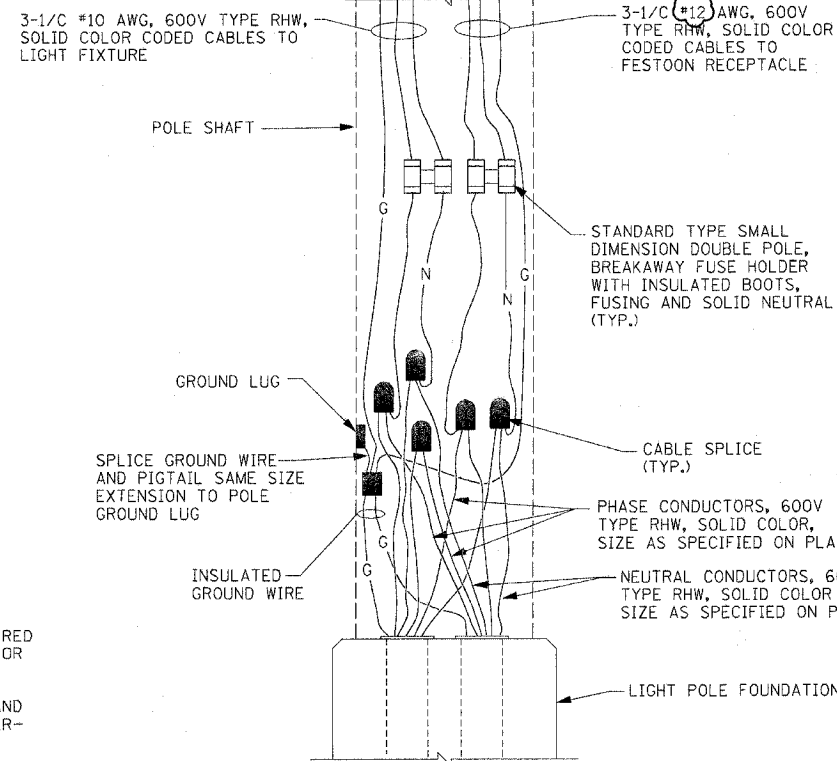
TYPICAL SPLICE DETAIL

NOTE:
NUMBER OF CABLES IN SPLICE MAY VARY. SEE PLAN SHEETS FOR THE CABLE QUANTITIES.



TYPICAL WIRING IN TRENCH - DETAIL

N.T.S.

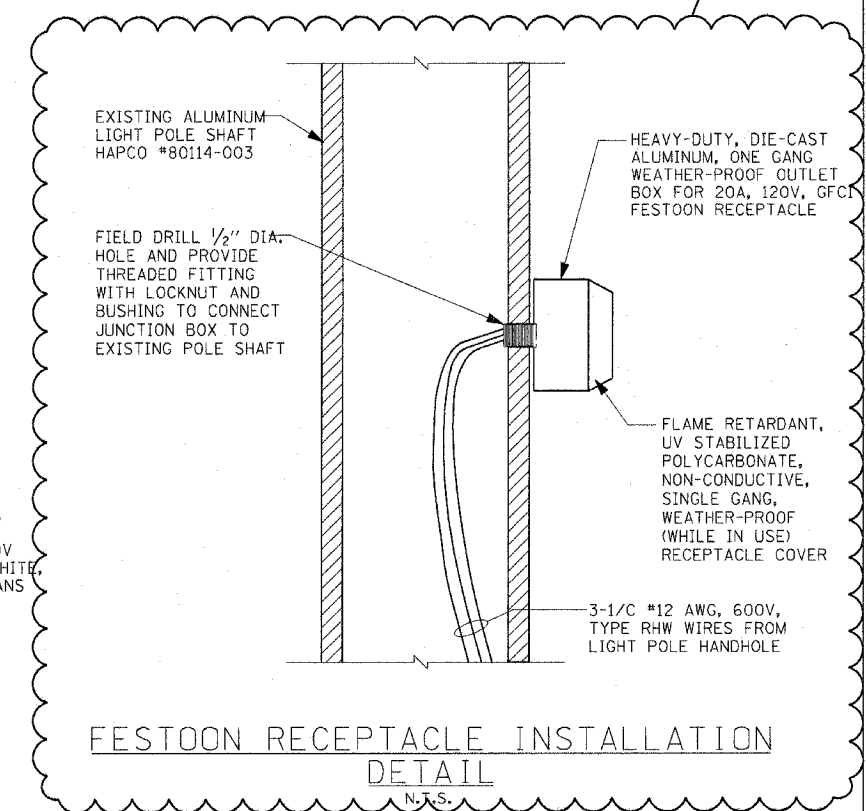


POLE BASE WIRING DIAGRAM

N.T.S.

NOTES:

- FUSES SHALL BE OF THE TIME DELAY TYPE (SEE SPECS.).
- FOR AN END POLE, CAP AND SEAL THE UNUSED ELBOW.
- CABLE/WIRE COLOR CODING:
BLACK - PHASE CONDUCTOR
RED - PHASE CONDUCTOR
WHITE - NEUTRAL CONDUCTOR
GREEN - GROUND CONDUCTOR



FESTOON RECEPTACLE INSTALLATION DETAIL

N.T.S.

ED-1

REVISIONS	
NAME	DATE

ILLINOIS DEPARTMENT OF TRANSPORTATION
US RTE 6 (159TH ST) AT US RTE 45 (LAGRANGE RD)

POLE AND WIRING DETAILS

SCALE: NONE
DATE: 7-07-06

DRAWN BY: MB
CHECKED BY: KMY

McDonough Associates Inc.
Engineers / Architects