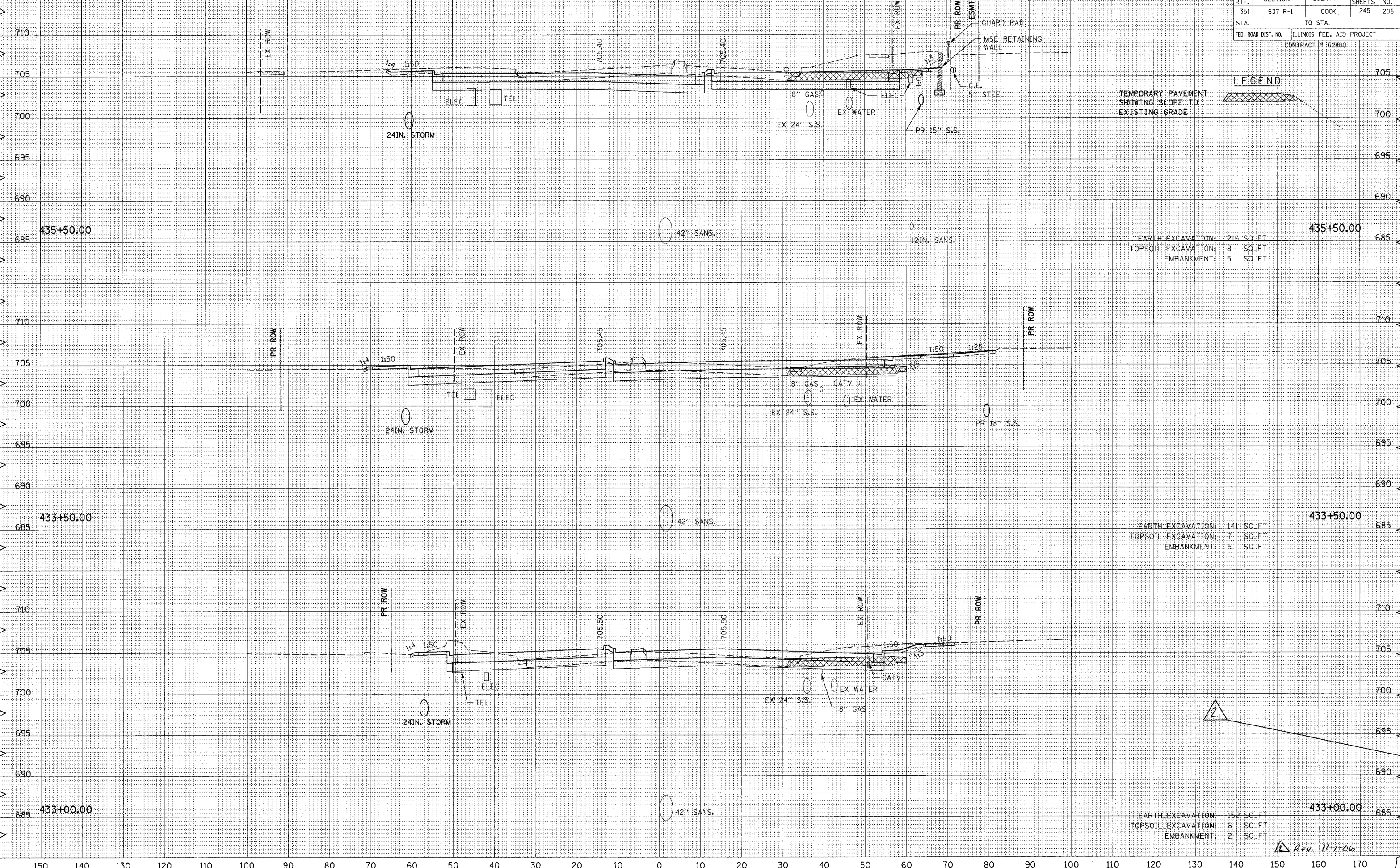


150 140 130 120 110 100 90 80 70 60 50 40 30 20 10 0 10 20 30 40 50 60 70 80 90 100 110 120 130 140 150 160 170

DATE	SECTION	COUNTY	TOTAL SHEETS	SHEET NO.
	537 R-1	COOK	245	205
STA.	TO STA.			
FED. ROAD DIST. NO.	ILLINOIS	FED. AID PROJECT	CONTRACT # 62880	

DATE
BY
FINAL SURVEY
QUANTITY PLOTTED
TEMPLATE
NOTE BOOK
AREAS CHECKED
NO.

DATE
BY
ORIGINAL SURVEY
QUANTITY PLOTTED
TEMPLATE
NOTE BOOK
AREAS CHECKED
NO.



TEMPORARY PAVEMENT
SHOWING SCOPE TO
EXISTING GRADE

LEGEND

EARTH EXCAVATION: 216 SQ. FT.
TOPSOIL EXCAVATION: 8 SQ. FT.
EMBANKMENT: 5 SQ. FT.

EARTH EXCAVATION: 141 SQ. FT.
TOPSOIL EXCAVATION: 7 SQ. FT.
EMBANKMENT: 5 SQ. FT.

EARTH EXCAVATION: 152 SQ. FT.
TOPSOIL EXCAVATION: 6 SQ. FT.
EMBANKMENT: 2 SQ. FT.

Rev. 11-1-06

150 140 130 120 110 100 90 80 70 60 50 40 30 20 10 0 10 20 30 40 50 60 70 80 90 100 110 120 130 140 150 160 170