

STATE OF ILLINOIS
DEPARTMENT OF TRANSPORTATION
DIVISION OF HIGHWAYS

PROPOSED
HIGHWAY PLANS

FAP 351 (US 6)
SECTION 537 R-1
U.S. 45 (96TH AVE /LAGRANGE ROAD) TO 94TH AVE
INTERSECTION RECONSTRUCTION
COOK COUNTY
C-91-068-05

F.A.P. RTE.	SECTION	COUNTY	TOTAL SHEETS	SHEET NO.
351	537 R-1	COOK	243	1

CONTRACT # 62880
D-91-068-05

FOR INDEX OF SHEETS, SEE SHEET NO. 2

DESIGN DESIGNATION:
3125(20) MAJOR ARTERIAL 15.73 (JRCP20)
US RTE 45 ADT: = 42,000(2000); 54,286(2030)
US RTE 6 ADT: = 44,000(2000); 54,286(2030)

DESIGN SPEED:
US RTE 45 = 45 MPH
US RTE 6 = 45 MPH



LOCATION OF SECTION INDICATED THUS: - [black rectangle] -

SEAL

COMPANY:
McDONOUGH ASSOCIATES, INC.
130 EAST RANDOLPH SUITE 1000

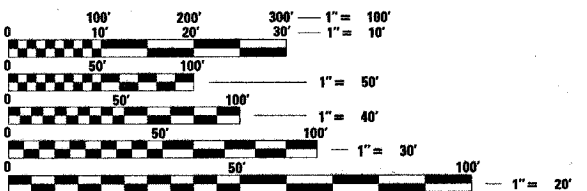
SIGNATURE
NAME: ALAN R. SWANSON
EXP. 11/30/2007
SHEETS: 1-158, 181-246

COMPANY:
McDONOUGH ASSOCIATES, INC.
130 EAST RANDOLPH SUITE 1000

SIGNATURE
KAMIL M. YENICE
EXP. 11/30/2007
SHEETS: 159-180

LENGTH OF PROJECT

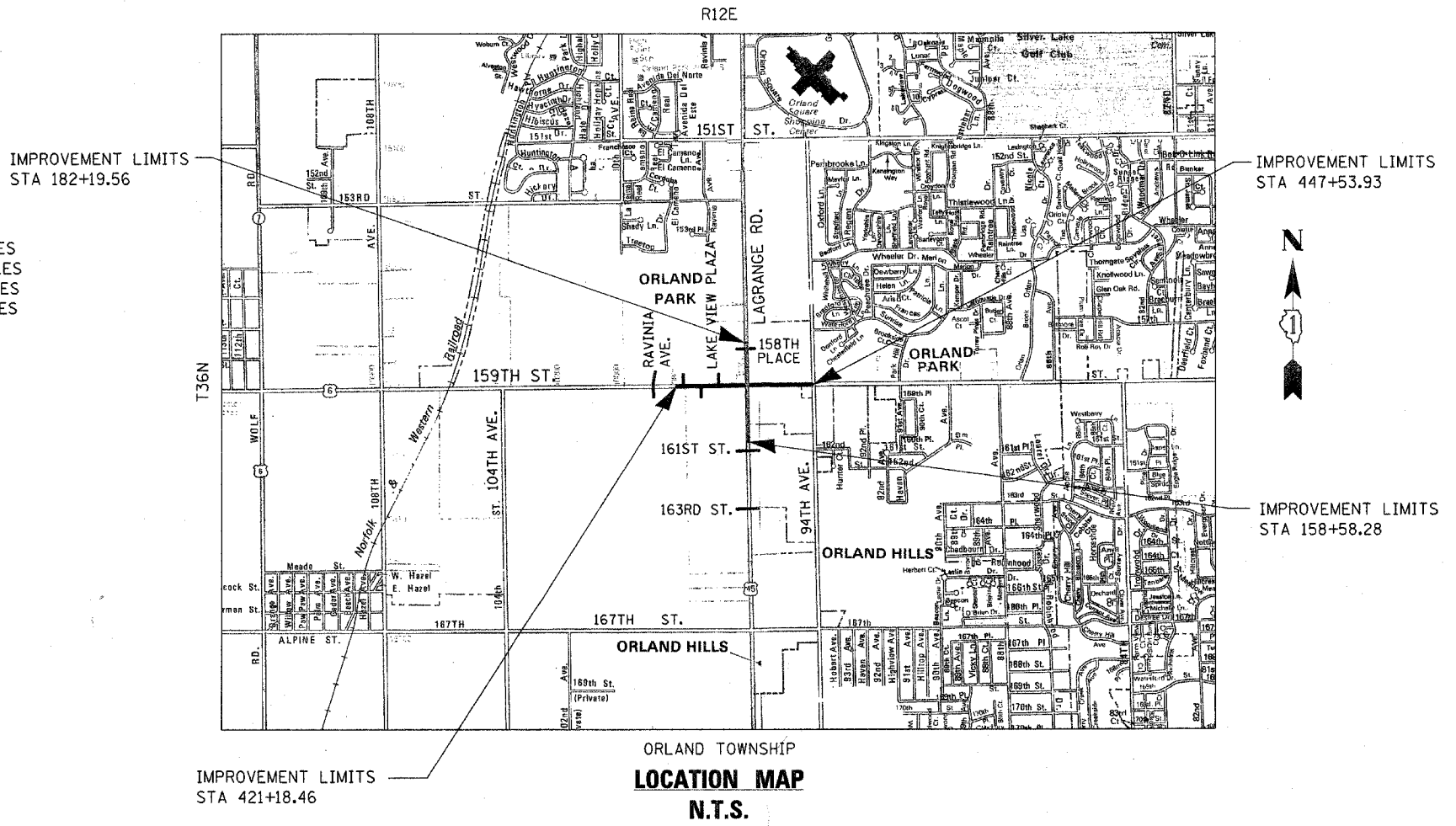
US RTE 45 (LAGRANGE RD.) = 2,361.28 FT = 0.45 MILES
US RTE 6 (159TH ST.) = 2,635.47 FT = 0.50 MILES
GROSS LENGTH = 4,996.75 FT = 0.95 MILES
NET LENGTH = 4,996.75 FT = 0.95 MILES



FULL SIZE PLANS HAVE BEEN PREPARED USING STANDARD ENGINEERING SCALES. REDUCED SIZED PLANS WILL NOT CONFORM TO STANDARD SCALES. IN MAKING MEASUREMENTS ON REDUCED PLANS, THE ABOVE SCALES MAY BE USED.

J.U.L.I.E.
JOINT UTILITY LOCATION INFORMATION FOR EXCAVATION
1-800-892-0123

CONTRACT NO. 62880



STATE OF ILLINOIS
DEPARTMENT OF TRANSPORTATION
DIVISION OF HIGHWAYS

SUBMITTED June 28 20 06

Diane M. O'Keefe
DEPUTY DIRECTOR OF HIGHWAYS, REGION ENGINEER

August 18, 20 06
Mike Nune
ENGINEER OF DESIGN AND ENVIRONMENT

August 18, 20 06
Milton R. Suss
DIRECTOR, DIVISION OF HIGHWAYS

PRINTED BY THE AUTHORITY
OF THE STATE OF ILLINOIS

DISTRICT ONE - IDOT CONSULTANT PROJECT MANAGER: KEN ENG (847) 705-4247 - SCHAUMBURG, IL.