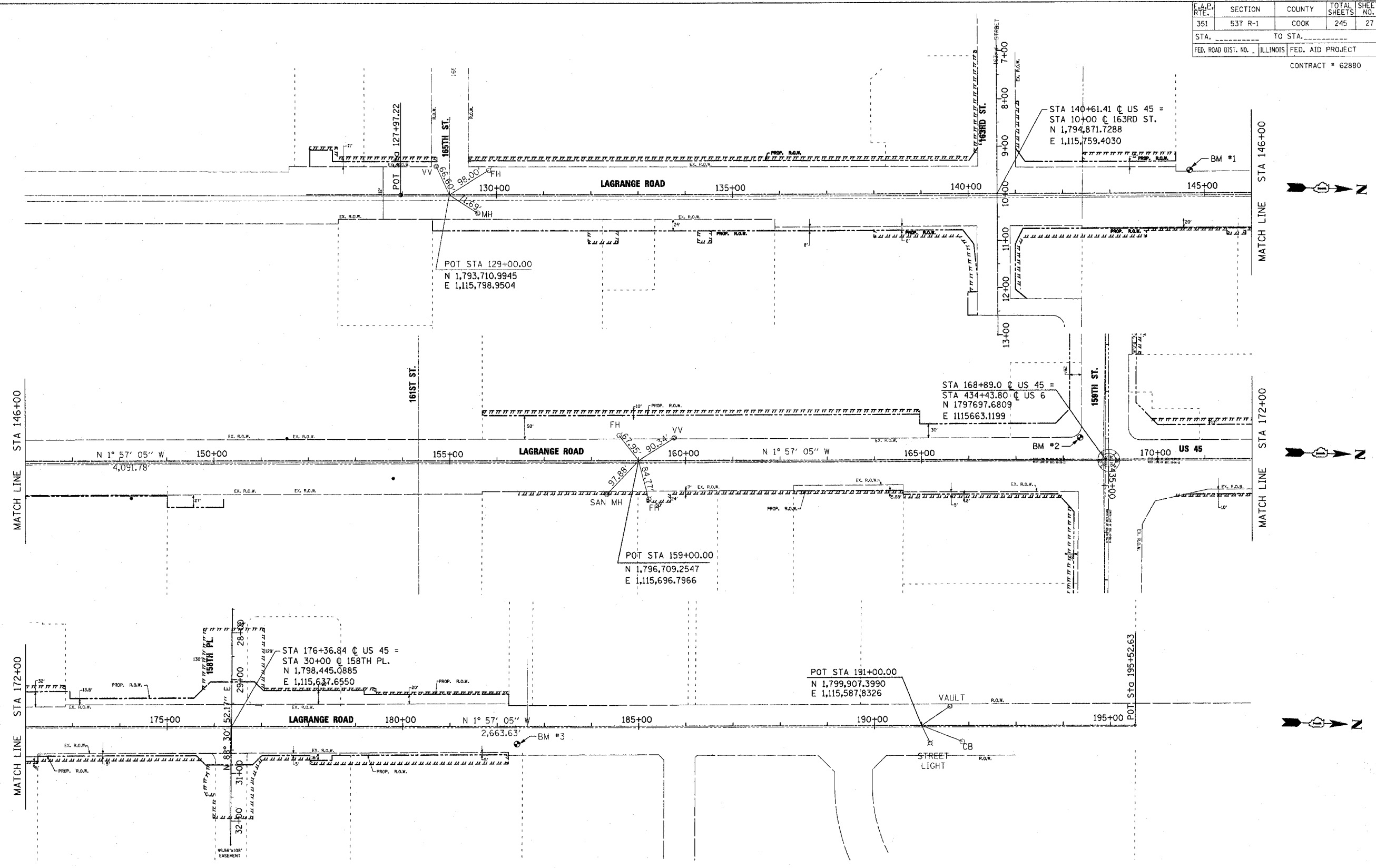


EX. RTE.	SECTION	COUNTY	TOTAL SHEETS	SHEET NO.
351	537 R-1	COOK	245	27

STA. \_\_\_\_\_ TO STA. \_\_\_\_\_  
 FED. ROAD DIST. NO. ILLINOIS FED. AID PROJECT

CONTRACT # 62880



**CONTROL POINTS/BENCHMARKS:**

- |  |  |  |
|--|--|--|
| BM #1: APPROXIMATE STA. 144+69±<br>IRON ROD CONTROL POINT<br>ELEVATION = 724.04<br>NORTHING = 1795277.7258<br>EASTING = 1115697.0532 | BM #2: APPROXIMATE STA. 168+36±<br>IRON ROD CONTROL POINT<br>ELEVATION = 705.63<br>NORTHING = 1797643.1628<br>EASTING = 1115617.9719 | BM #3: APPROXIMATE STA. 182+42±<br>IRON ROD CONTROL POINT<br>ELEVATION = 691.39<br>NORTHING = 1799051.5103<br>EASTING = 1115655.1625 |
|--|--|--|

REVISIONS	
NAME	DATE

ILLINOIS DEPARTMENT OF TRANSPORTATION  
 US RTE 6 (159TH ST) AT US RTE 45 (LAGRANGE RD)  
 US RTE 45 (LAGRANGE ROAD)  
 ALIGNMENT TIES & BENCHMARKS  
 STA. 127+97.22 TO STA 195+52.63  
 SCALE: 1"=100' DRAWN BY: JTF  
 DATE: 7-07-06 CHECKED BY: RCH



FILES  
 SDATES  
 STIMES