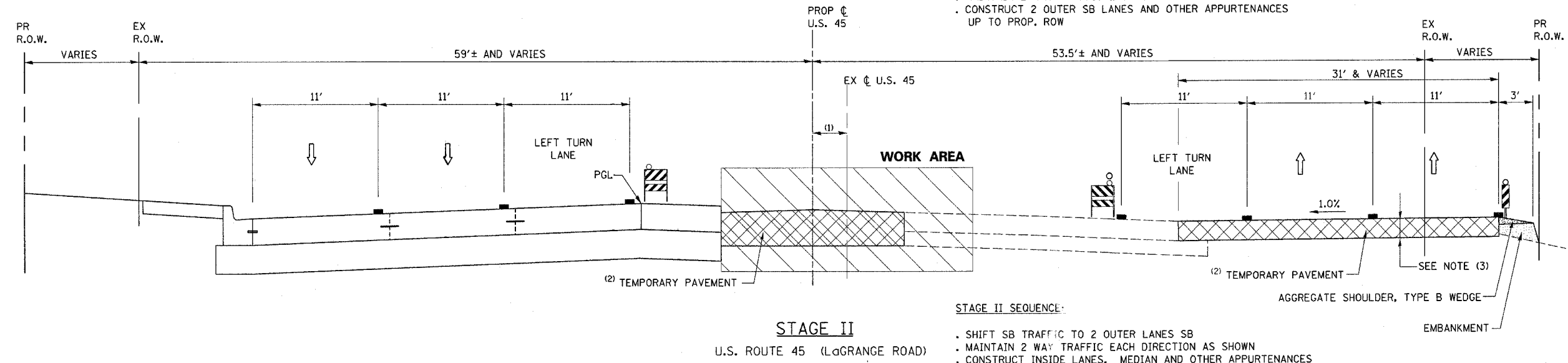
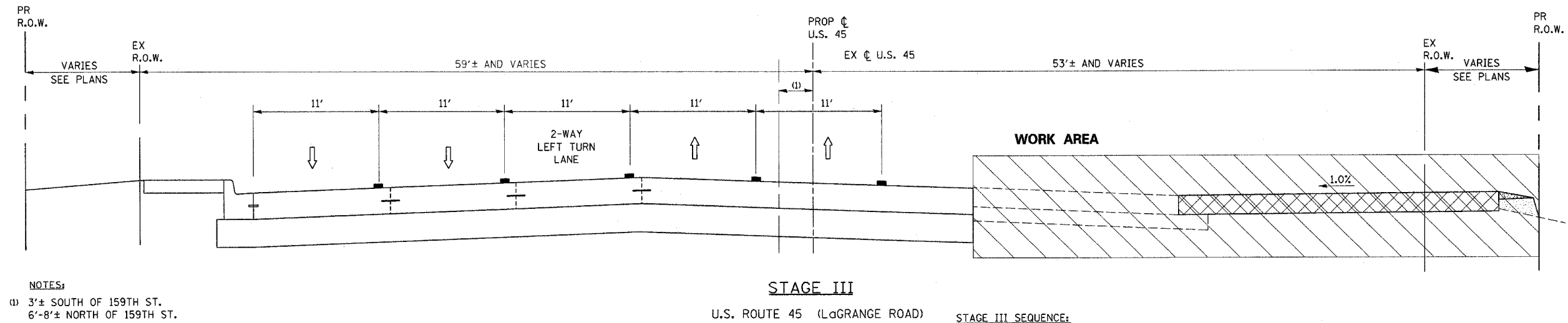


- STAGE I SEQUENCE:**
- REMOVE EXISTING MEDIAN AND CONSTRUCT TEMPORARY PAVEMENT. (2)
 - SHIFT SB TRAFFIC TO EXIST. NB LANES
 - SHIFT NB LANES TO TEMPORARY PAVEMENT
 - MAINTAIN 2 WAY TRAFFIC EACH DIRECTION AS SHOWN
 - CONSTRUCT 2 OUTER SB LANES AND OTHER APPURTENANCES UP TO PROP. ROW



- STAGE II SEQUENCE:**
- SHIFT SB TRAFFIC TO 2 OUTER LANES SB
 - MAINTAIN 2 WAY TRAFFIC EACH DIRECTION AS SHOWN
 - CONSTRUCT INSIDE LANES, MEDIAN AND OTHER APPURTENANCES



- STAGE III SEQUENCE:**
- SHIFT TRAFFIC TO NEWLY CONSTRUCTED PAVEMENT AS SHOWN
 - MAINTAIN 2 WAY TRAFFIC EACH DIRECTION AS SHOWN
 - CONSTRUCT NB LANES AND OTHER APPURTENANCES UP TO PROP. ROW

- NOTES:**
- 3'± SOUTH OF 159TH ST.
6'-8'± NORTH OF 159TH ST.
 - CONSTRUCT TEMPORARY PAVEMENT DURING PRE-STAGE (SEE MT-4 - MT-7)
 - BITUMINOUS BASE COURSE, SUPER PAVE 8" BITUMINOUS CONCRETE SURFACE COURSE, SUPER PAVE, N50, MIX "D", 2" (SEE CHART)

SUPERPAVE MIX DESIGN

TEMPORARY PAVEMENT			
MIX TYPE	MAX RAP %	VOIDS	AC TYPE
BITUMINOUS BASE COURSE, SUPER PAVE, 8"	50	2% @ 50 Gyr.	PG 58-22
BITUMINOUS CONCRETE SURFACE COURSE, SUPERPAVE, MIX "D", N50 2"	15	4% @ 50 Gyr.	PG 64-22

REVISIONS	
NAME	DATE

ILLINOIS DEPARTMENT OF TRANSPORTATION
 US RTE 6 (159TH ST) AT US RTE 45 (LAGRANGE RD)
MAINTENANCE OF TRAFFIC
TYPICAL SECTION
U.S. 45 (LAGRANGE ROAD)
 SCALE: N/A
 DATE: 7-07-06
 DRAWN BY: TRK
 CHECKED BY: RCH
McDonough Associates Inc.
 Engineers / Architects

I:\Data\101002.sht
 7/7/2006 12:08:58 PM