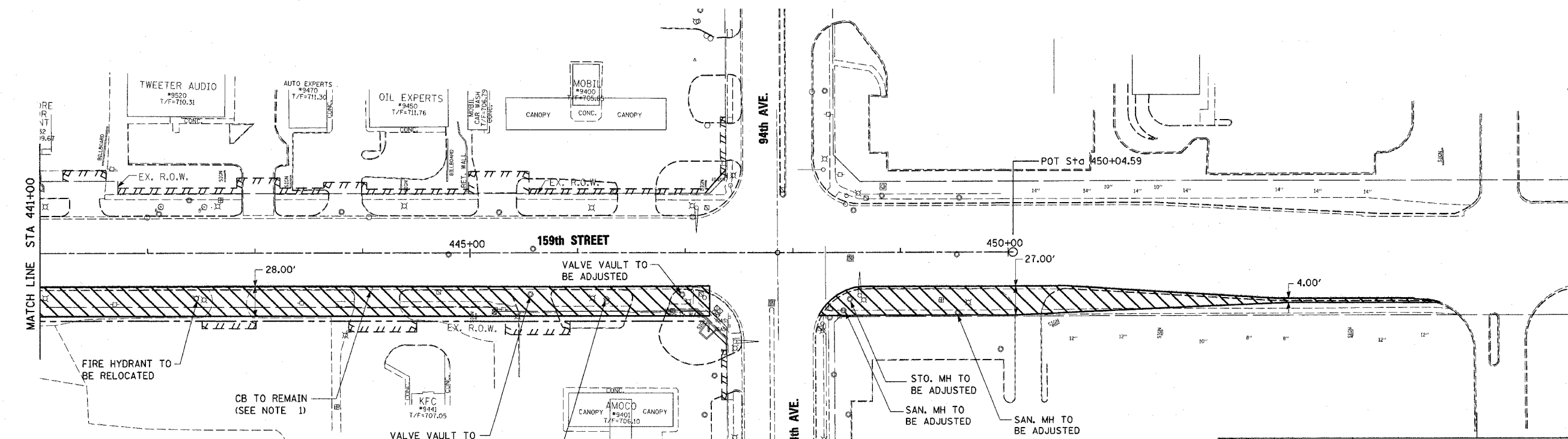
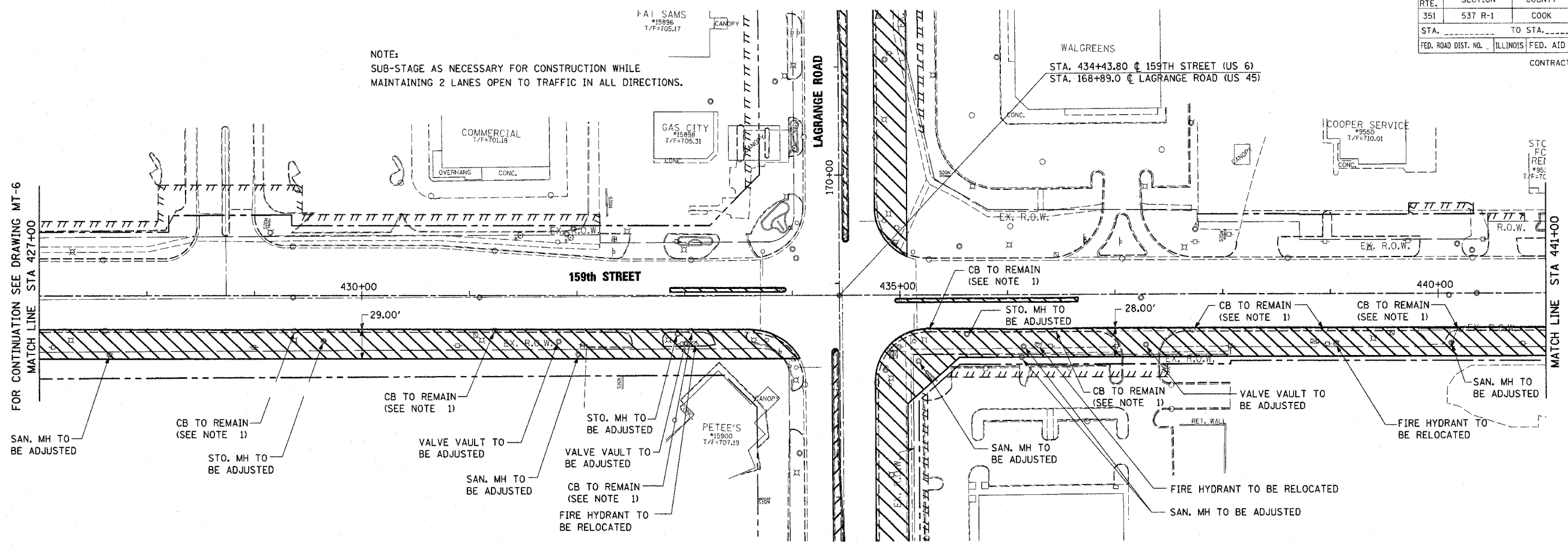


F.A.P. RITE.	SECTION	COUNTY	TOTAL SHEETS	SHEET NO.
351	537 R-1	COOK	245	46
STA. _____ TO STA. _____		ILLINOIS FED. AID PROJECT		
FED. ROAD DIST. NO. _____		CONTRACT # 62880		



NOTE 1:  
 THE CONTRACTOR SHALL UTILIZE ALL THE EXISTING CATCH BASINS LOCATED ON THE EAST EDGE OF LAGRANGE ROAD TO DRAIN THE TEMPORARY PAVEMENT. THE TEMPORARY PAVEMENT SHALL BE CONSTRUCTED WITH A MIN. OF 1% SLOPE TOWARDS THESE CATCH BASINS. SEE SHEET MT-2 FOR TYPICAL SECTIONS.

**LEGEND**

TEMPORARY PAVEMENT AND AGGREGATE SHOULDER

SEE MT-1 FOR MOT SYMBOLS LEGEND

REVISIONS	
NAME	DATE

ILLINOIS DEPARTMENT OF TRANSPORTATION  
 US RTE 6 (159TH ST) AT US RTE 45 (LAGRANGE RD)  
 MAINTENANCE OF TRAFFIC - PRE-STAGE  
 U.S. ROUTE 6 (159TH ST.)  
 STA 427+00 TO 94TH AVE.  
 SCALE: 1"=50'  
 DATE: 7-07-06  
 DRAWN BY: TRK  
 CHECKED BY: RCH

**McDonough Associates Inc.**  
 Engineers / Architects