
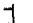



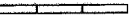
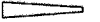
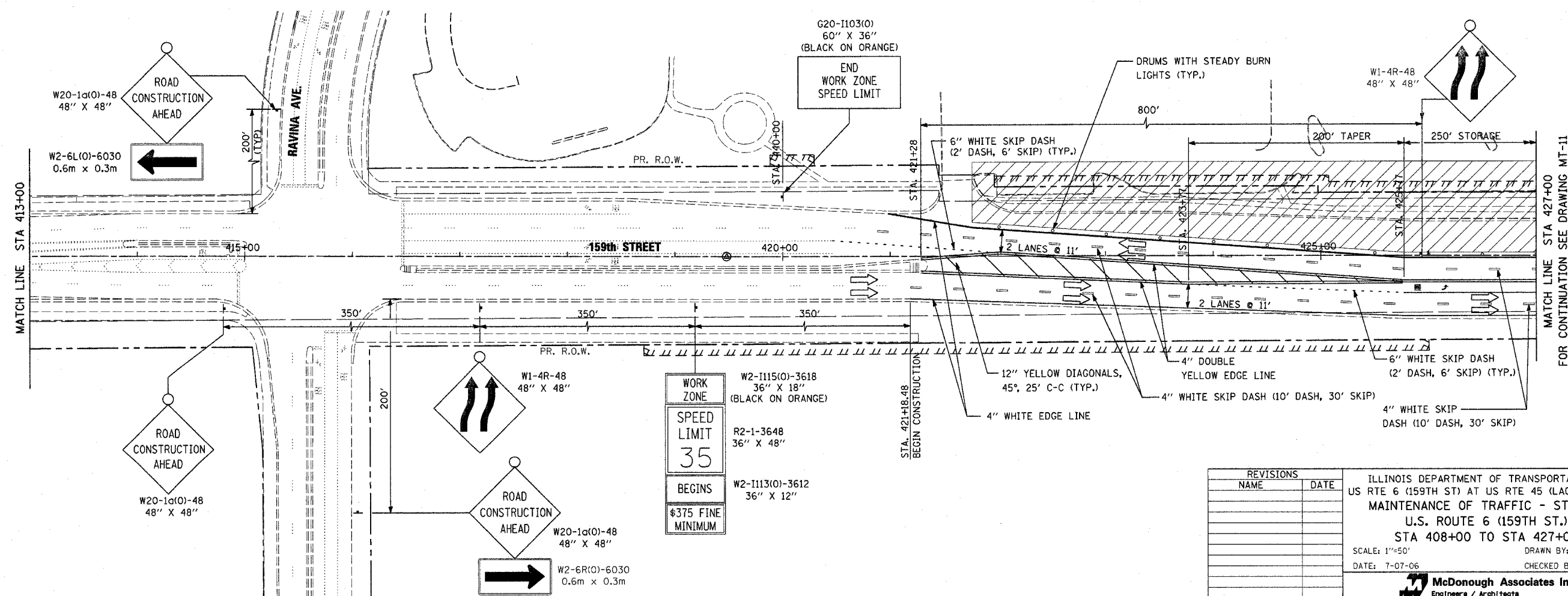
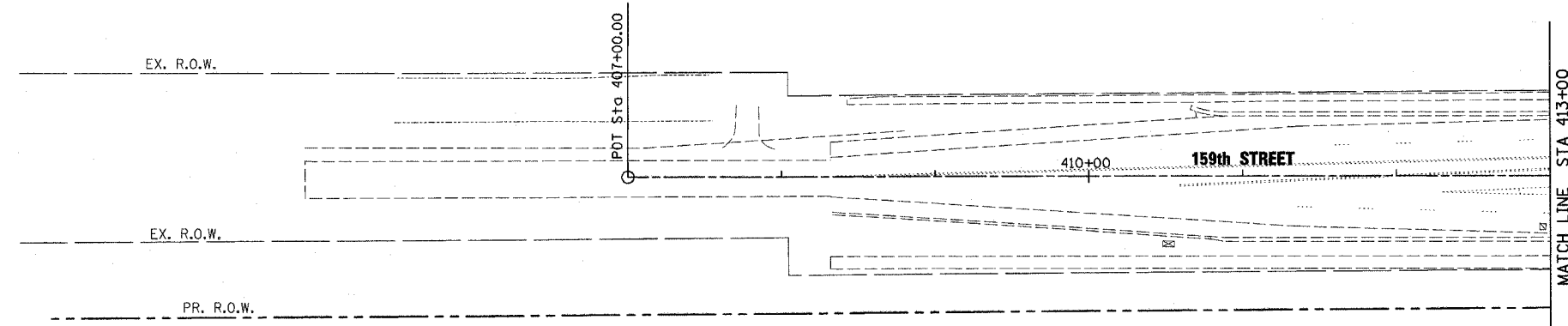


STATE	SECTION	COUNTY	TOTAL SHEETS	SHEET NO.
351	537 R-1	COOK	245	49
STA. _____ TO STA. _____		FED. ROAD DIST. NO. _____ ILLINOIS FED. AID PROJECT		
CONTRACT # 62880				

LEGEND

-  TYPE II BARRICADE WITH MONO-DIRECTIONAL STEADY BURN LIGHTS AT 50' CENTERS, 25' IN TAPERS AND 10' IN RADII (TYP.) SEE NOTE 1.
-  TYPE III BARRICADE WITH LIGHT
-  TRAFFIC LANE
-  TEMPORARY TRAFFIC ADVISORY SIGN
-  WORK AREA
-  TEMPORARY CONCRETE BARRIER
-  IMPACT ATTENUATOR, TEMPORARY, FULLY REDIRECTIVE, NARROW, NCHRP 350, TEST LEVEL 2



REVISIONS	
NAME	DATE

ILLINOIS DEPARTMENT OF TRANSPORTATION
 US RTE 6 (159TH ST) AT US RTE 45 (LAGRANGE RD)
 MAINTENANCE OF TRAFFIC - STAGE 1
 U.S. ROUTE 6 (159TH ST.)
 STA 408+00 TO STA 427+00
 SCALE: 1"=50' DRAWN BY: TRK
 DATE: 7-07-06 CHECKED BY: RCH

McDonough Associates Inc.
 Engineers / Architects

FILES
 SDATES
 STIMES