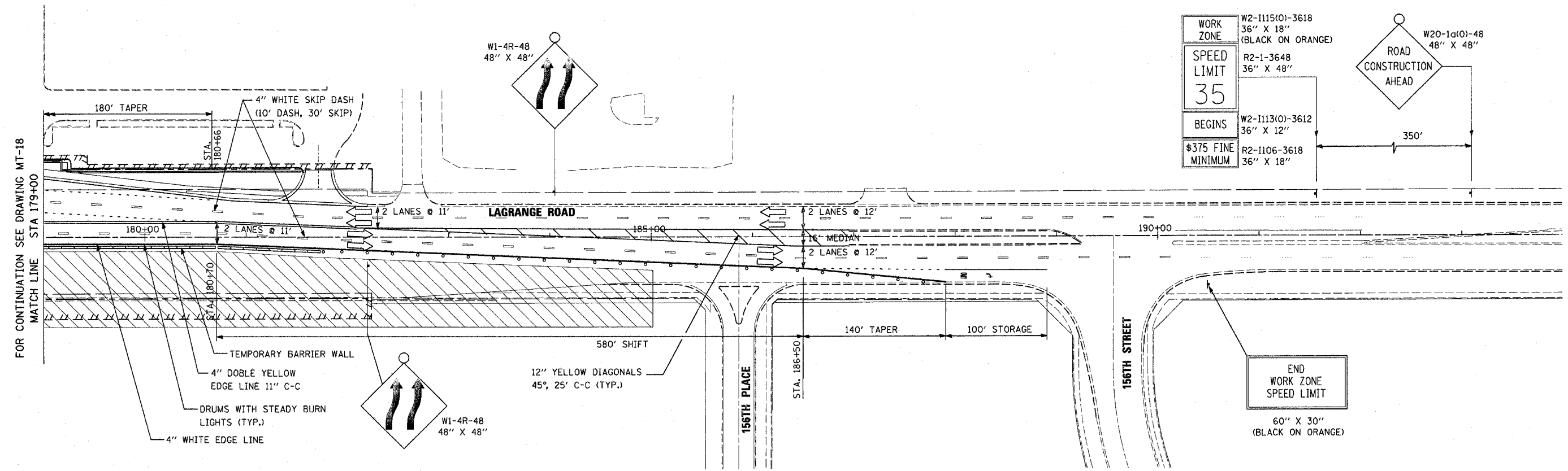


WORK ZONE	W2-1115(O)-3618 36" X 18" (BLACK ON ORANGE)
SPEED LIMIT	R2-1-3648 36" X 48"
BEGINS	W2-1113(O)-3612 36" X 12"
\$375 FINE MINIMUM	R2-1106-3618 36" X 18"

W20-1a(O)-48
48" X 48"

ROAD CONSTRUCTION AHEAD

350'



FOR CONTINUATION SEE DRAWING MT-18
MATCH LINE STA 179+00

LEGEND

- TYPE II BARRICADE WITH MONO-DIRECTIONAL STEADY BURN LIGHTS AT 50' CENTERS, 25' IN TAPERS AND 10' IN RADII (TYP.) SEE NOTE 1.
- TYPE III BARRICADE WITH LIGHT
- TRAFFIC LANE
- TEMPORARY TRAFFIC ADVISORY SIGN
- WORK AREA
- TEMPORARY CONCRETE BARRIER
- IMPACT ATTENUATOR, TEMPORARY, FULLY REDIRECTIVE, NARROW, NCHRP 350, TEST LEVEL 2

NOTE 1:
TEMPORARY CONCRETE BARRIER SHALL BE PROVIDED WHEREVER THE VERTICAL DROP-OFF BETWEEN DRIVING LANES AND THE ADJACENT GROUND EXCEEDS 18 INCHES.

REVISIONS	
NAME	DATE

ILLINOIS DEPARTMENT OF TRANSPORTATION
US RTE 6 (159TH ST) AT US RTE 45 (LAGRANGE RD)
MAINTENANCE OF TRAFFIC - STAGE 3
U.S. 45 (LAGRANGE ROAD)
STA 179+00 TO STA 183+50

SCALE: 1"=50' DRAWN BY: TRK
DATE: 7-07-06 CHECKED BY: RCH

McDonough Associates Inc.
Engineers / Architects