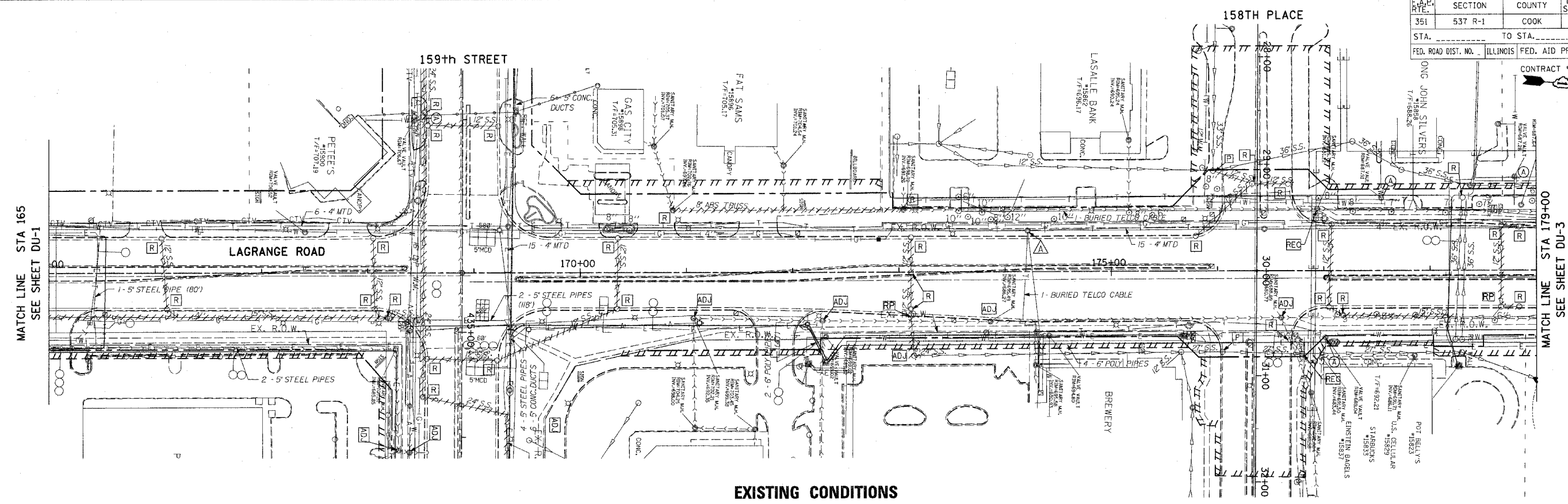
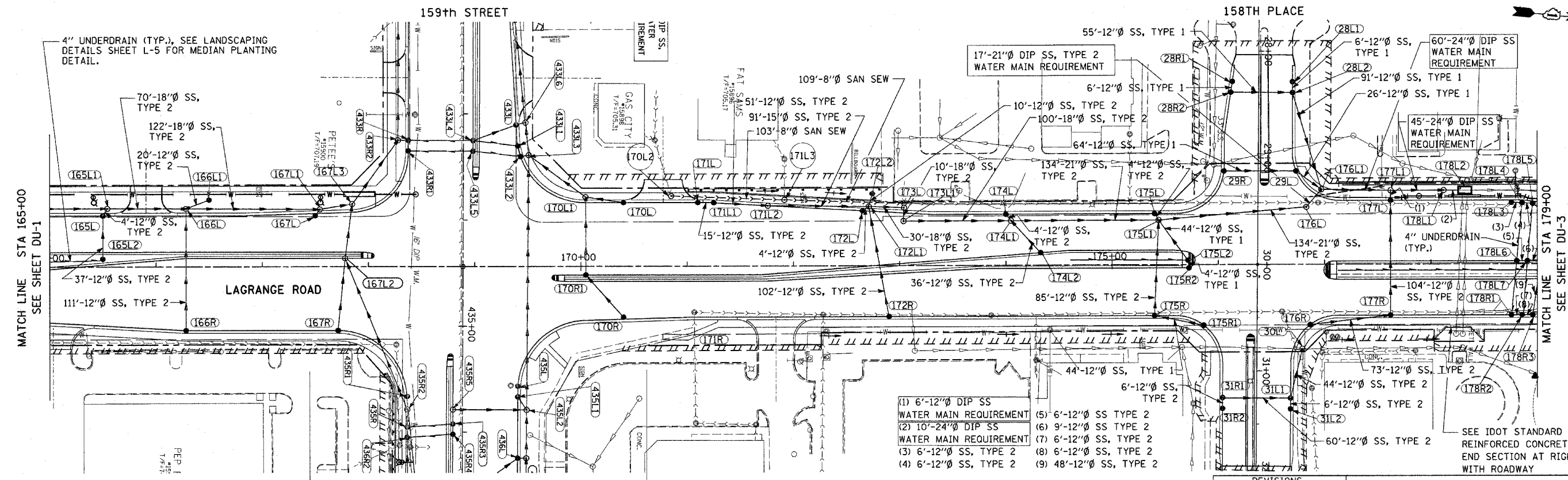


F.A.D. DIST. NO.	SECTION	COUNTY	TOTAL SHEETS	SHEET NO.
351	537 R-1	COOK	245	77
STA.	TO STA.		FED. AID PROJECT	
	ILLINOIS		CONTRACT # 62880	



EXISTING CONDITIONS

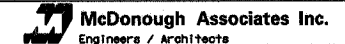


PROPOSED IMPROVEMENTS

- NOTE:**
- SEE DRAWING DU-19 FOR JUNCTION CHAMBER 178L2 DETAILS AND DU-21 FOR RESTRICTOR MANHOLE DETAILS.
 - SEE DRAWING DU-15 TO DU-18 FOR WATER MAIN RELATED ITEMS.

REVISIONS	NAME	DATE

ILLINOIS DEPARTMENT OF TRANSPORTATION
 US RTE 6 (159TH ST) AT US RTE 45 (LAGRANGE RD)
**US RTE 45 (LAGRANGE ROAD)
 DRAINAGE AND UTILITY PLAN
 STA 165+00 TO STA 179+00**
 SCALE: 1"=50'
 DATE: 7-07-06
 DRAWN BY: OIU
 CHECKED BY: RCH



FILES
 DATES
 TIMES