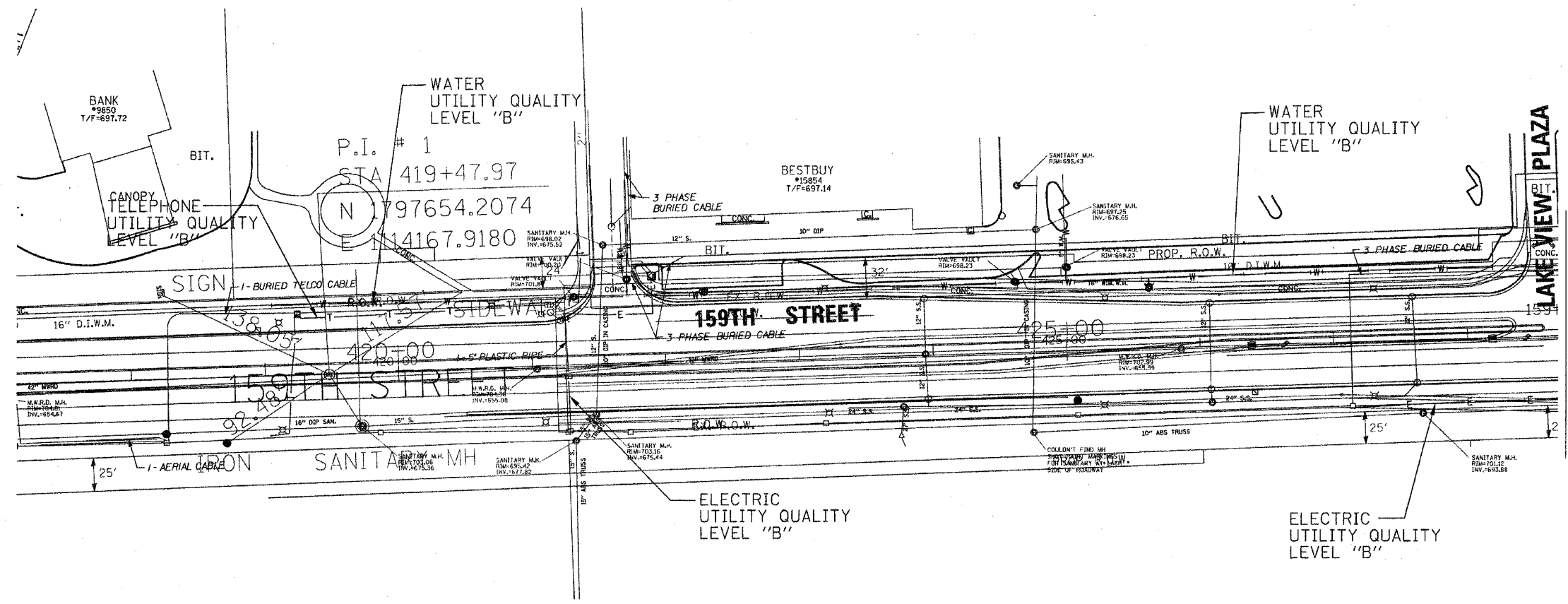


F.A. RTE.	SECTION	COUNTY	TOTAL SHEETS	SHEET NO.
351	537R-1	Cook	245	103
STA.		TO STA.		
FED. ROAD DIST. NO.		ILLINOIS FED. AID PROJECT		



MATCH TO PAGE 2

The SBC locations depicted have been obtained through the application of geophysical methods to determine the existence and approximate horizontal position of these facilities. However, SBC will not provide TBE Group, Inc. with utility records to help verify the locations of their existing underground facilities. Therefore, TBE is unable to verify the completeness of the SBC locations depicted in accordance with the CI/ASCE Standard 38-02.


The Village of Orland Park Water locations depicted have been obtained through the application of geophysical methods to determine the existence and approximate horizontal position of these facilities. However, the Village of Orland Park Water Department will not provide TBE Group, Inc. with utility records to help verify the locations of their existing underground facilities. Therefore, TBE is unable to verify the completeness of Orland Park Water locations depicted in accordance with the CI/ASCE Standard 38-02.

TBE GROUP, INC.
 CIVIL ENGINEERING * TRANSPORTATION * ENVIRONMENTAL
 * PLANNING * UTILITY ENGINEERING * LOCATING

IL09500247
 TBE SUE PAGE NO: 3 of 6
 Checked by: *[Signature]*
 SUE Quality Level "B" : Designating

— CTV —	— CTV —	— CABLE TV —
— T —	— T —	— TELEPHONE —
— W —	— W —	— WATER —
— G —	— G —	— GAS —
— E —	— E —	— ELECTRIC —

Utilities shown in color on these plans as depicted in the legend have been investigated by TBE Group, Inc in accordance with SUE Industry Standards. All other information shown has been provided to TBE Group, Inc by others. TBE's SUE field investigation was performed during the period 1-18-06 through 3-02-06. Changes to utilities after these dates may have been made and therefore may result in variances from this plan. Consideration should be given to updating this plan if deemed advisable prior to final design and construction.


 205 W. WACKER DRIVE
 SUITE 1020
 CHICAGO, IL 60606
 (312) 704-1970

REVISIONS	
NAME	DATE

ILLINOIS DEPARTMENT OF TRANSPORTATION
 SUE Investigation of Underground Utilities
 RT. 6 (159th Street) and US Rt. 45 (96th Avenue)
 Orland Park, Cook County
 Section No. 537R-1
 Contract No. 62880
 DRAWN BY : KLC
 SCALE : 1" = 50'