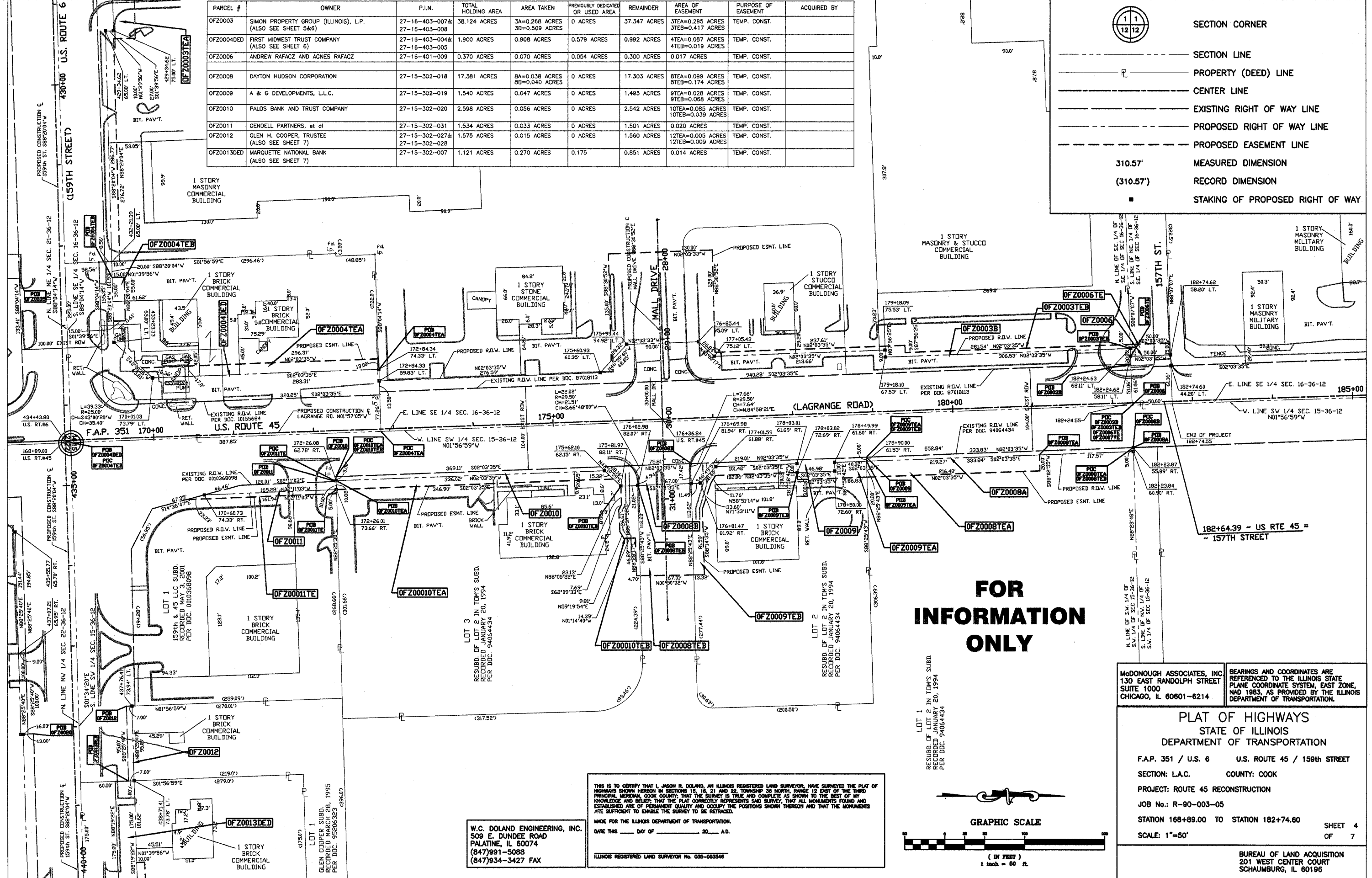
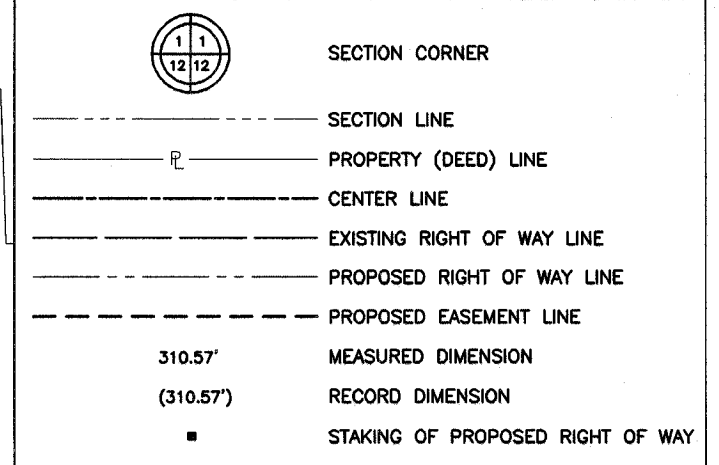


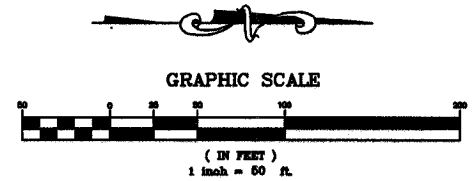
PARCEL #	OWNER	P.I.N.	TOTAL HOLDING AREA	AREA TAKEN	PREVIOUSLY DEDICATED OR USED AREA	REMAINDER	AREA OF EASEMENT	PURPOSE OF EASEMENT	ACQUIRED BY
OFZ0003	SIMON PROPERTY GROUP (ILLINOIS), L.P. (ALSO SEE SHEET 5&6)	27-16-403-007& 27-16-403-008	38.124 ACRES	3A=0.268 ACRES 3B=0.509 ACRES	0 ACRES	37.347 ACRES	3TEA=0.295 ACRES 3TEB=0.417 ACRES	TEMP. CONST.	
OFZ0004DED	FIRST MIDWEST TRUST COMPANY (ALSO SEE SHEET 6)	27-16-403-004& 27-16-403-005	1.900 ACRES	0.908 ACRES	0.579 ACRES	0.992 ACRES	4TEA=0.087 ACRES 4TEB=0.019 ACRES	TEMP. CONST.	
OFZ0006	ANDREW RAFACZ AND AGNES RAFACZ	27-16-401-009	0.370 ACRES	0.070 ACRES	0.054 ACRES	0.300 ACRES	0.017 ACRES	TEMP. CONST.	
OFZ0008	DAYTON HUDSON CORPORATION	27-15-302-018	17.381 ACRES	8A=0.038 ACRES 8B=0.040 ACRES	0 ACRES	17.303 ACRES	8TEA=0.099 ACRES 8TEB=0.174 ACRES	TEMP. CONST.	
OFZ0009	A & G DEVELOPMENTS, L.L.C.	27-15-302-019	1.540 ACRES	0.047 ACRES	0 ACRES	1.493 ACRES	9TEA=0.028 ACRES 9TEB=0.068 ACRES	TEMP. CONST.	
OFZ0010	PALOS BANK AND TRUST COMPANY	27-15-302-020	2.598 ACRES	0.056 ACRES	0 ACRES	2.542 ACRES	10TEA=0.085 ACRES 10TEB=0.039 ACRES	TEMP. CONST.	
OFZ0011	GENDELL PARTNERS, et al	27-15-302-031	1.534 ACRES	0.033 ACRES	0 ACRES	1.501 ACRES	0.020 ACRES	TEMP. CONST.	
OFZ0012	GLEN H. COOPER, TRUSTEE (ALSO SEE SHEET 7)	27-15-302-027& 27-15-302-028	1.575 ACRES	0.015 ACRES	0 ACRES	1.560 ACRES	12TEA=0.005 ACRES 12TEB=0.009 ACRES	TEMP. CONST.	
OFZ0013DED	MARQUETTE NATIONAL BANK (ALSO SEE SHEET 7)	27-15-302-007	1.121 ACRES	0.270 ACRES	0.175	0.851 ACRES	0.014 ACRES	TEMP. CONST.	



SEE SHEET 3

**FOR INFORMATION ONLY**

LOT 1  
RESUBD. OF LOT 2 IN TOM'S SUBD.  
RECORDED JANUARY 20, 1994  
PER DOC. 94064434



W.C. DOLAND ENGINEERING, INC.  
509 E. DUNDEE ROAD  
PALATINE, IL 60074  
(847)991-5088  
(847)934-3427 FAX

THIS IS TO CERTIFY THAT J. LASON R. DOLAND, AN ILLINOIS REGISTERED LAND SURVEYOR, HAS SURVEYED THE PLAT OF HIGHWAYS SHOWN HEREON IN SECTIONS 15, 16, 21 AND 22, TOWNSHIP 36 NORTH, RANGE 12 EAST OF THE THIRD PRINCIPAL MERIDIAN, COOK COUNTY, ILLINOIS, THAT THE SURVEY IS TRUE AND COMPLETE AS SHOWN TO THE BEST OF MY KNOWLEDGE AND BELIEF; THAT THE PLAT CORRECTLY REPRESENTS SAID SURVEY, THAT ALL MONUMENTS FOUND AND ESTABLISHED ARE OF PERMANENT QUALITY AND OCCUPY THE POSITIONS SHOWN THEREON AND THAT THE MONUMENTS ARE SUFFICIENT TO ENABLE THE SURVEY TO BE RETRACED.

MADE FOR THE ILLINOIS DEPARTMENT OF TRANSPORTATION.  
DATE THIS \_\_\_\_ DAY OF \_\_\_\_\_, 20\_\_ A.D.  
ILLINOIS REGISTERED LAND SURVEYOR No. 035-003546

McDONOUGH ASSOCIATES, INC.  
130 EAST RANDOLPH STREET  
SUITE 1000  
CHICAGO, IL 60601-6214

BEARINGS AND COORDINATES ARE REFERENCED TO THE ILLINOIS STATE PLANE COORDINATE SYSTEM, EAST ZONE, NAD 1983, AS PROVIDED BY THE ILLINOIS DEPARTMENT OF TRANSPORTATION.

**PLAT OF HIGHWAYS**  
STATE OF ILLINOIS  
DEPARTMENT OF TRANSPORTATION

F.A.P. 351 / U.S. 6 U.S. ROUTE 45 / 159th STREET  
SECTION: L.A.C. COUNTY: COOK  
PROJECT: ROUTE 45 RECONSTRUCTION  
JOB No.: R-90-003-05  
STATION 168+89.00 TO STATION 182+74.60  
SCALE: 1"=50'

SHEET 4 OF 7

BUREAU OF LAND ACQUISITION  
201 WEST CENTER COURT  
SCHAUMBURG, IL 60196