



SECTION CORNER

SECTION LINE

PROPERTY (DEED) LINE

CENTER LINE

EXISTING RIGHT OF WAY LINE

PROPOSED RIGHT OF WAY LINE

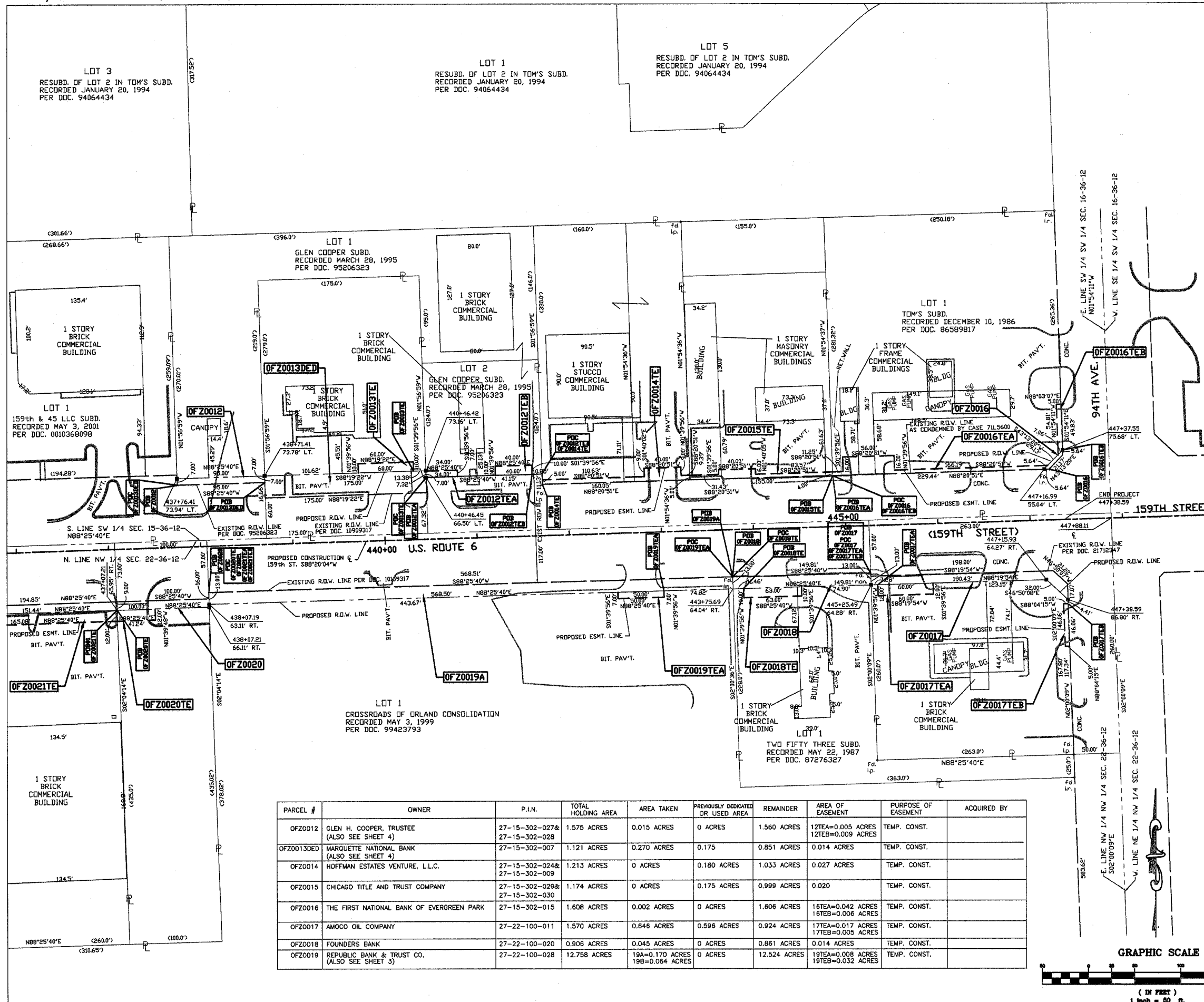
PROPOSED EASEMENT LINE

310.57' MEASURED DIMENSION

(310.57') RECORD DIMENSION

STAKING OF PROPOSED RIGHT OF WAY

**FOR INFORMATION ONLY**



W.C. DOLAND ENGINEERING, INC.  
509 E. DUNDEE ROAD  
PALATINE, IL 60074  
(847)991-5088  
(847)934-3427 FAX

THIS IS TO CERTIFY THAT I, JASON R. DOLAND, AN ILLINOIS REGISTERED LAND SURVEYOR, HAVE SURVEYED THE PLAT OF HIGHWAYS SHOWN HEREON IN SECTIONS 15, 16, 21 AND 22, TOWNSHIP 36 NORTH, RANGE 12 EAST OF THE THIRD PRINCIPAL MERIDIAN, COOK COUNTY; THAT THE SURVEY IS TRUE AND COMPLETE AS SHOWN TO THE BEST OF MY KNOWLEDGE AND BELIEF; THAT THE PLAT CORRECTLY REPRESENTS SAID SURVEY; THAT ALL MONUMENTS FOUND AND ESTABLISHED ARE OF PERMANENT QUALITY AND OCCUPY THE POSITIONS SHOWN THEREON AND THAT THE MONUMENTS ARE SUFFICIENT TO ENABLE THE SURVEY TO BE RETRACED.

MADE FOR THE ILLINOIS DEPARTMENT OF TRANSPORTATION.  
DATE THIS \_\_\_\_ DAY OF \_\_\_\_\_, 20\_\_ A.D.

ILLINOIS REGISTERED LAND SURVEYOR No. 035-003548

McDONOUGH ASSOCIATES, INC.  
130 EAST RANDOLPH STREET  
SUITE 1000  
CHICAGO, IL 60601-6214

BEARINGS AND COORDINATES ARE REFERENCED TO THE ILLINOIS STATE PLANE COORDINATE SYSTEM, EAST ZONE, NAD 1983, AS PROVIDED BY THE ILLINOIS DEPARTMENT OF TRANSPORTATION.

**PLAT OF HIGHWAYS**  
STATE OF ILLINOIS  
DEPARTMENT OF TRANSPORTATION

F.A.P. 351 / U.S. 6 U.S. ROUTE 45 / 159th STREET

SECTION: L.A.C. COUNTY: COOK

PROJECT: ROUTE 45 RECONSTRUCTION

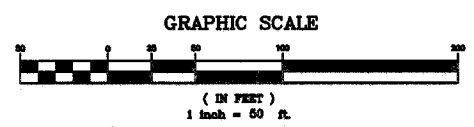
JOB No.: R-90-003-05

STATION 437+07.21 TO STATION 437+38.59

SCALE: 1"=50'

BUREAU OF LAND ACQUISITION  
201 WEST CENTER COURT  
SCHAUMBURG, IL 60196

PARCEL #	OWNER	P.I.N.	TOTAL HOLDING AREA	AREA TAKEN	PREVIOUSLY DEDICATED OR USED AREA	REMAINDER	AREA OF EASEMENT	PURPOSE OF EASEMENT	ACQUIRED BY
OFZ0012	GLEN H. COOPER, TRUSTEE (ALSO SEE SHEET 4)	27-15-302-027& 27-15-302-028	1.575 ACRES	0.015 ACRES	0 ACRES	1.560 ACRES	12TEA=0.005 ACRES 12TEB=0.009 ACRES	TEMP. CONST.	
OFZ0013DED	MARQUETTE NATIONAL BANK (ALSO SEE SHEET 4)	27-15-302-007	1.121 ACRES	0.270 ACRES	0.175	0.851 ACRES	0.014 ACRES	TEMP. CONST.	
OFZ0014	HOFFMAN ESTATES VENTURE, L.L.C.	27-15-302-024& 27-15-302-009	1.213 ACRES	0 ACRES	0.180 ACRES	1.033 ACRES	0.027 ACRES	TEMP. CONST.	
OFZ0015	CHICAGO TITLE AND TRUST COMPANY	27-15-302-029& 27-15-302-030	1.174 ACRES	0 ACRES	0.175 ACRES	0.999 ACRES	0.020	TEMP. CONST.	
OFZ0016	THE FIRST NATIONAL BANK OF EVERGREEN PARK	27-15-302-015	1.608 ACRES	0.002 ACRES	0 ACRES	1.606 ACRES	16TEA=0.042 ACRES 16TEB=0.006 ACRES	TEMP. CONST.	
OFZ0017	AMOCO OIL COMPANY	27-22-100-011	1.570 ACRES	0.646 ACRES	0.596 ACRES	0.924 ACRES	17TEA=0.017 ACRES 17TEB=0.005 ACRES	TEMP. CONST.	
OFZ0018	FOUNDERS BANK	27-22-100-020	0.906 ACRES	0.045 ACRES	0 ACRES	0.861 ACRES	0.014 ACRES	TEMP. CONST.	
OFZ0019	REPUBLIC BANK & TRUST CO. (ALSO SEE SHEET 3)	27-22-100-028	12.758 ACRES	19A=0.170 ACRES 19B=0.064 ACRES	0 ACRES	12.524 ACRES	19TEA=0.008 ACRES 19TEB=0.032 ACRES	TEMP. CONST.	



SEE SHEET 6