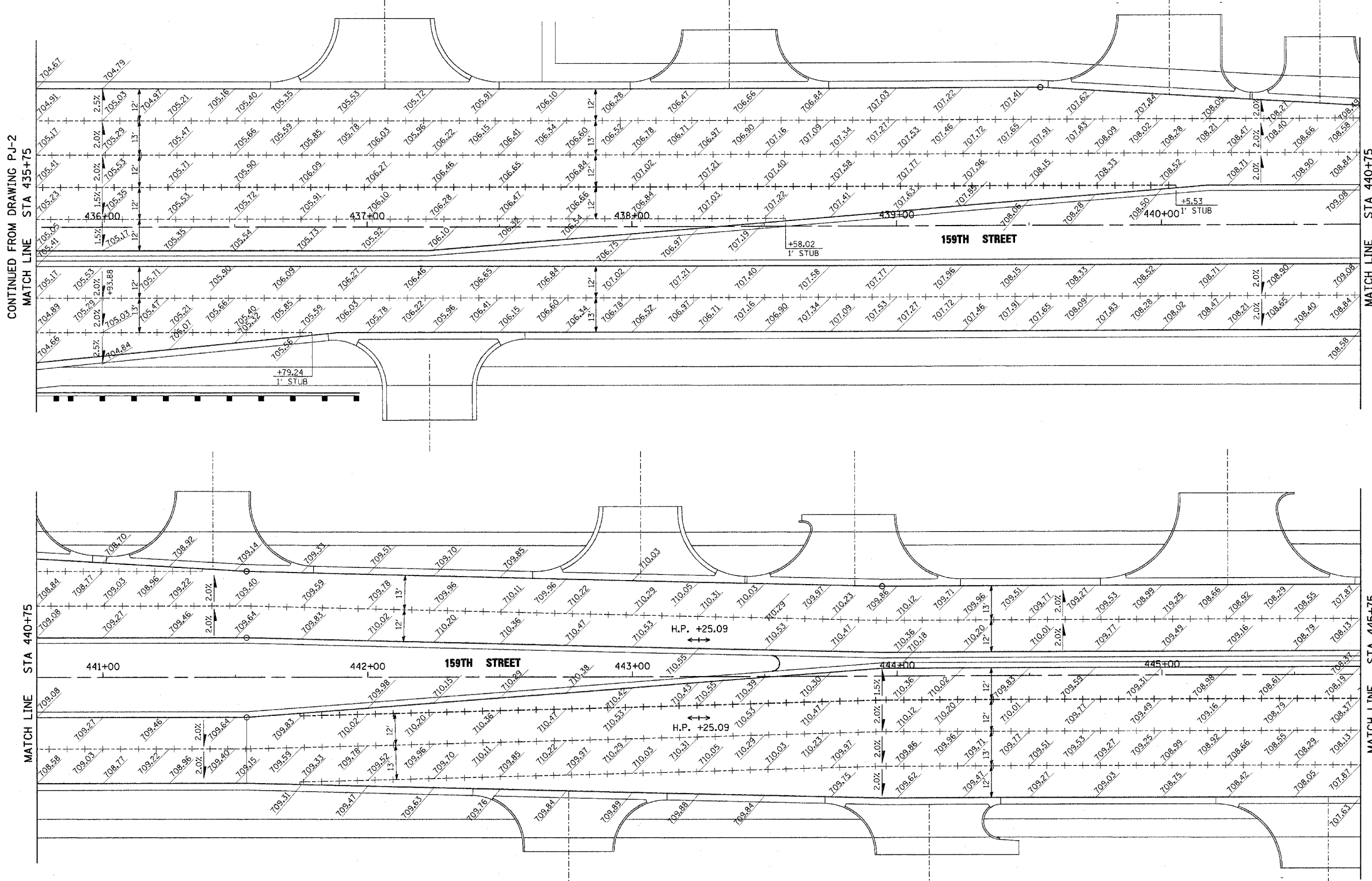


SECTION	COUNTY	TOTAL SHEETS	SHEET NO.
351	COOK	245	121
STA. TO STA.		FED. ROAD DIST. NO. ILLINOIS FED. AID PROJECT	

CONTRACT # 62880



CONTINUED FROM DRAWING PJ-2
MATCH LINE STA 435+75

MATCH LINE STA 440+75

MATCH LINE STA 440+75

MATCH LINE STA 445+75
FOR CONTINUATION SEE DRAWING PJ-8

LEGEND

----- LONGITUDINAL CONSTRUCTION JOINT GROUDED
IN PLACE, NO. 6 TIE BAR AT 24" LONG, DEFORMED
(EPOXY COATED) AT 24" CENTERS

NOTE:
TRANSVERSE CONTRACTION JOINTS SHALL BE SPACED
ACCORDING TO STANDARDS 420101 AND 420106.

REVISIONS	
NAME	DATE

ILLINOIS DEPARTMENT OF TRANSPORTATION
US RTE 6 (159TH ST) AT US RTE 45 (LAGRANGE RD)
US RTE 6 (159TH STREET)
PAVEMENT JOINT DETAILS AND ELEVATIONS
STA 435+75 TO STA 445+75
SCALE: 1"=20'
DATE: 7-07-06
DRAWN BY: BA
CHECKED BY: RCH

McDonough Associates Inc.
Engineers / Architects

I:\Dgn\pj\01007.sht
8/7/2006
3:37:35 PM