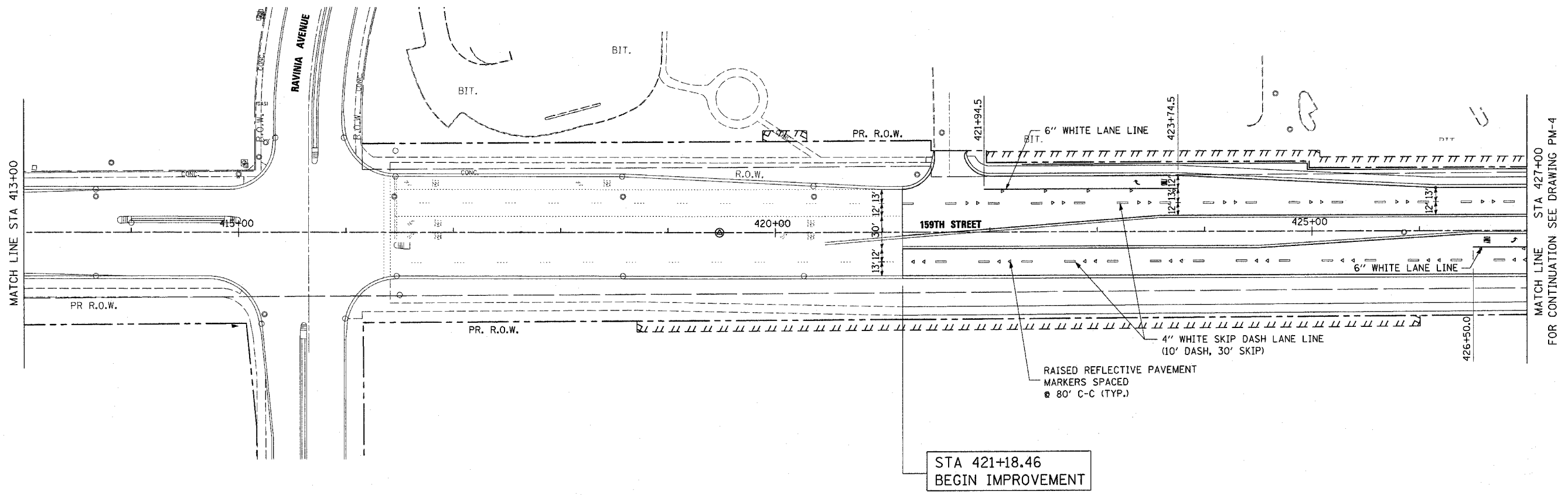


F.A.P. RTE.	SECTION	COUNTY	TOTAL SHEETS	SHEET NO.
351	537 R-1	COOK	245	125
STA. _____ TO STA. _____		FED. ROAD DIST. NO. ILLINOIS FED. AID PROJECT		
CONTRACT # 62880				



STA 421+18.46  
BEGIN IMPROVEMENT

REVISIONS	
NAME	DATE

ILLINOIS DEPARTMENT OF TRANSPORTATION  
US RTE 6 (159TH ST) AT US RTE 45 (LAGRANGE RD)  
US RTE 6 (159TH STREET)  
SIGNING AND PAVEMENT MARKING PLAN  
STA 408+00 TO STA 427+00  
SCALE: 1"=50'  
DATE: 7-07-06  
DRAWN BY: JTF  
CHECKED BY: RCH

**McDonough Associates Inc.**  
Engineers / Architects

FILES  
DATES  
TIMES