

THE FOLLOWING EXISTING TRAFFIC SIGNAL EQUIPMENT SHALL BE REMOVED BY THE CONTRACTOR, SHALL REMAIN THE PROPERTY OF THE STATE AND SHALL BE DELIVERED BY THE CONTRACTOR TO THE STATE'S TRAFFIC SIGNAL MAINTENANCE CONTRACTOR'S MAIN FACILITY AS PER THE TRAFFIC SIGNAL SPECIFICATION.

1 EACH CONTROLLER AND CABINET, COMPLETE

THE FOLLOWING ITEMS SHALL BE REMOVED BY THE CONTRACTOR AND SHALL BE DISPOSED OF BY THEM OUTSIDE OF THE RIGHT-OF-WAY AT THEIR EXPENSE. THE SALVAGE VALUE OF THE REMOVED EQUIPMENT SHALL BE REFLECTED IN THE CONTRACT BID PRICE.

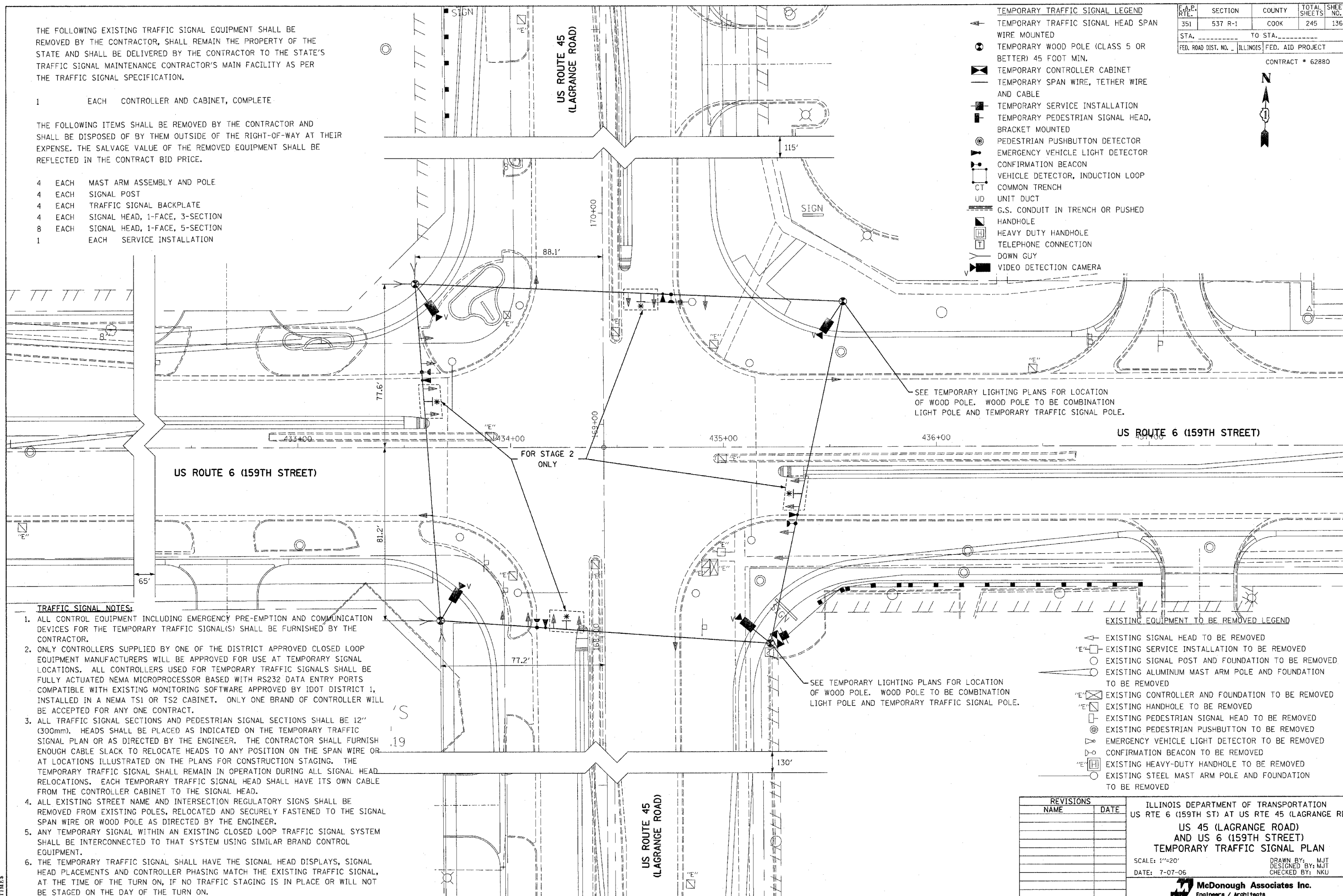
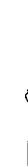
4 EACH MAST ARM ASSEMBLY AND POLE  
 4 EACH SIGNAL POST  
 4 EACH TRAFFIC SIGNAL BACKPLATE  
 4 EACH SIGNAL HEAD, 1-FACE, 3-SECTION  
 8 EACH SIGNAL HEAD, 1-FACE, 5-SECTION  
 1 EACH SERVICE INSTALLATION

- TEMPORARY TRAFFIC SIGNAL LEGEND**
- ▲ TEMPORARY TRAFFIC SIGNAL HEAD SPAN WIRE MOUNTED
  - ⊙ TEMPORARY WOOD POLE (CLASS 5 OR BETTER) 45 FOOT MIN.
  - ▢ TEMPORARY CONTROLLER CABINET
  - TEMPORARY SPAN WIRE, TETHER WIRE AND CABLE
  - ⊞ TEMPORARY SERVICE INSTALLATION
  - ⊞ TEMPORARY PEDESTRIAN SIGNAL HEAD, BRACKET MOUNTED
  - ⊞ PEDESTRIAN PUSHBUTTON DETECTOR
  - ⊞ EMERGENCY VEHICLE LIGHT DETECTOR
  - ⊞ CONFIRMATION BEACON
  - ⊞ VEHICLE DETECTOR, INDUCTION LOOP
  - COMMON TRENCH
  - UD UNIT DUCT
  - G.S. CONDUIT IN TRENCH OR PUSHED
  - ⊞ HANDHOLE
  - ⊞ HEAVY DUTY HANDHOLE
  - ⊞ TELEPHONE CONNECTION
  - DOWN GUY
  - ⊞ VIDEO DETECTION CAMERA

F.A.P. R.T.E.	SECTION	COUNTY	TOTAL SHEETS	SHEET NO.
351	537 R-1	COOK	245	136

STA. \_\_\_\_\_ TO STA. \_\_\_\_\_  
 FED. ROAD DIST. NO. \_\_\_\_\_ ILLINOIS FED. AID PROJECT

CONTRACT # 62880



**TRAFFIC SIGNAL NOTES:**

1. ALL CONTROL EQUIPMENT INCLUDING EMERGENCY PRE-EMPTION AND COMMUNICATION DEVICES FOR THE TEMPORARY TRAFFIC SIGNAL(S) SHALL BE FURNISHED BY THE CONTRACTOR.
2. ONLY CONTROLLERS SUPPLIED BY ONE OF THE DISTRICT APPROVED CLOSED LOOP EQUIPMENT MANUFACTURERS WILL BE APPROVED FOR USE AT TEMPORARY SIGNAL LOCATIONS. ALL CONTROLLERS USED FOR TEMPORARY TRAFFIC SIGNALS SHALL BE FULLY ACTUATED NEMA MICROPROCESSOR BASED WITH RS232 DATA ENTRY PORTS COMPATIBLE WITH EXISTING MONITORING SOFTWARE APPROVED BY IDOT DISTRICT 1, INSTALLED IN A NEMA TS1 OR TS2 CABINET. ONLY ONE BRAND OF CONTROLLER WILL BE ACCEPTED FOR ANY ONE CONTRACT.
3. ALL TRAFFIC SIGNAL SECTIONS AND PEDESTRIAN SIGNAL SECTIONS SHALL BE 12" (300mm). HEADS SHALL BE PLACED AS INDICATED ON THE TEMPORARY TRAFFIC SIGNAL PLAN OR AS DIRECTED BY THE ENGINEER. THE CONTRACTOR SHALL FURNISH ENOUGH CABLE SLACK TO RELOCATE HEADS TO ANY POSITION ON THE SPAN WIRE OR AT LOCATIONS ILLUSTRATED ON THE PLANS FOR CONSTRUCTION STAGING. THE TEMPORARY TRAFFIC SIGNAL SHALL REMAIN IN OPERATION DURING ALL SIGNAL HEAD RELOCATIONS. EACH TEMPORARY TRAFFIC SIGNAL HEAD SHALL HAVE ITS OWN CABLE FROM THE CONTROLLER CABINET TO THE SIGNAL HEAD.
4. ALL EXISTING STREET NAME AND INTERSECTION REGULATORY SIGNS SHALL BE REMOVED FROM EXISTING POLES, RELOCATED AND SECURELY FASTENED TO THE SIGNAL SPAN WIRE OR WOOD POLE AS DIRECTED BY THE ENGINEER.
5. ANY TEMPORARY SIGNAL WITHIN AN EXISTING CLOSED LOOP TRAFFIC SIGNAL SYSTEM SHALL BE INTERCONNECTED TO THAT SYSTEM USING SIMILAR BRAND CONTROL EQUIPMENT.
6. THE TEMPORARY TRAFFIC SIGNAL SHALL HAVE THE SIGNAL HEAD DISPLAYS, SIGNAL HEAD PLACEMENTS AND CONTROLLER PHASING MATCH THE EXISTING TRAFFIC SIGNAL, AT THE TIME OF THE TURN ON, IF NO TRAFFIC STAGING IS IN PLACE OR WILL NOT BE STAGED ON THE DAY OF THE TURN ON.

SEE TEMPORARY LIGHTING PLANS FOR LOCATION OF WOOD POLE. WOOD POLE TO BE COMBINATION LIGHT POLE AND TEMPORARY TRAFFIC SIGNAL POLE.

SEE TEMPORARY LIGHTING PLANS FOR LOCATION OF WOOD POLE. WOOD POLE TO BE COMBINATION LIGHT POLE AND TEMPORARY TRAFFIC SIGNAL POLE.

**EXISTING EQUIPMENT TO BE REMOVED LEGEND**

- ⊞ EXISTING SIGNAL HEAD TO BE REMOVED
- 'E' ⊞ EXISTING SERVICE INSTALLATION TO BE REMOVED
- ⊞ EXISTING SIGNAL POST AND FOUNDATION TO BE REMOVED
- ⊞ EXISTING ALUMINUM MAST ARM POLE AND FOUNDATION TO BE REMOVED
- 'E' ⊞ EXISTING CONTROLLER AND FOUNDATION TO BE REMOVED
- 'E' ⊞ EXISTING HANDHOLE TO BE REMOVED
- ⊞ EXISTING PEDESTRIAN SIGNAL HEAD TO BE REMOVED
- ⊞ EXISTING PEDESTRIAN PUSHBUTTON TO BE REMOVED
- ⊞ EMERGENCY VEHICLE LIGHT DETECTOR TO BE REMOVED
- ⊞ CONFIRMATION BEACON TO BE REMOVED
- 'E' ⊞ EXISTING HEAVY-DUTY HANDHOLE TO BE REMOVED
- ⊞ EXISTING STEEL MAST ARM POLE AND FOUNDATION TO BE REMOVED

REVISIONS	
NAME	DATE

ILLINOIS DEPARTMENT OF TRANSPORTATION  
 US RTE 6 (159TH ST) AT US RTE 45 (LAGRANGE RD)  
 US 45 (LAGRANGE ROAD)  
 AND US 6 (159TH STREET)  
 TEMPORARY TRAFFIC SIGNAL PLAN  
 SCALE: 1"=20'  
 DATE: 7-07-06  
 DRAWN BY: MJT  
 DESIGNED BY: MJT  
 CHECKED BY: NKU

**McDonough Associates Inc.**  
 Engineers / Architects

FILES  
 DATES  
 TIMES