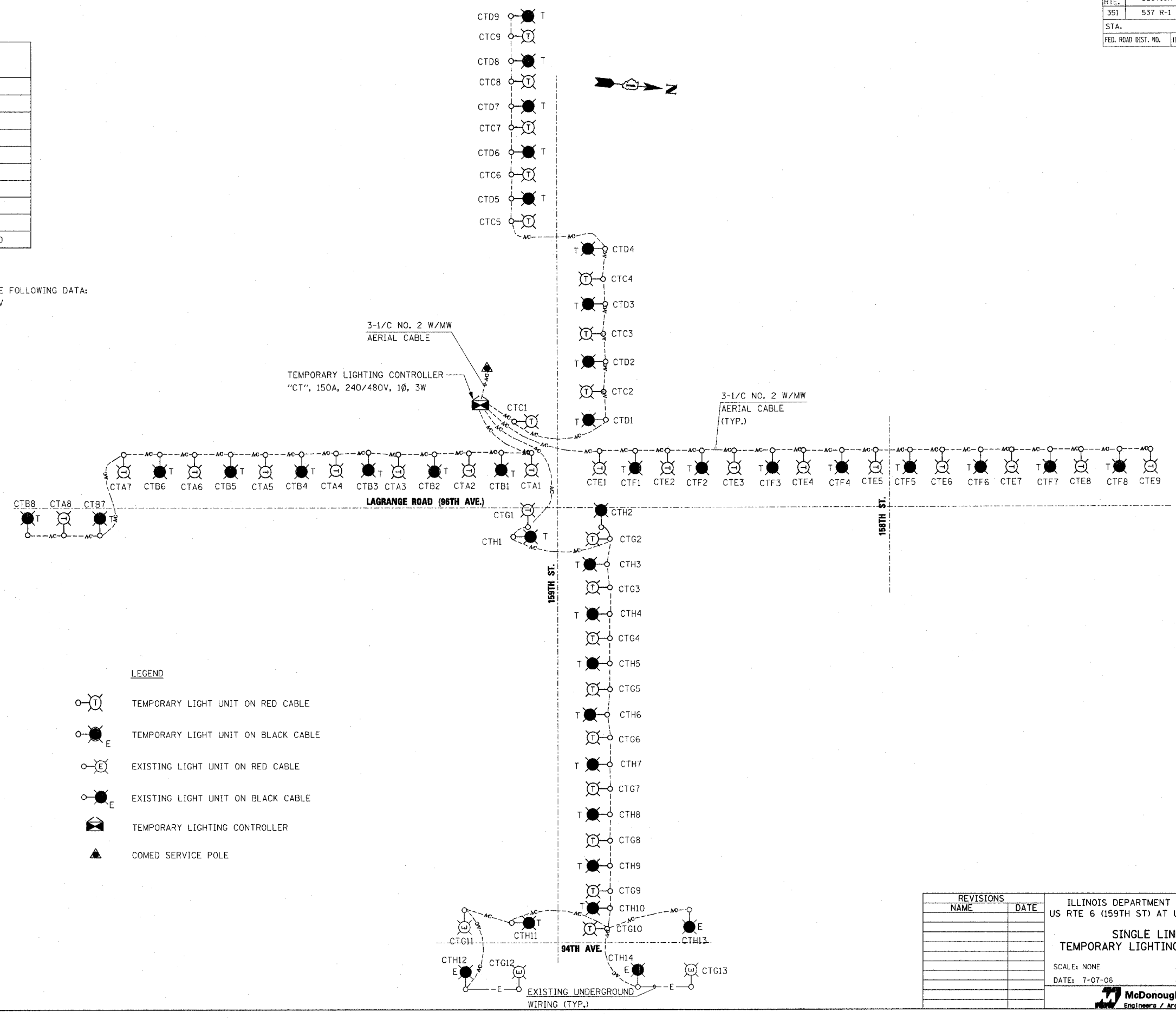


F.A.P. RTE.	SECTION	COUNTY	TOTAL SHEETS	SHEET NO.
351	537 R-1	COOK	245	171
STA.		TO STA.		
FED. ROAD DIST. NO.	ILLINOIS	FED. AID PROJECT		
CONTRACT # 62880				

CIRCUIT	AMPS	VA
A	16	3840
B	16	3840
C	18	4320
D	18	4320
E	18	4320
F	16	3840
G	26	6240
H	28	6720
TOTAL	156	37440

NOTE:
LOAD INFORMATION IS BASED ON THE FOLLOWING DATA:
400W HPS LUMINAIRE: 2AMP @ 240V



- LEGEND**
- TEMPORARY LIGHT UNIT ON RED CABLE
 - TEMPORARY LIGHT UNIT ON BLACK CABLE
 - EXISTING LIGHT UNIT ON RED CABLE
 - EXISTING LIGHT UNIT ON BLACK CABLE
 - TEMPORARY LIGHTING CONTROLLER
 - COMED SERVICE POLE

REVISIONS	
NAME	DATE

ILLINOIS DEPARTMENT OF TRANSPORTATION
US RTE 6 (159TH ST) AT US RTE 45 (LAGRANGE RD)

**SINGLE LINE DIAGRAM
TEMPORARY LIGHTING CONTROLLER "CT"**

SCALE: NONE
DATE: 7-07-06

DRAWN BY: MB
CHECKED BY: KMY

McDonough Associates Inc.
Engineers / Architects

WE-2

FILES
DATES
STAMP