

STATE	SECTION	COUNTY	TOTAL SHEETS	SHEET NO.
ILLINOIS			245	195
STA.		TO STA.		
FED. ROAD DIST. NO.		ILLINOIS FED. AID PROJECT		705
				62880

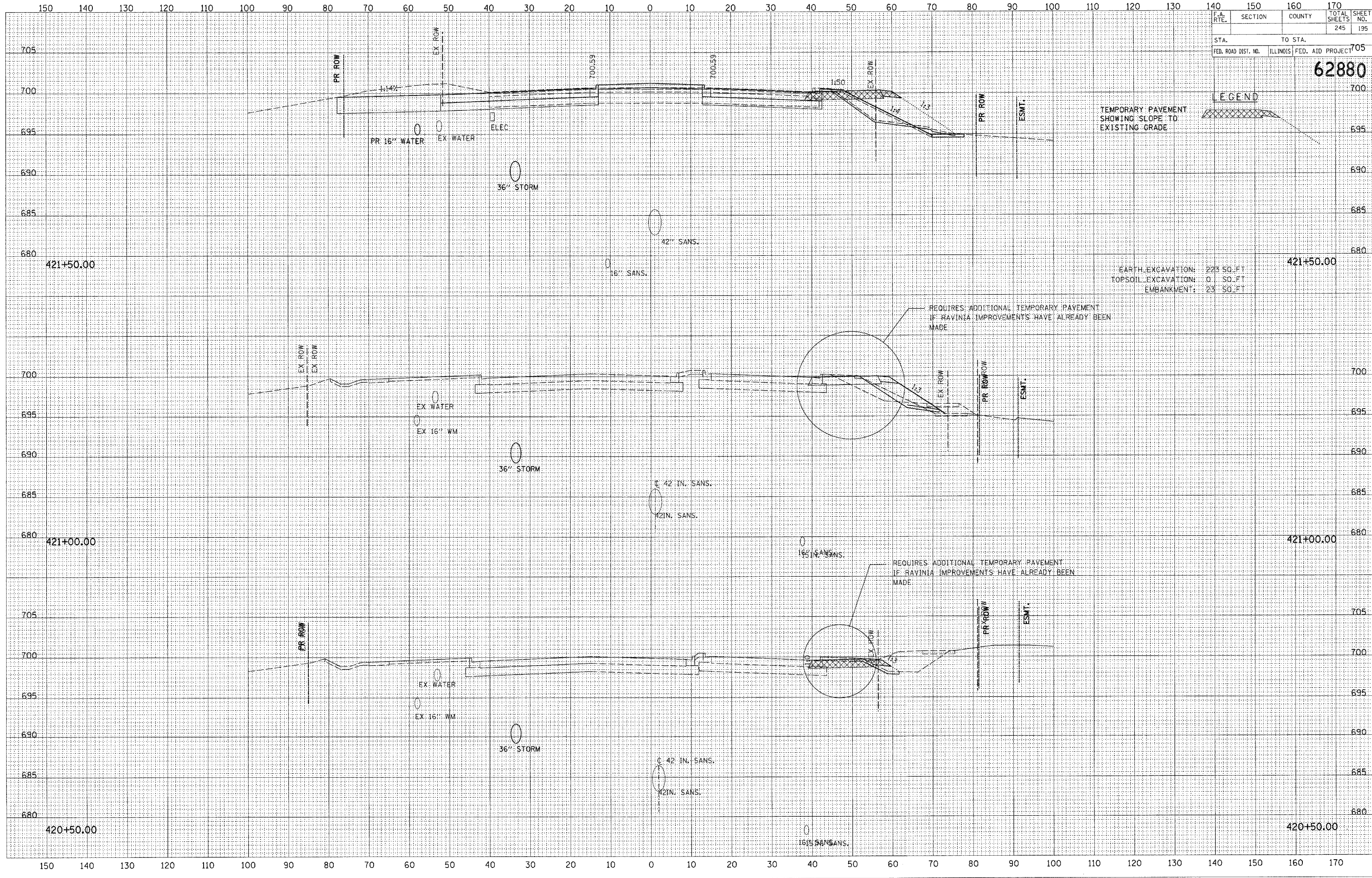
LEGEND

TEMPORARY PAVEMENT
SHOWING SLOPE TO
EXISTING GRADE

EARTH EXCAVATION: 223 SQ. FT.
TOPSOIL EXCAVATION: 0 SQ. FT.
EMBANKMENT: 23 SQ. FT.

REQUIRES ADDITIONAL TEMPORARY PAVEMENT
IF RAVINE IMPROVEMENTS HAVE ALREADY BEEN
MADE

REQUIRES ADDITIONAL TEMPORARY PAVEMENT
IF RAVINE IMPROVEMENTS HAVE ALREADY BEEN
MADE



DATE	BY
DATE	BY
DATE	BY

DATE	BY
DATE	BY
DATE	BY