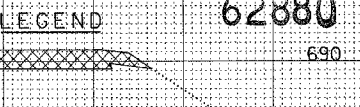


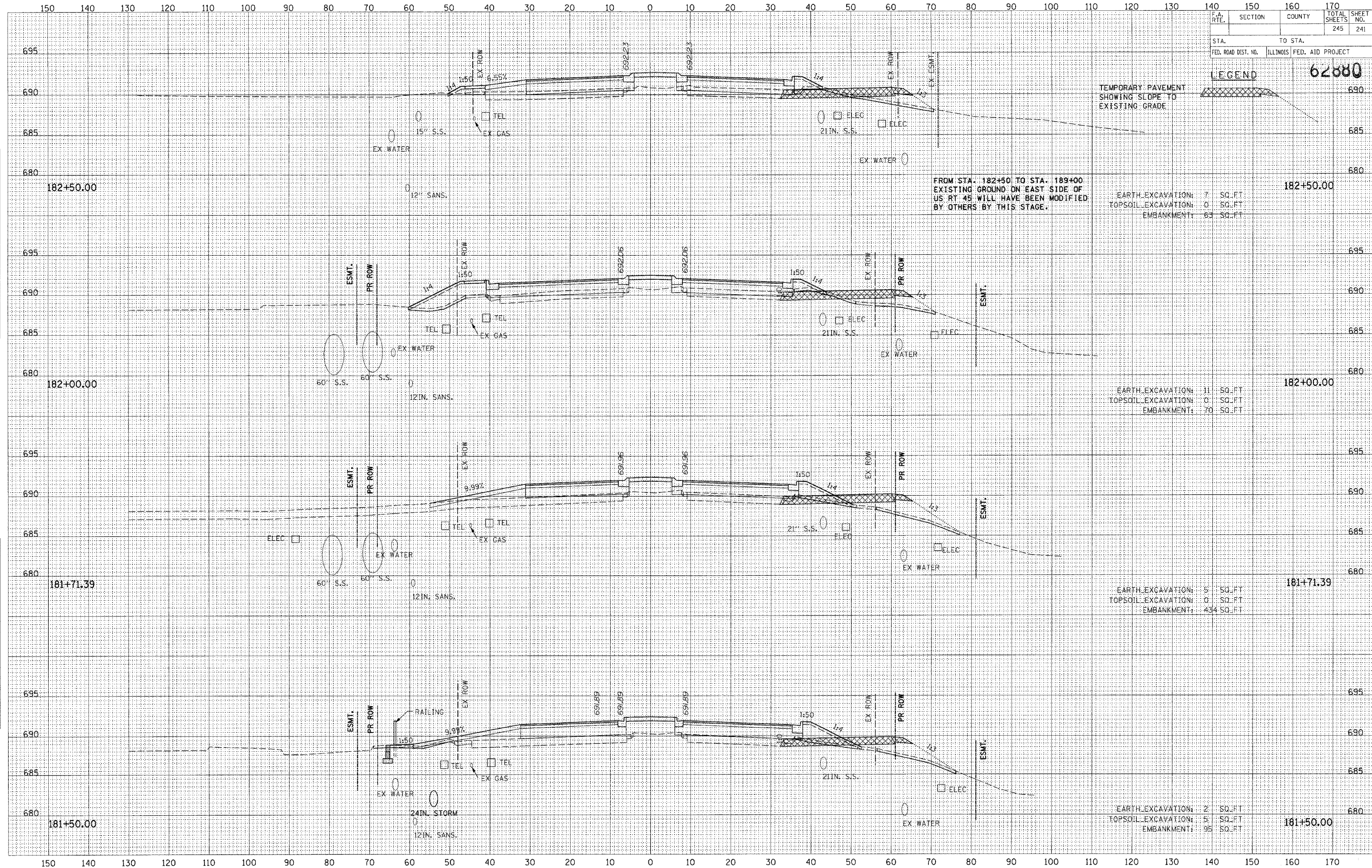
F.A. RTE.	SECTION	COUNTY	TOTAL SHEETS	SHEET NO.
			245	241
STA.		TO STA.		
FED. ROAD DIST. NO.		ILLINOIS FED. AID PROJECT		

62880



DATE	BY
DATE	BY
DATE	BY
DATE	BY
DATE	BY

DATE	BY
DATE	BY
DATE	BY
DATE	BY
DATE	BY



FROM STA. 182+50 TO STA. 189+00
EXISTING GROUND ON EAST SIDE OF
US RT 45 WILL HAVE BEEN MODIFIED
BY OTHERS BY THIS STAGE.

EARTH EXCAVATION: 7 SQ.FT
TOPSOIL EXCAVATION: 0 SQ.FT
EMBANKMENT: 63 SQ.FT

EARTH EXCAVATION: 31 SQ.FT
TOPSOIL EXCAVATION: 0 SQ.FT
EMBANKMENT: 70 SQ.FT

EARTH EXCAVATION: 5 SQ.FT
TOPSOIL EXCAVATION: 0 SQ.FT
EMBANKMENT: 434 SQ.FT

EARTH EXCAVATION: 2 SQ.FT
TOPSOIL EXCAVATION: 5 SQ.FT
EMBANKMENT: 95 SQ.FT