

F.A. RTE.	SECTION	COUNTY	TOTAL SHEETS	SHEET NO.
361	697 R-1	COOK	245	242
STA.		TO STA.		
FED. ROAD DIST. NO.		ILLINOIS	FED. AID PROJECT	
			# 62880	

LEGEND

TEMPORARY PAVEMENT SHOWING SLOPE TO EXISTING GRADE

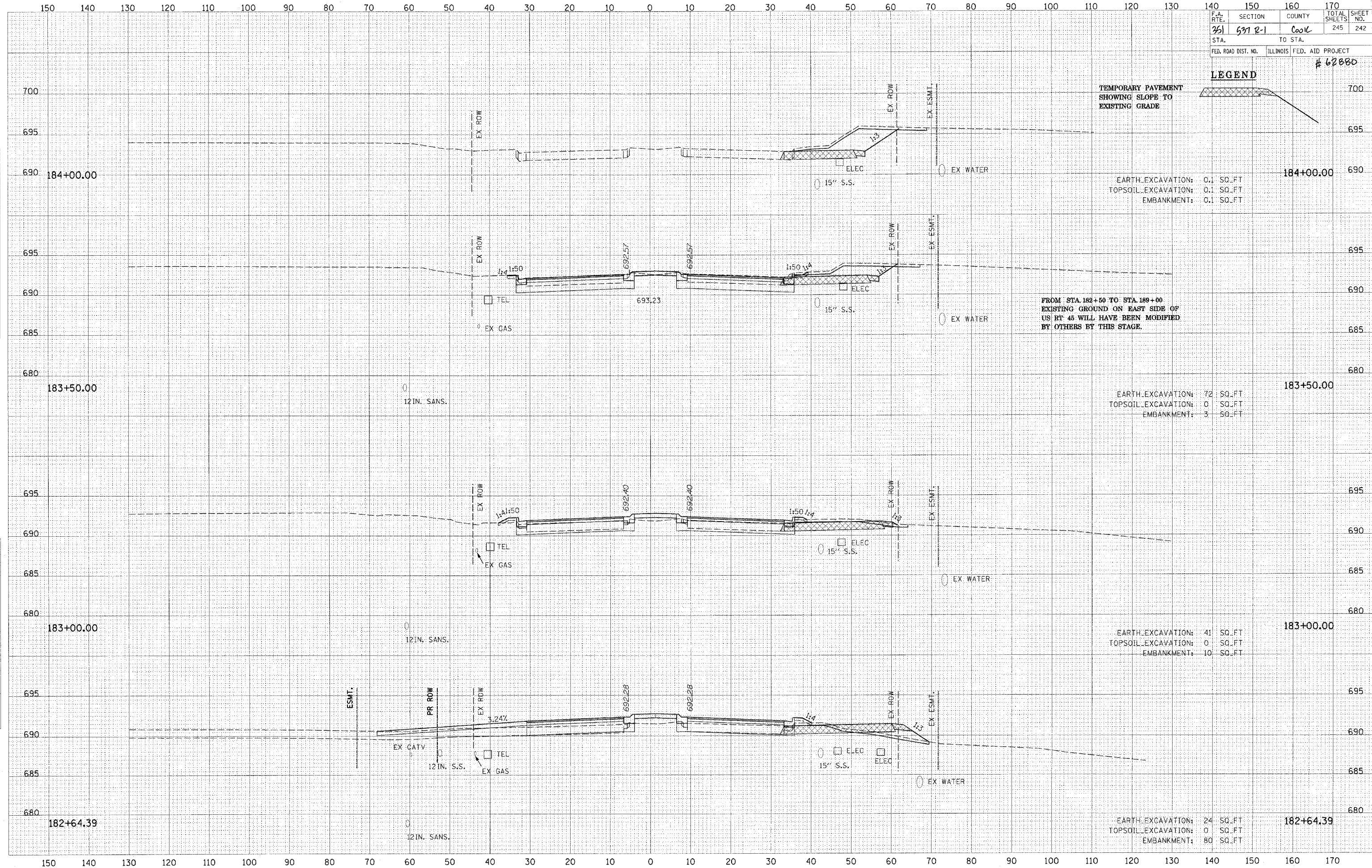
EARTH EXCAVATION: 0.1 SQ.FT
TOPSOIL EXCAVATION: 0.1 SQ.FT
EMBANKMENT: 0.1 SQ.FT

EARTH EXCAVATION: 72 SQ.FT
TOPSOIL EXCAVATION: 0 SQ.FT
EMBANKMENT: 3 SQ.FT

EARTH EXCAVATION: 41 SQ.FT
TOPSOIL EXCAVATION: 0 SQ.FT
EMBANKMENT: 10 SQ.FT

EARTH EXCAVATION: 24 SQ.FT
TOPSOIL EXCAVATION: 0 SQ.FT
EMBANKMENT: 80 SQ.FT

FROM STA. 182+50 TO STA. 189+00
EXISTING GROUND ON EAST SIDE OF
US RT 45 WILL HAVE BEEN MODIFIED
BY OTHERS BY THIS STAGE.



FINAL SURVEY	DATE
BY	
SURVEYED	
NOTE BOOK	
AREAS CHECKED	
NO.	

ORIGINAL SURVEY	DATE
BY	
SURVEYED	
NOTE BOOK	
AREAS CHECKED	
NO.	