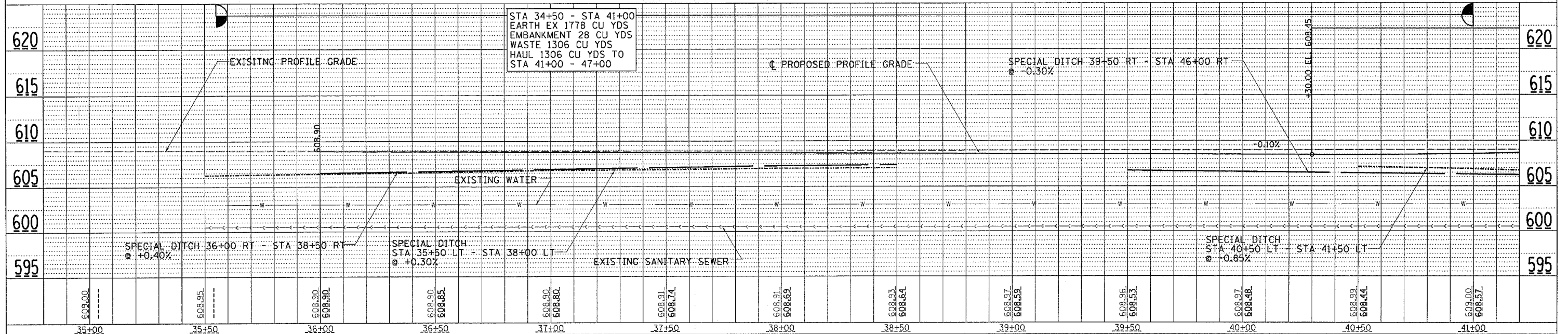
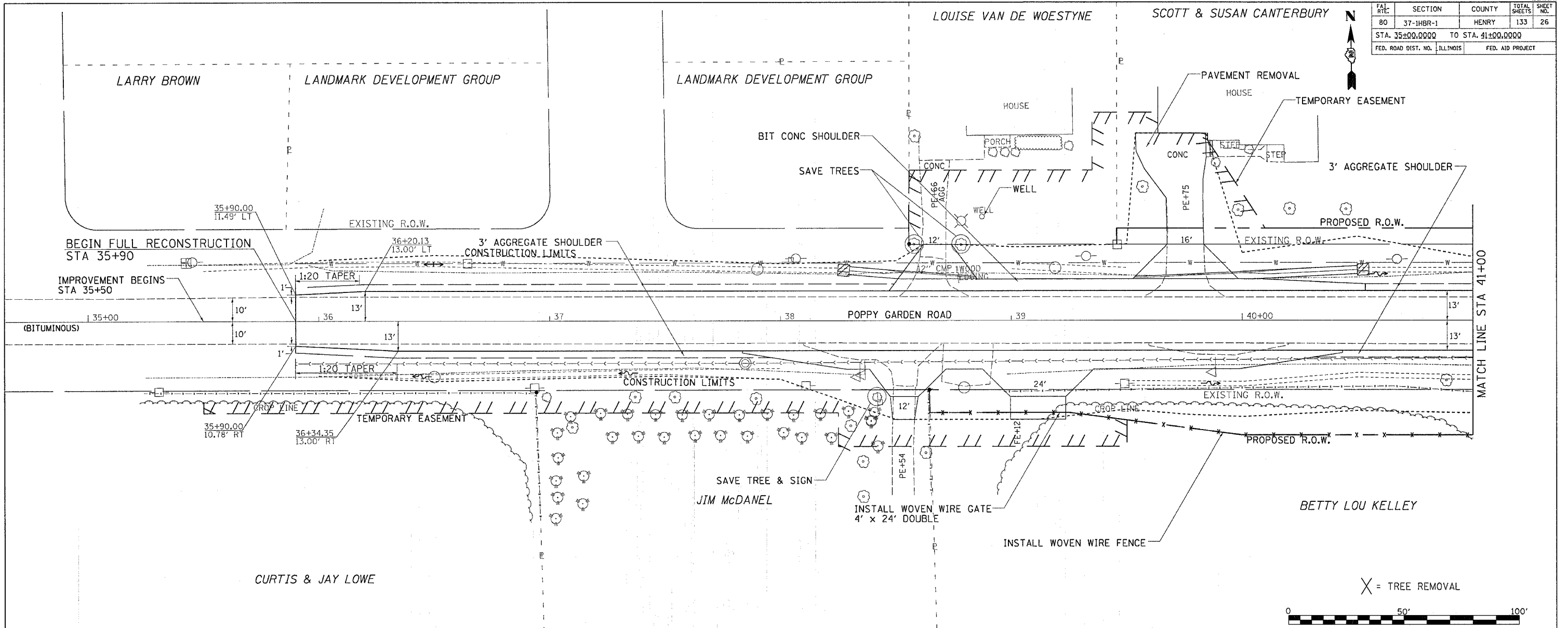


F&E	SECTION	COUNTY	TOTAL SHEETS	SHEET NO.
80	37-1HBR-1	HENRY	133	26
STA. 35+00.0000 TO STA. 41+00.0000				
FED. ROAD DIST. NO. ILLINOIS			FED. AID PROJECT	

DATE	BY	REVISION

DATE	BY	REVISION



**POPPY GARDEN RD
STA 35+00 - STA 41+00**

DATE TIME
BY SPEC
BY SPEC
BY SPEC
BY SPEC