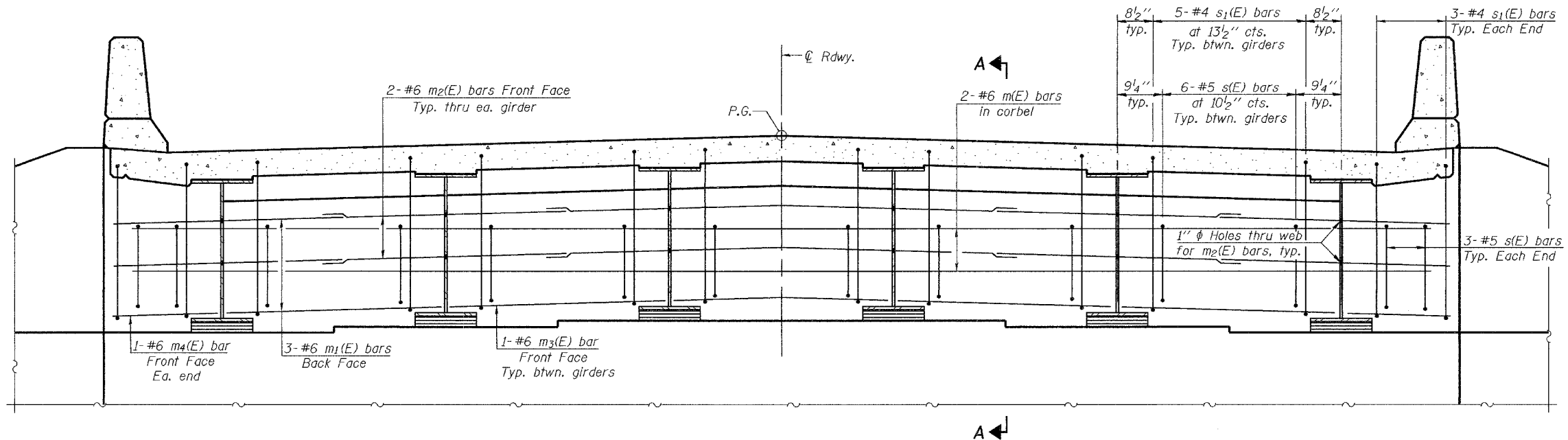


STATE OF ILLINOIS  
DEPARTMENT OF TRANSPORTATION

ROUTE NO.	SECTION	COUNTY	DIST.	SHEET NO.	SHEET NO. 7 18 SHEETS
F.A.I. 80	37-IHBR-1	HENRY	133	70	
FED. ROAD DIST. NO. 7		ILLINOIS		FED. AID PROJECT-	

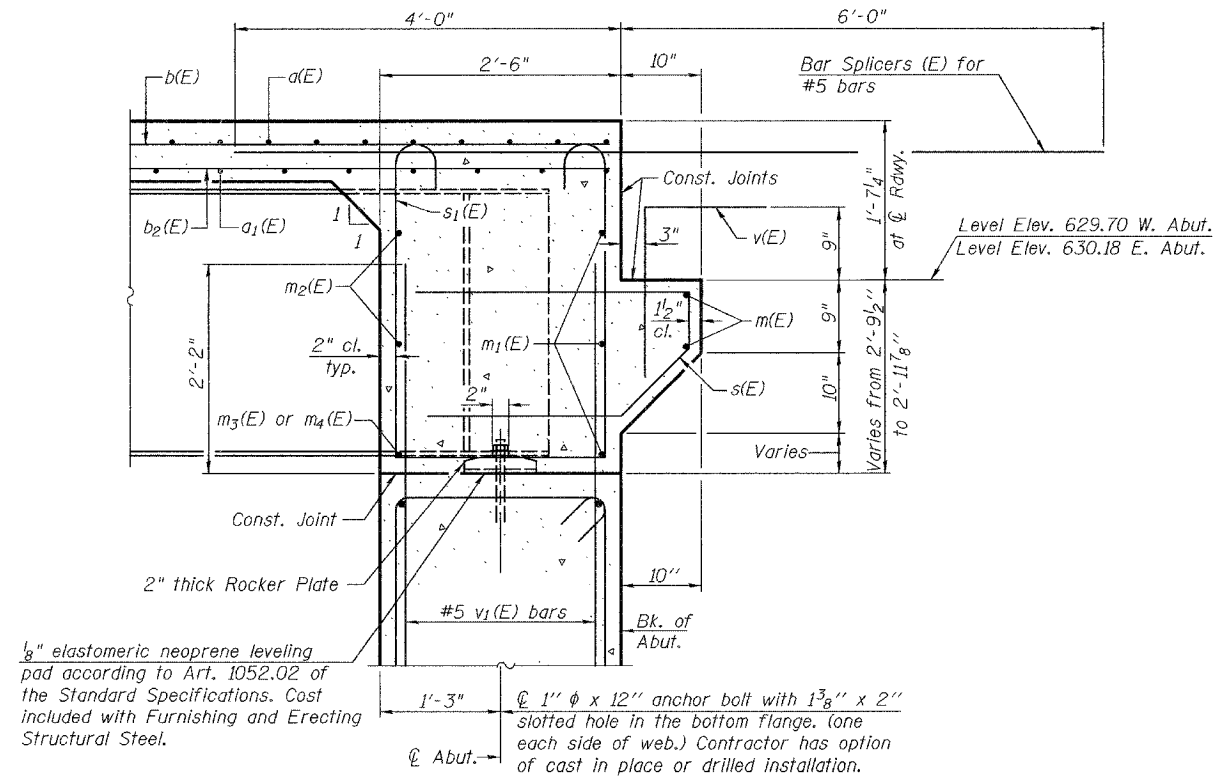
Contract #64602



**DIAPHRAGM ELEVATION AT ABUTMENT**  
(Bearing Stiffeners not shown)

Notes: Reinforcement bars in diaphragm are billed with superstructure on sheet 6 of 18.  
Concrete in diaphragm is included with Concrete Superstructure on sheet 6 of 18.  
For details of bars s(E) & s<sub>1</sub>(E) see sheet 6 of 18.  
For anchor bolt details see sheet 11 of 18.

**MIN. BAR LAP**  
#6 bar = 2'-9"



**SECTION A-A**

DESIGNED	Michael D. Cima
CHECKED	Phillip R. Litchfield
DRAWN	R. Sommer
CHECKED	MDC/PRL

EXAMINED	September 25, 2006	Thomas J. Domagala
PASSED		Ralph E. Anderson

**DIAPHRAGM DETAILS**  
F.A.I. RT. 80 SEC. 37-IHBR-1  
HENRY COUNTY  
STATION 461+73.82  
STRUCTURE NO. 037-0171