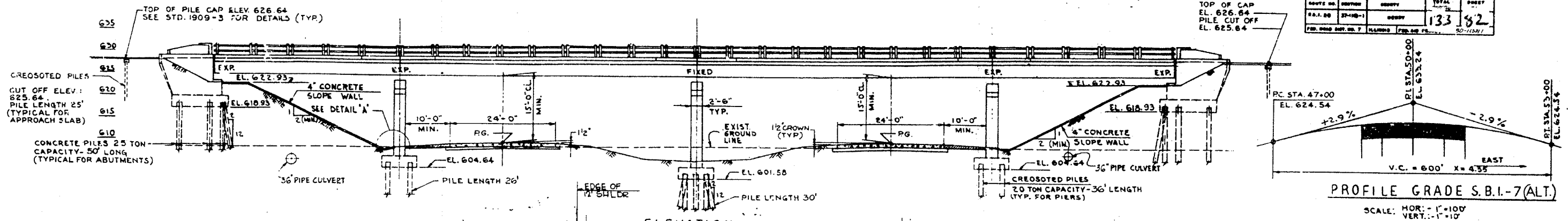


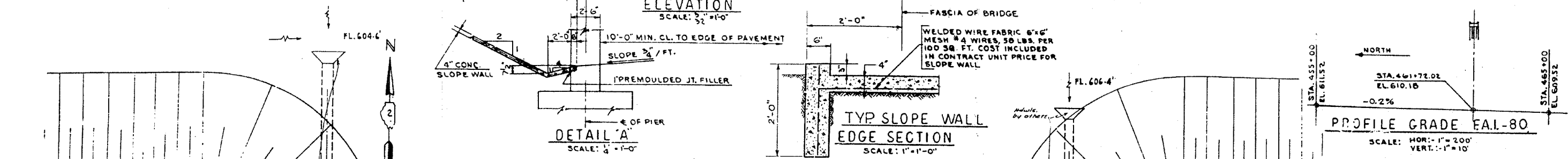
B.M. - R.R. SPIKE IN POWER POLE
173' LT F.A.I. 80 STA. 461+25 EL. 609.00

NOTE: PRECORE HOLES IN EMBANKMENTS
FOR CONCRETE PILES IN ABUTMENTS

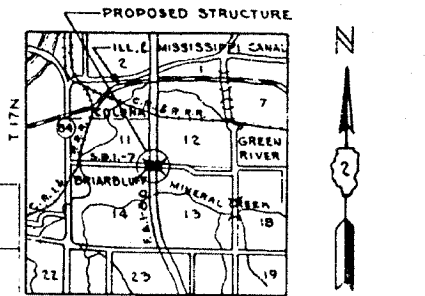
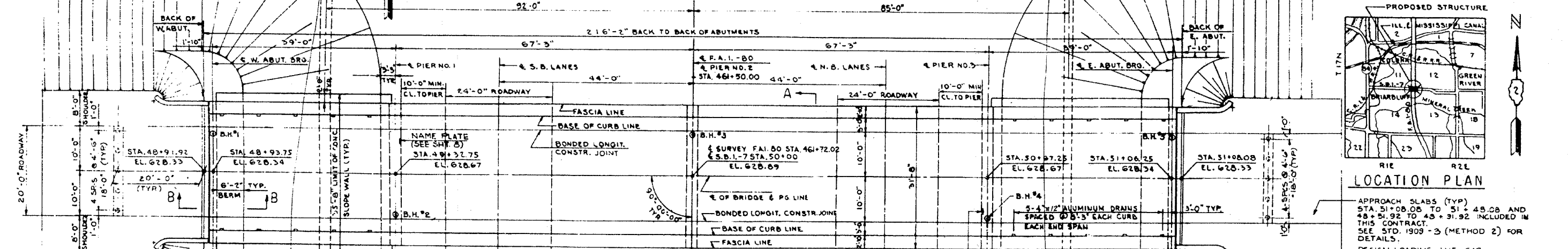
ROUTE NO.	SECTION	SHEET	TOTAL SHEETS
F.A.I. 80	37-11B-1	133	132
DESIGN NO.	DATE		
30-1521	7-15-51		



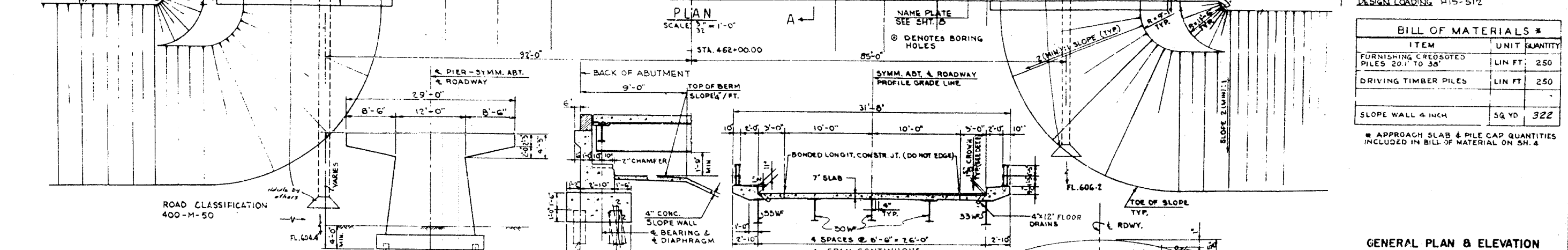
PROFILE GRADE S.B.I.-7(ALT.)
SCALE: HOR.-1"=100'
VERT.-1"=10'



PROFILE GRADE F.A.I.-80
SCALE: HOR.-1"=200'
VERT.-1"=10'



PROPOSED STRUCTURE
ILL. MISSISSIPPI CANAL
GREEN RIVER
MINERAL GREEN
R1E R2E
LOCATION PLAN
APPROACH SLABS (TYP)
STA. 51+08.08 TO 51+48.08 AND
48+54.92 TO 48+31.92 INCLUDED IN
THIS CONTRACT.
SEE STD. 1909-3 (METHOD 2) FOR
DETAILS.
DESIGN LOADING H15-S12



DECK SECTION A-A
SCALE: 3/8"=1'-0"

DETAIL B

BILL OF MATERIALS *

ITEM	UNIT	QUANTITY
FURNISHING CREOSOTED PILES 20" TO 36"	LIN FT.	250
DRIVING TIMBER PILES	LIN FT.	250
SLOPE WALL 4 INCH	SQ YD	322

* APPROACH SLAB & PILE CAP QUANTITIES INCLUDED IN BILL OF MATERIAL ON SH. 4

GENERAL PLAN & ELEVATION
F.A.I. 80 SECTION 37-11B-1
F.A.I. 80 UNDER S.B.I.-7(ALT.)
HENRY COUNTY
STATION 461 + 72.02
SCALE: AS NOTED DATE:

DE LEUW, CATHY & CO. ENGINEERS
DESIGNED BY P. J. VLAMAKIS
DRAWN BY H. HUD
CHECKED D. H. MEHLERSACKER
IN CHARGE F. S. MARTINS
APPROVED L. N. RIAN

CROWN OF RDWY. IS A CIRCULAR CURVE 10' ON EITHER
SIDE & RDWY. WITH A DROP OF 1"
REMAINDER OF RDWY. TO BASE LINE OF CURB
SLOPES O.E. PER FOOT.