

BM #2 - RR SPIKE IN PP @ SE QUAD OF WILLOW RD & US 52.
32.63' LT, ELEV = 928.22

PI STA = 1438+37.95
Δ = 44° 01' 10" (LT)
D = 4° 59' 54"
R = 1,146.28'
T = 463.35'
L = 880.67'
E = 90.11'
e = 7.8%
TR = 40'
SE RUN = 200'
PC STA = 1433+74.60
PT STA = 1442+55.27
SE ATTAINED STA 1432+00.60 TO STA 1434+40.60
SE REMOVED STA 1441+89.27 TO STA 1444+29.27

SEE SHEET 16 FOR
INTERSECTION DETAILS

WATERWAY INFORMATION

Drainage Area = 35 Acres Pipe Culvert, Class A, 48"			
Freq. Yr.	Q C.F.S.	Headwater Due to Culvert Elev. - ft.	Headwater Due to Weir Elev. - ft.
		Prop.	Prop.
10	53	913.18	916.56
50	74	913.92	916.82
100	86	914.40	916.97
500	119	916.25	917.32

SEC 21, T24N, R7E, 4TH PM
DONALD KLUCK

F.A.P. RTE.	SECTION	COUNTY	TOTAL SHEETS	SHEET NO.
17	16-T	CARROLL	47	13
STA. 1430+00		TO STA. 1448+00		
FED. ROAD DIST. NO.		ILLINOIS		FED. AID PROJECT

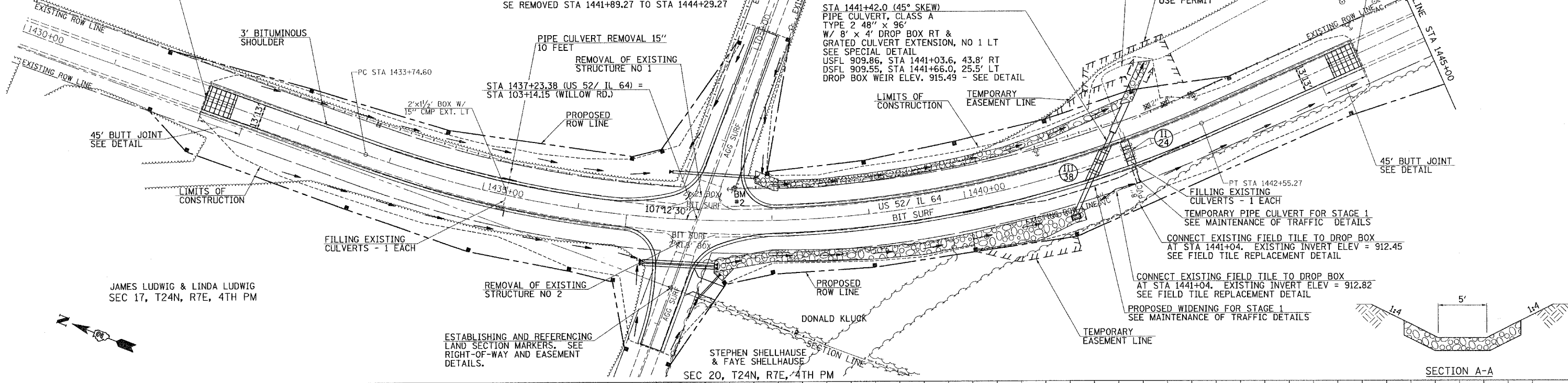
CONTRACT NO. 64897

SECTION 16-T
ENDS
STA 1444+29.27

NOTE: ON THE RIGHT SIDE OF US 52 NEAR WILLOW ROAD.
TRANSITION FROM 2' WIDE DITCH TO MATCH
DOUBLE PIPE CULVERT END SECTIONS OVER A
DISTANCE OF 25'.

SEC 16, T24N, R7E, 4TH PM
DONALD KLUCK

SECTION 16-T
BEGINS
STA 1432+00.60

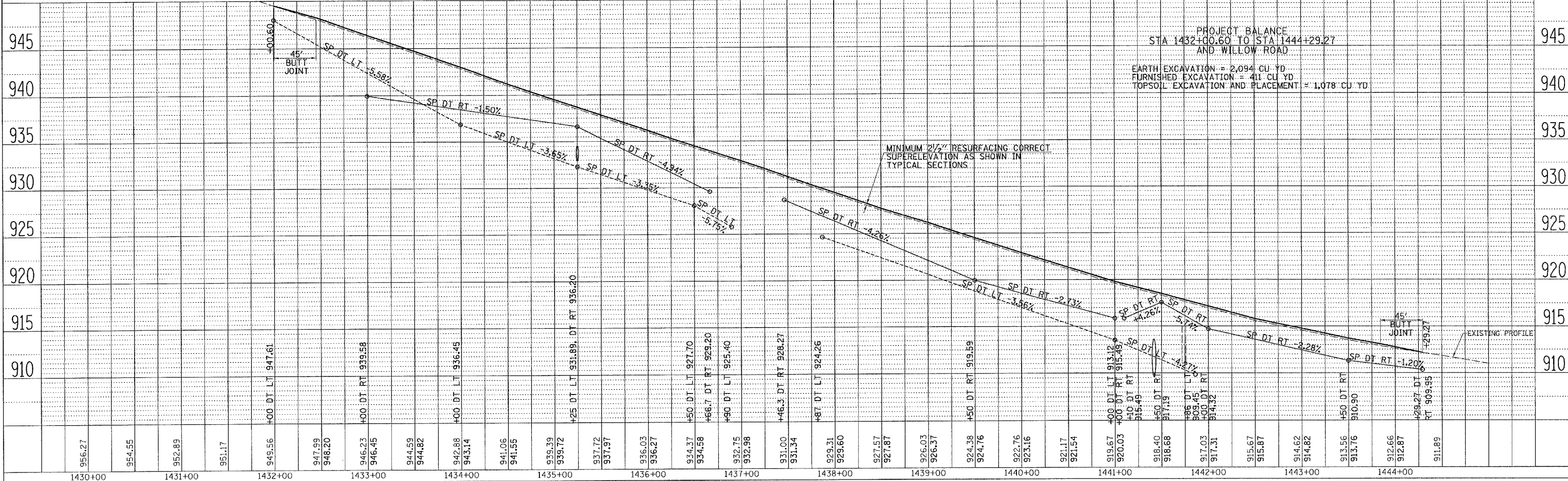


JAMES LUDWIG & LINDA LUDWIG
SEC 17, T24N, R7E, 4TH PM

ESTABLISHING AND REFERENCING
LAND SECTION MARKERS. SEE
RIGHT-OF-WAY AND EASEMENT
DETAILS.

SEC 20, T24N, R7E, 4TH PM

SECTION A-A



ILLINOIS ROUTE 64, STA 1430+00 TO STA 1448+00