

BM #2 - RR SPIKE IN PP SE QUAD OF WILLOW RD & US 52.  
32.63' LT, ELEV = 928.22

# RIGHT-OF-WAY AND EASEMENT DETAILS

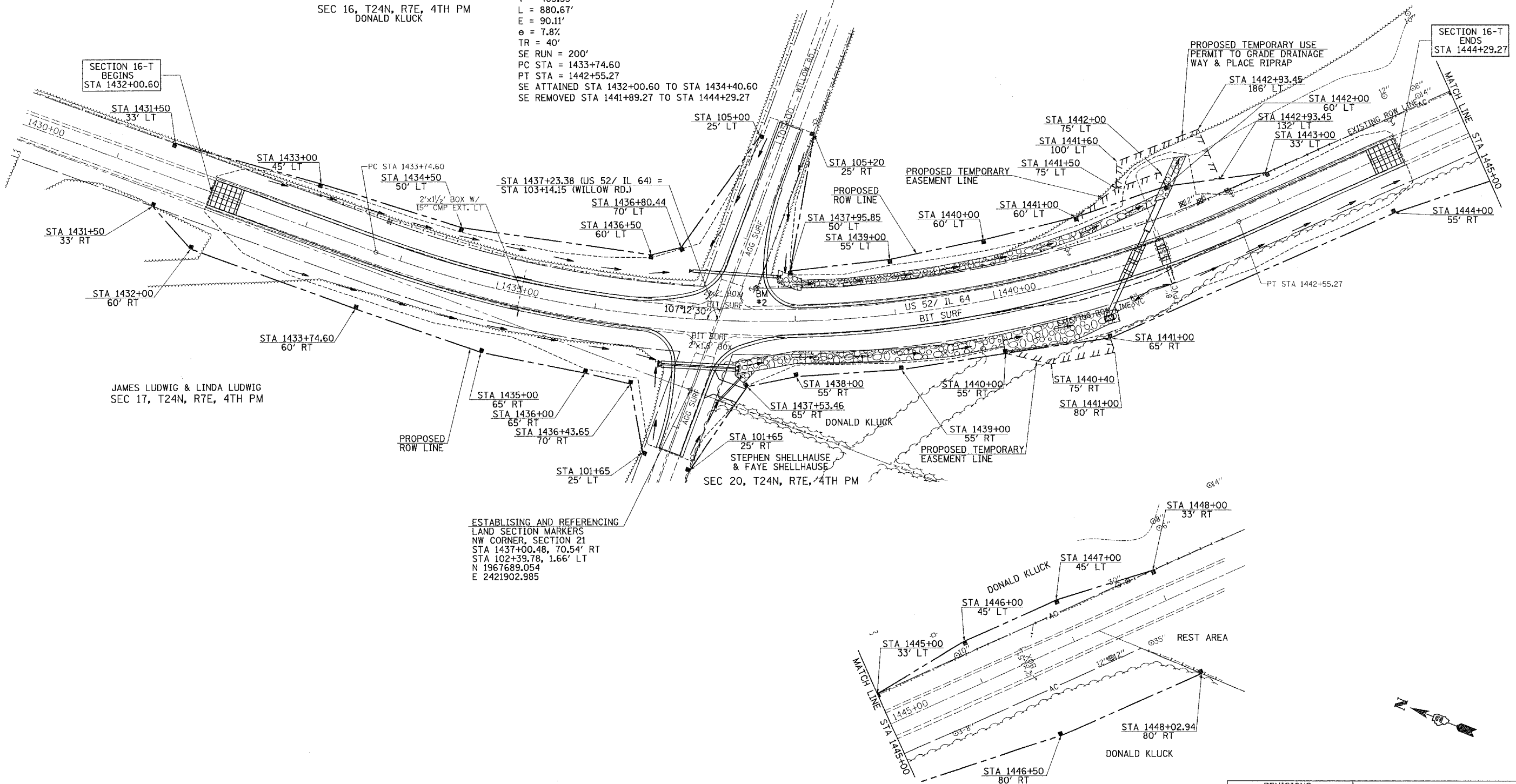
F.A.P. RTE.	SECTION	COUNTY	TOTAL SHEETS	SHEET NO.
17	16-T	CARROLL	47	15
STA. 1430+00		TO STA. 1448+00		
FED. ROAD DIST. NO.		ILLINOIS FED. AID PROJECT		

**CONTRACT NO. 64897**

SEC 16, T24N, R7E, 4TH PM  
DONALD KLUCK

PI STA = 1438+37.95  
 $\Delta = 44^\circ 01' 10''$  (LT)  
 $D = 4^\circ 59' 54''$   
 $R = 1,146.28'$   
 $T = 463.35'$   
 $L = 880.67'$   
 $E = 90.11'$   
 $e = 7.8\%$   
 $TR = 40'$   
 SE RUN = 200'  
 PC STA = 1433+74.60  
 PT STA = 1442+55.27  
 SE ATTAINED STA 1432+00.60 TO STA 1434+40.60  
 SE REMOVED STA 1441+89.27 TO STA 1444+29.27

SEC 21, T24N, R7E, 4TH PM  
DONALD KLUCK



SECTION 16-T  
BEGINS  
STA 1432+00.60

SECTION 16-T  
ENDS  
STA 1444+29.27

JAMES LUDWIG & LINDA LUDWIG  
SEC 17, T24N, R7E, 4TH PM

SEC 20, T24N, R7E, 4TH PM

ESTABLISHING AND REFERENCING  
LAND SECTION MARKERS  
NW CORNER, SECTION 21  
STA 1437+00.48, 70.54' RT  
STA 102+39.78, 1.66' LT  
N 1967689.054  
E 2421902.985

REVISIONS	
NAME	DATE

ILLINOIS DEPARTMENT OF TRANSPORTATION

FAP ROUTE 17  
RIGHT-OF-WAY AND  
EASEMENT DETAILS

SCALE: VERT.      DRAWN BY TJD  
 HORIZ.              CHECKED BY AWM  
 DATE 8/10/2006