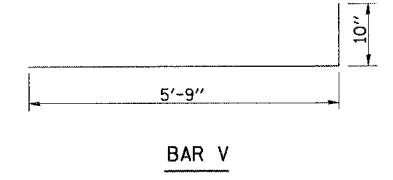
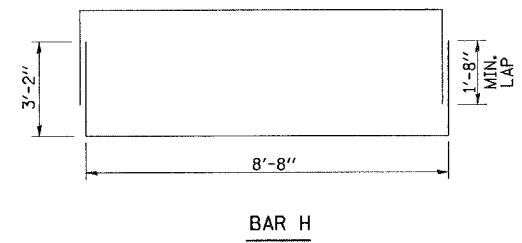


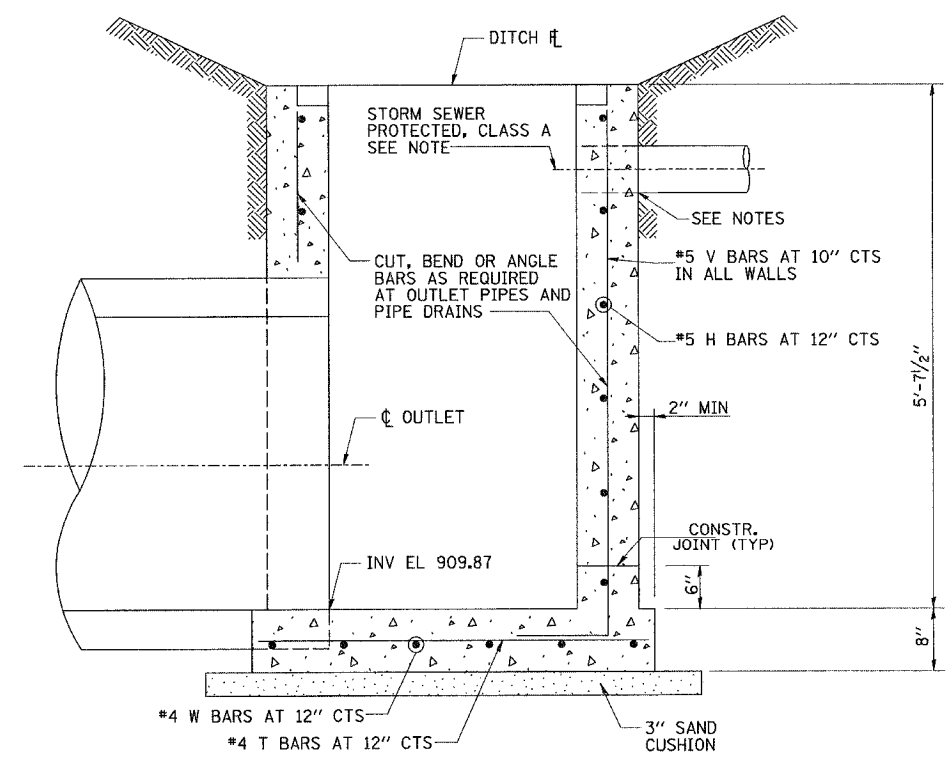
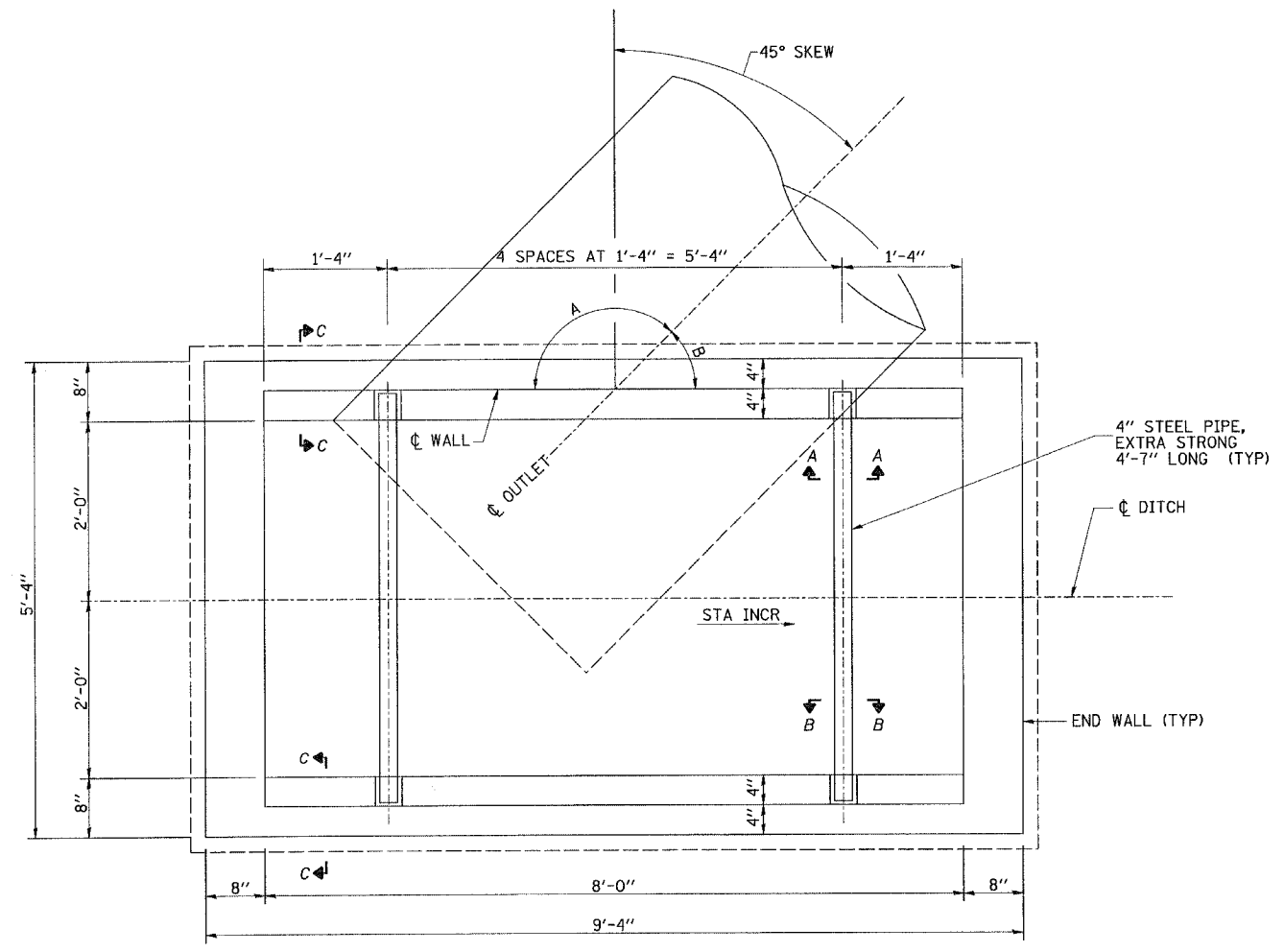
F.A.P. RTE.	SECTION	COUNTY	TOTAL SHEETS	SHEET NO.
17	16-T	CARROLL	47	20
FED. ROAD DIST. NO.		ILLINOIS FED. AID PROJECT		

CONTRACT NO. 64897

STATION	OFFSET	OUTLET SIZE	SKEW	A	B	INV ELEV	DITCH #	CONCRETE 1 DROP STR CU YD	REINF BARS - 1 DROP STR								BARS 1 DROP STR POUND	REMARKS
									#5 H - BARS		#5 V - BARS		#4 T - BARS		#4 W - BARS			
									LGTH	NO	LGTH	NO	LGTH	NO	LGTH	NO		
1441+04.2	45.8' RT	48" RCCP	45° LF	135°	45°	909.87	915.49	4.6	15'-0"	12	6'-9"	32	5'-5"	10	9'-5"	7	490	



NOTE: STEEL PIPE SHALL CONFORM TO ASTM A53 GRADE B OR ASTM A501.
 ALL STEEL PLATES SHALL CONFORM TO THE REQUIREMENTS OF AASHTO M 270, GRADE 50.
 BOLTS AND NUTS SHALL CONFORM TO THE REQUIREMENTS OF ASTM DESIGNATION A 307.
 ALL BOLTS, NUTS, WASHERS AND LOCK WASHERS SHALL BE GALVANIZED ACCORDING TO AASHTO M 232.
 ALL PLATES AND PIPES SHALL BE GALVANIZED AFTER SHOP FABRICATION ACCORDING TO AASHTO M 111 AND ASTM A 385.
 CALCULATED WEIGHT OF STEEL = 370 LBS.
 STORM SEWER PROTECTED, CLASS A, SHALL BE CONNECTED TO THE PROPOSED DROP BOX AT THE LOCATION AND INVERTS AS DIRECTED BY THE ENGINEER.
 ALL WORK AND MATERIAL INCORPORATED INTO THE CONSTRUCTION OF THE CULVERT DROP BOX SHALL BE PAID FOR AT THE CONTRACT UNIT PRICE EACH FOR "CULVERT DROP BOX".



REVISIONS	
NAME	DATE

ILLINOIS DEPARTMENT OF TRANSPORTATION

FAP ROUTE 17
 CULVERT DROP BOX DETAILS
 STA 1441+04.2

DRAWN BY TAC
 CHECKED BY BAN

DATE 8/10/2006