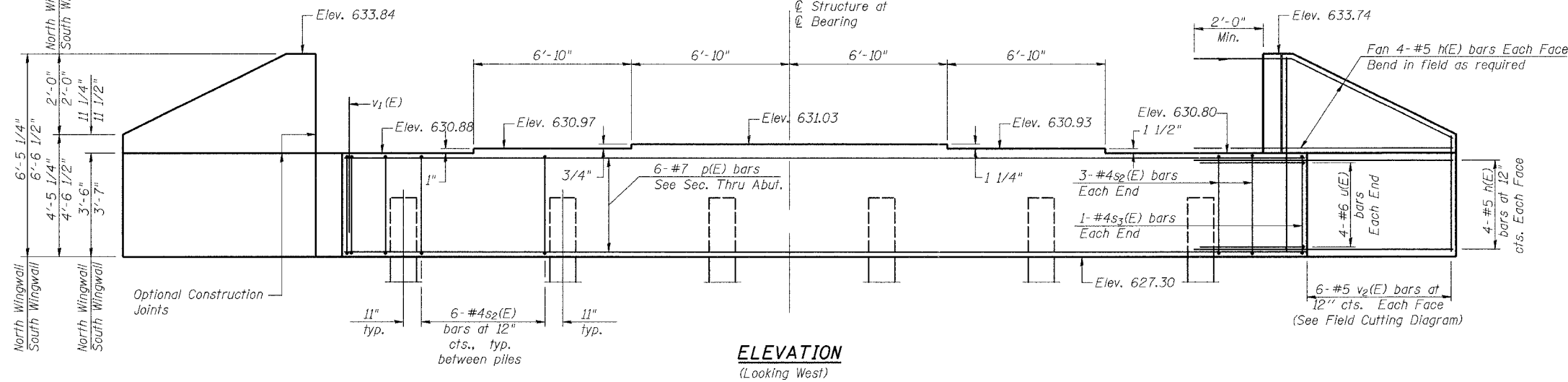


STATE OF ILLINOIS  
DEPARTMENT OF TRANSPORTATION

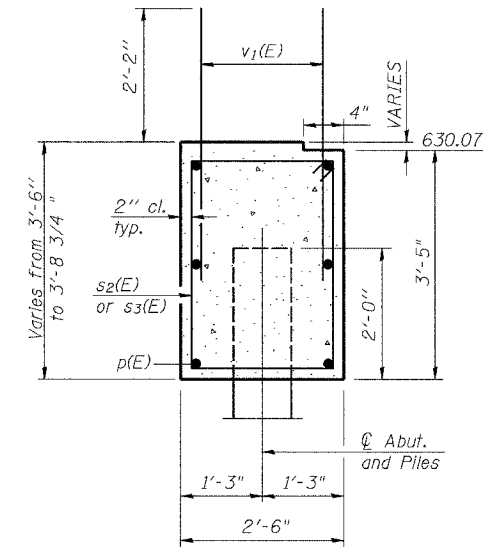
ROUTE NO.	SECTION	COUNTY	SHEET	NO.	SHEET NO. 10
FAS 2247	13X-BR-1	BUREAU	51	22	19 SHEETS
FED. ROAD DIST. NO. 7		ILLINOIS	FED. AID PROJECT-		

Contract #64938

Notes: Pour steps monolithically with cap.  
Reinforcement bars designated (E)  
shall be epoxy coated.



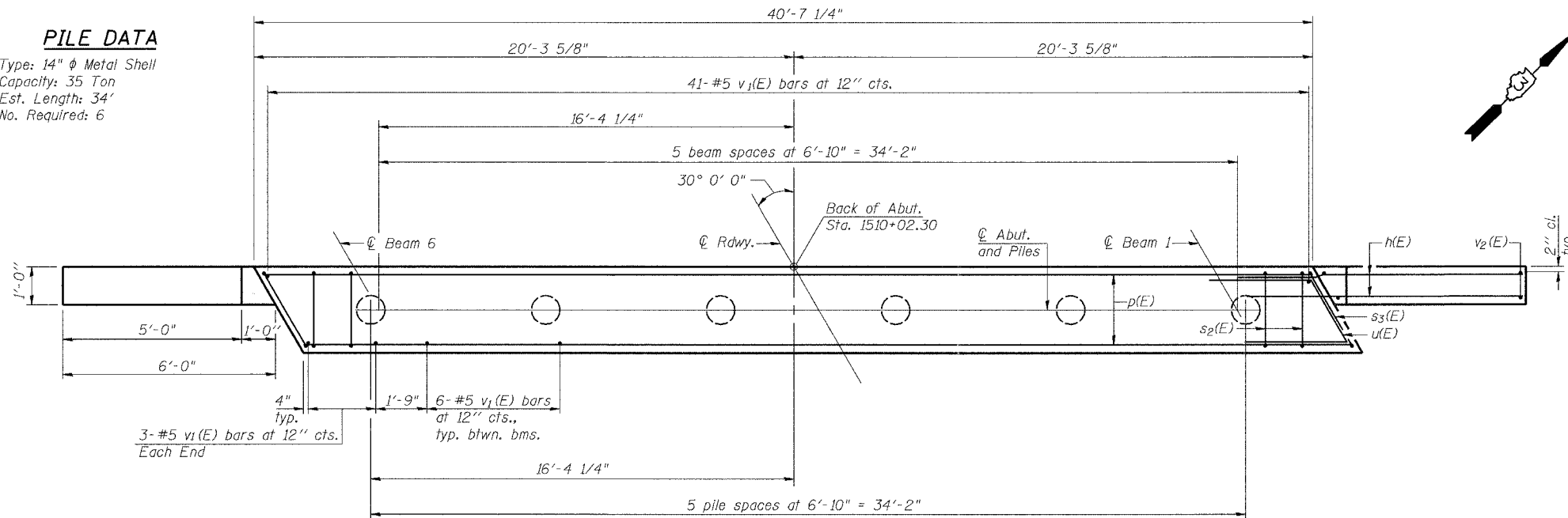
**ELEVATION**  
(Looking West)



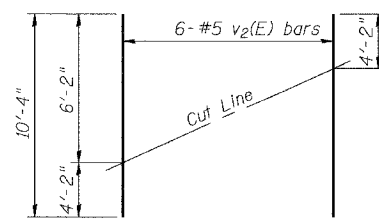
**SEC. THRU ABUT.**

**PILE DATA**

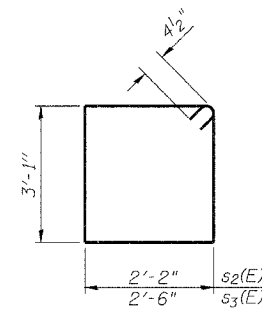
Type: 14"  $\phi$  Metal Shell  
Capacity: 35 Ton  
Est. Length: 34'  
No. Required: 6



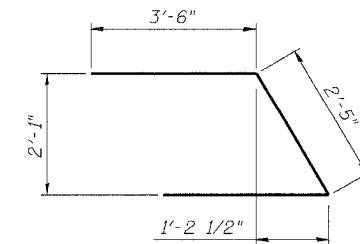
**PLAN**



**FIELD CUTTING DIAGRAM**  
Order v2(E) full length. Cut as shown and use remainder of bars in opposite face.



**BARS s2(E) & s3(E)**



**BAR u(E)**

**BILL OF MATERIAL**

Bar	No.	Size	Length	Shape
h(E)	32	#5	8'-4"	—
p(E)	6	#7	40'-4"	—
s2(E)	36	#4	11'-3"	□
s3(E)	2	#4	11'-11"	□
u(E)	8	#6	9'-5"	▽
v1(E)	77	#5	4'-4"	—
v2(E)	12	#5	10'-4"	—
Concrete Structures		Cu. Yd.	15.5	
Reinforcement Bars, Epoxy Coated		Pound	1650	
Structure Excavation		Cu. Yd.	3	
Furnishing Metal Pile Shells 14 Inch		Foot	204	
Driving and Filling Shells		Foot	204	

**WEST ABUTMENT**  
FAS ROUTE 2247 (U.S. 6)  
OVER BRUSH CREEK  
SECTION 13X-BR-1  
BUREAU COUNTY  
STA. 1510+65.80  
SN 006-0169

DESIGNED	JDA
CHECKED	JKC
DRAWN	KKP
CHECKED	JDA

AI-L

10-22-04