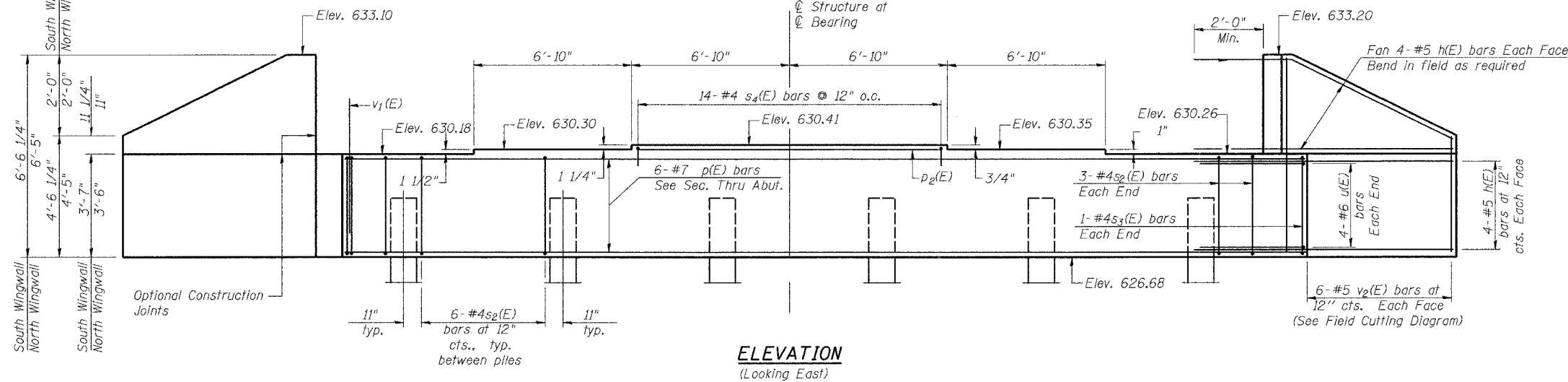


STATE OF ILLINOIS
DEPARTMENT OF TRANSPORTATION

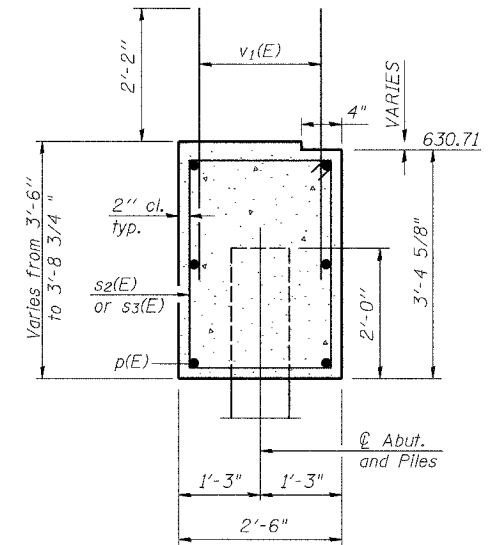
ROUTE NO.	SECTION	COUNTY	SHEET	NO.	SHEET NO. 11
FAS 2247	13X-BR-1	BUREAU	51	23	19 SHEETS
FED. ROAD DIST. NO. 7	ILLINOIS	FED. AID PROJECT-			

Contract #64938

Notes: Pour steps monolithically with cap.
Reinforcement bars designated (E)
shall be epoxy coated.



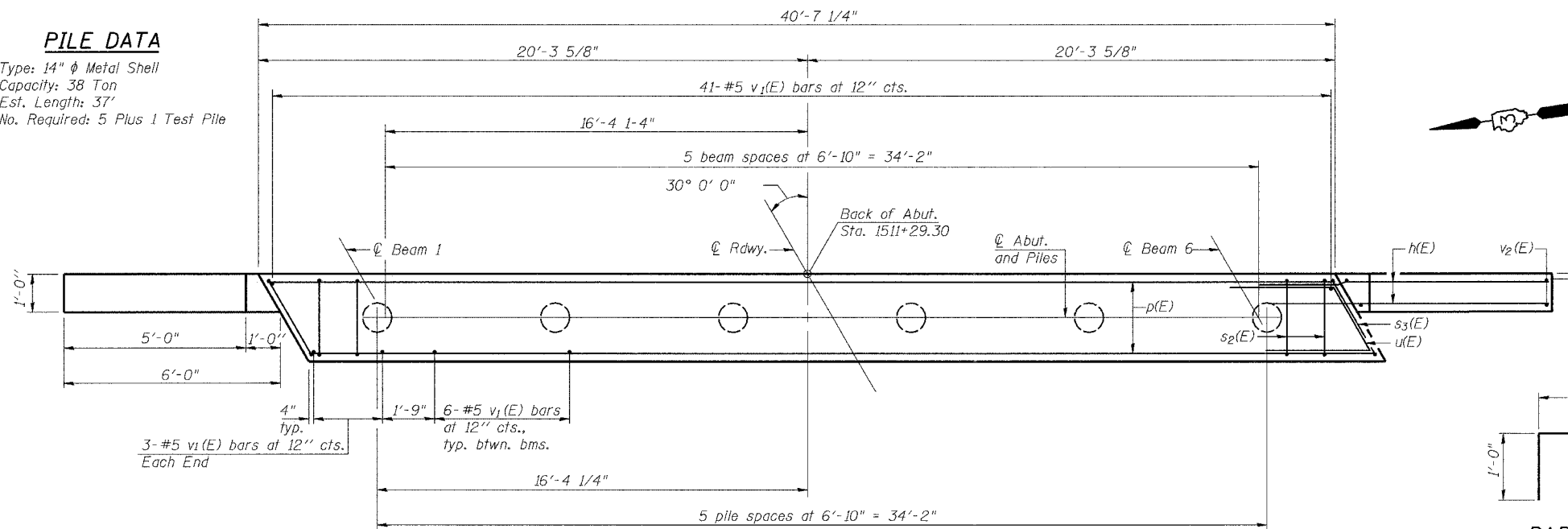
ELEVATION
(Looking East)



SEC. THRU ABUT.

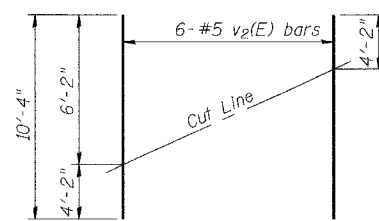
PILE DATA

Type: 14" ϕ Metal Shell
Capacity: 38 Ton
Est. Length: 37'
No. Required: 5 Plus 1 Test Pile



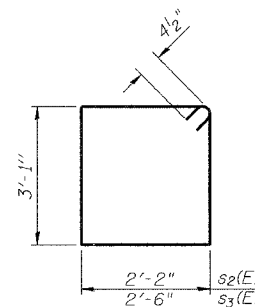
PLAN

BARS s4(E)

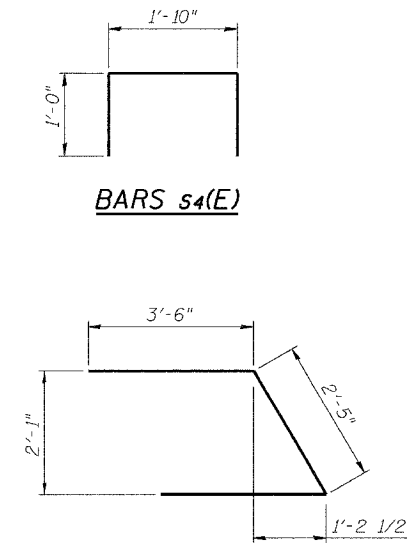


FIELD CUTTING DIAGRAM

Order v2(E) full length. Cut as shown and use remainder of bars in opposite face.



BARS s2(E) & s3(E)



BAR u(E)

BILL OF MATERIAL

Bar	No.	Size	Length	Shape
h(E)	32	#5	8'-4"	—
p(E)	6	#7	40'-4"	—
p2(E)	2	#7	13'-4"	—
s2(E)	36	#4	11'-3"	□
s3(E)	2	#4	11'-11"	□
s4(E)	14	#4	3'-10"	□
u(E)	8	#6	9'-5"	∟
v1(E)	77	#5	4'-4"	—
v2(E)	12	#5	10'-4"	—
Concrete Structures		Cu. Yd.	15.5	
Reinforcement Bars, Epoxy Coated		Pound	1740	
Structure Excavation		Cu. Yd.	8	
Furnishing Metal Pile Shells 14 Inch		Foot	185	
Driving and Filling Shells		Foot	185	
Test Pile Metal Shells		Each	1	

EAST ABUTMENT
FAS ROUTE 2247 (U.S. 6)
OVER BRUSH CREEK
SECTION 13X-BR-1
BUREAU COUNTY
STA. 1510+65.80
SN 006-0169

DESIGNED	JDA
CHECKED	JKC
DRAWN	KKP
CHECKED	JDA

AI-L

10-22-04