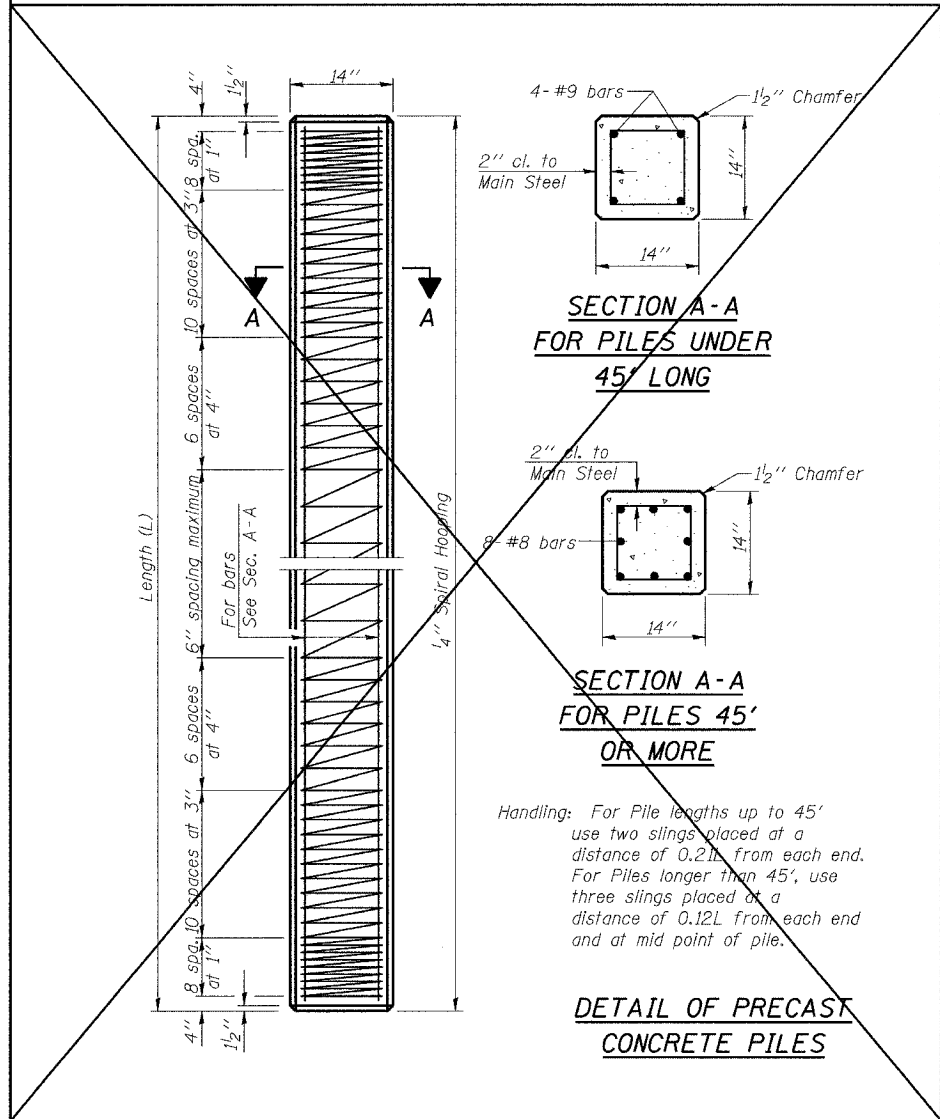


STATE OF ILLINOIS
DEPARTMENT OF TRANSPORTATION

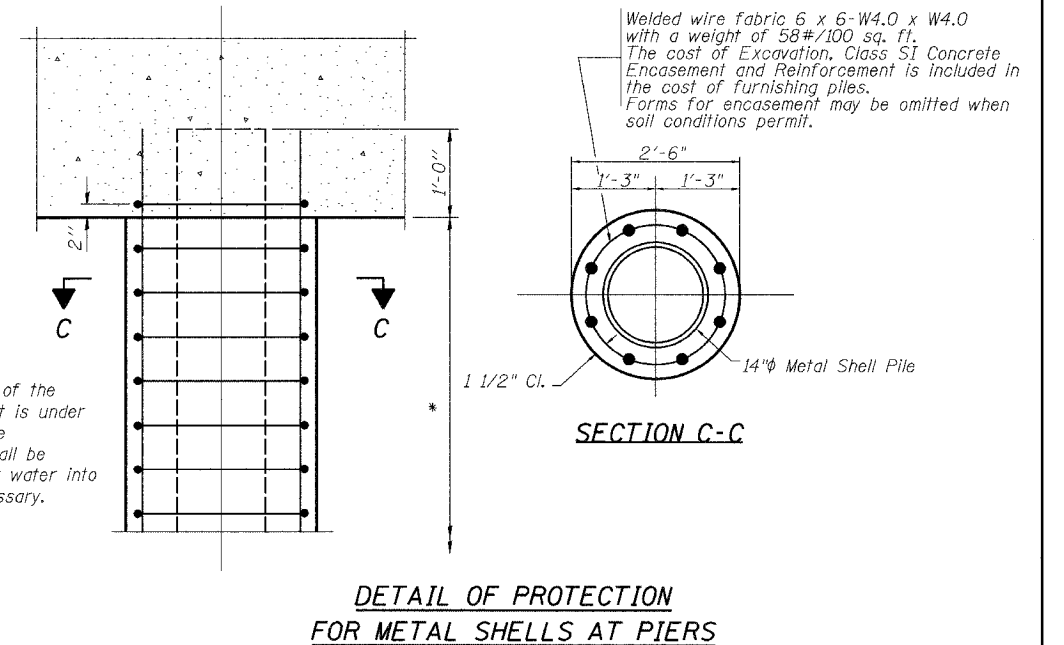
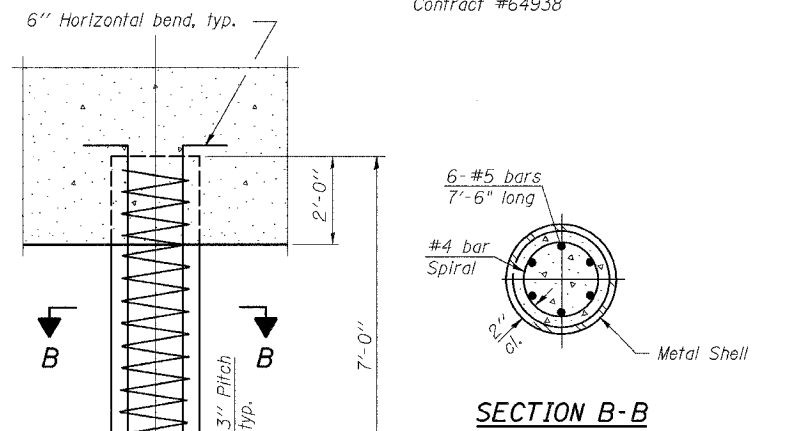
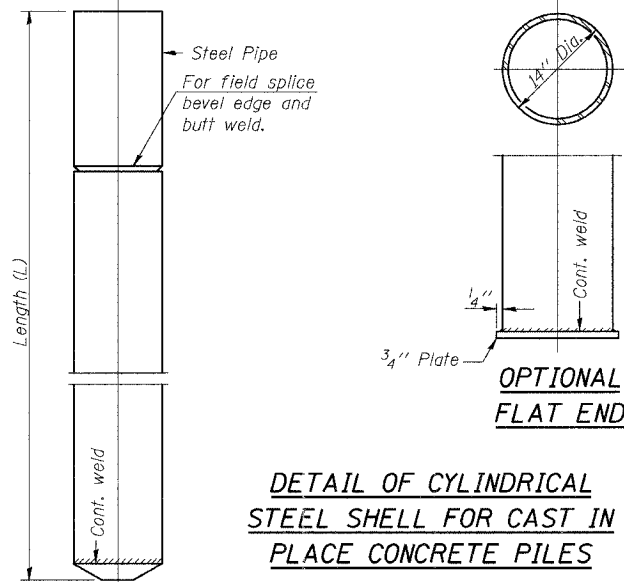
| | | | | |
|-----------------------|----------|----------|-------|------------------|
| ROUTE NO. | SECTION | COUNTY | SHEET | SHEET NO. |
| FAS 2247 | 13X-BR-1 | BUREAU | 51 | 28 |
| FED. ROAD DIST. NO. 7 | | ILLINOIS | | FED. AID PROJECT |

Contract #64938



Handling: For Pile lengths up to 45' use two slings placed at a distance of 0.2L from each end. For Piles longer than 45', use three slings placed at a distance of 0.12L from each end and at mid point of pile.

Notes:
Driving and bearing ends of pipe shall be cut square. The thickness of the shell shall be 0.250 inches with a tolerance of 5%. The shell shall be according to Article 1006.05(a) of the Standard Specifications.



| | |
|----------|-----|
| DESIGNED | -- |
| CHECKED | -- |
| DRAWN | KKP |
| CHECKED | JDA |

X-PB

10-22-04

CONCRETE PILE DETAILS
FAS ROUTE 2247 (U.S. 6)
OVER BRUSH CREEK
SECTION 13X-BR-1
BUREAU COUNTY
STA. 1510+65.80
SN 006-0169