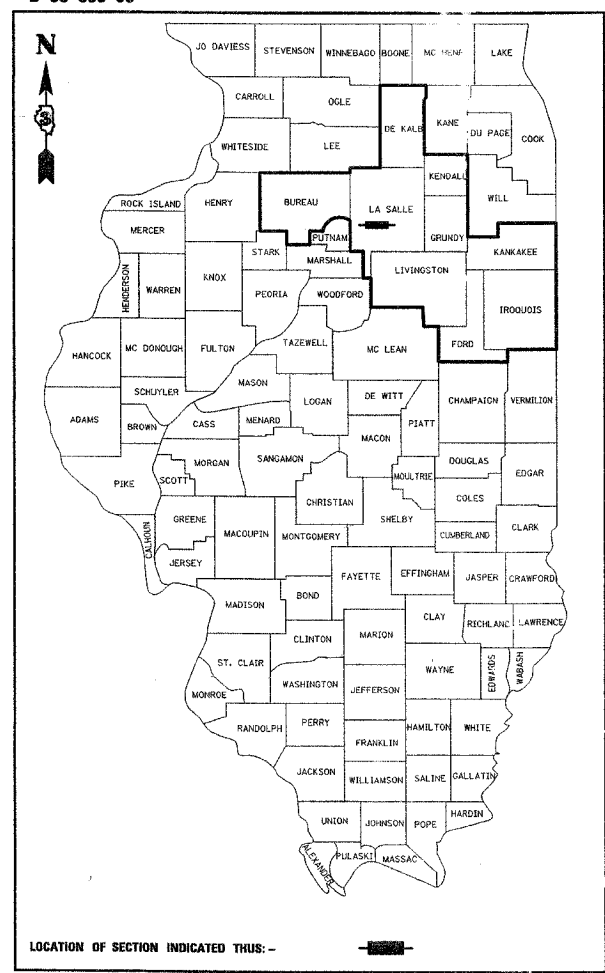


FAP RTE	SECTION	COUNTY	TOTAL SHEETS	SHEET NO.
627	(I-1) BR & I	LaSALLE	106	1
F.H.W.A. REG.		ILLINOIS	PROJECT	

P-93-032-99
D-93-038-00



LOCATION OF SECTION INDICATED THIS: -

STATE OF ILLINOIS DEPARTMENT OF TRANSPORTATION DIVISION OF HIGHWAYS

PLANS FOR PROPOSED FEDERAL AID HIGHWAY IMPROVEMENT

**F.A.P. RTE. 627 (IL RTE. 71)
SECTION (I-1) BR & I
LaSALLE COUNTY
C-93-141-03
PROJECT F-0627 (012)**

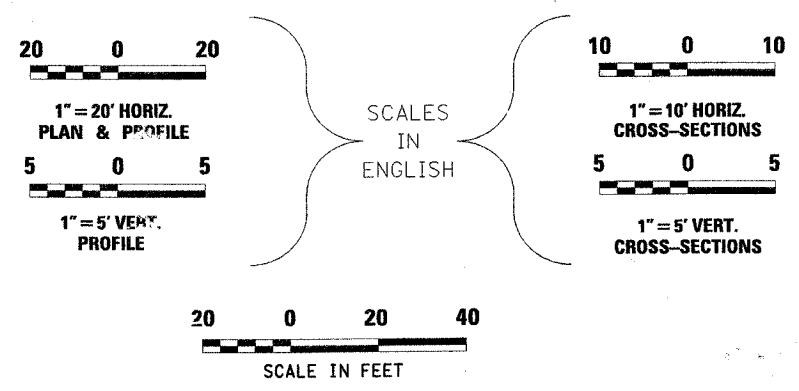
**THREE CULVERT REPLACEMENTS AND
ONE RETAINING WALL PLACEMENT, AT
VARIOUS LOCATIONS IN STARVED ROCK
STATE PARK EAST OF IL 178**

INDEX OF SHEETS

- 1 COVER SHEET
- 2 GENERAL NOTES
- 3-5 SUMMARY OF QUANTITIES
- 6-8 TYPICAL SECTIONS
- 9-12 SCHEDULE OF QUANTITIES
- 13-15 TRANSIT LINE LOCATION & TIES
- 16-18 PLAN & PROFILE SHEETS
- 19-20 SIGNAGE
- 21-24 DETOUR MAPS
- 25-28 LIMITS OF CONSTRUCTION, EROSION CONTROL AND TREE REMOVAL PLAN
- 29-34 CULVERT @ STA. 393+00.00
- 35-48 S. N. 050-C804
- 49-60 S. N. 050-W004
- 61-86 S. N. 050-O239
- 87-89 DISTRICT DETAILS
- 90 DISTRICT DETAIL AND DETAILS
- 91-106 CROSS SECTIONS

STANDARDS

000001-04	602401-01	701011-01
001001	604001-02	701201-02
280001-02	606001-02	701301-02
285001-01	609006-02	701306-01
353001-02	630001-06	701311-02
420401-05	631031-05	701326-02
515001-02	635006-02	702001-06
601101	635011-01	780001-01
602301-01	701001-01	781001-02
602306-01	701006-02	BLR 21-6



FULL SIZE PLANS HAVE BEEN PREPARED USING STANDARD ENGINEERING SCALES, REDUCED SIZED PLANS WILL NOT CONFORM TO STANDARD SCALES, IN MAKING MEASUREMENTS ON REDUCED PLANS, THE ABOVE SCALES MAY BE USED.

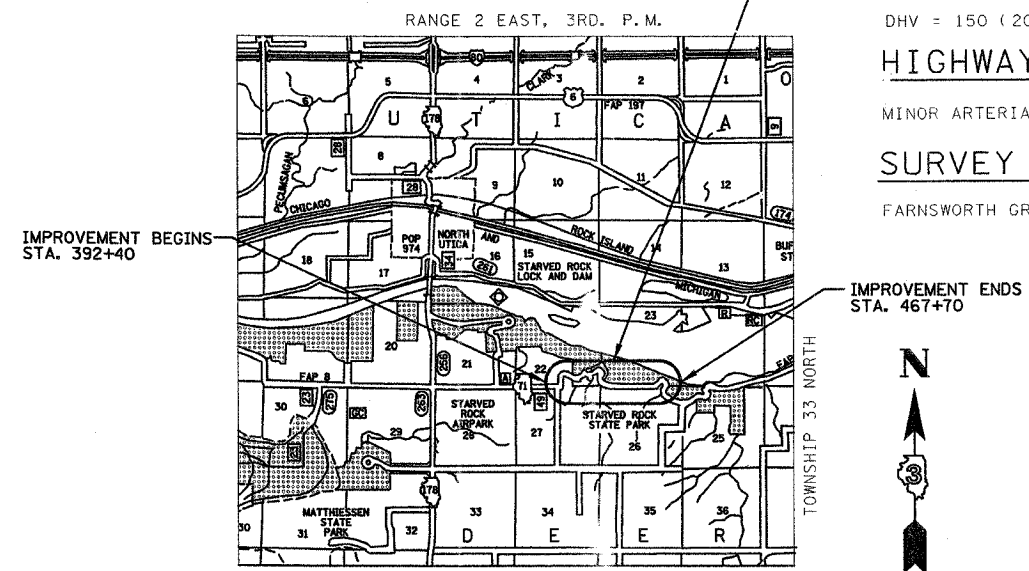
MICROFILMED _____
REEL NUMBER _____
AWARDED _____
RESIDENT ENGINEER _____
AS BUILT CHANGES WERE MADE ON THE FOLLOWING SHEETS _____

JULIE 800-892-0123
DISTRICT NO. (815) 434-6131
PROJECT ENGINEER: DANIEL J. DRAPER
UNIT: PA BRABOY
LOCATION: DEER PARK

CONTRACT # 66372

- 1.) CULVERT @ STA. 393+00.00
- 2.) S.N. 050-C804 @ STA. 416+44.62
- 3.) CULVERT @ STA. 437+31
- 4.) S.N. 050-W004 @ STA. 462+24.35 TO STA. 464+94.66
- 5.) S.N. 050-O239 @ STA. 465+35.39

NOTE: SEE PLANS FOR LOCATION AND DETAILS



LOCATION MAP



GROSS LENGTH OF IMPROVEMENT = 7,530 FEET = (1.43 MILES)
NET LENGTH OF IMPROVEMENT = 927 FEET = (0.18 MILES)

DESIGN DESIGNATION

POSTED ADVISORY SPEED _____ MPH
ADT = 1500 (2005) 174
% SU = 1.6%
% MU = 0.8%
DHV = 150 (2005) 174

HIGHWAY CLASSIFICATION

MINOR ARTERIAL (RURAL)

SURVEY BOOK NOS.

FARNSWORTH GROUP, INC. - BOOK 2490

STATE OF ILLINOIS
DEPARTMENT OF TRANSPORTATION
DIVISION OF HIGHWAYS

SUBMITTED May 15, 2006
Mark S. Wylie
DEPUTY DIRECTOR OF HIGHWAYS, REGION ENGINEER

October 13, 2006
Mike J. Lee
ENGINEER OF DESIGN AND ENVIRONMENT

October 13, 2006
Milton R. Sees, P.E.
DIRECTOR, DIVISION OF HIGHWAYS



Mark S. Wylie Date 5/15/06
MARK S. WYLIE
ILLINOIS PROFESSIONAL ENGINEER
NO. 06 04376
EXPIRES 12/31/07



2709 McGraw Drive
Bloomington, Illinois 61704
309/663-8435, 309/363-1711 fax
PRINTED BY THE AUTHORITY OF THE STATE OF ILLINOIS