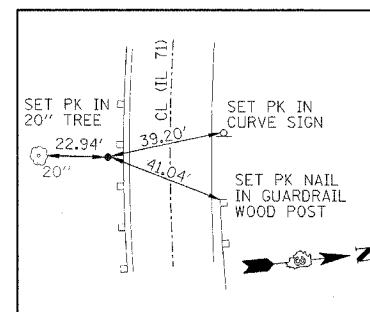
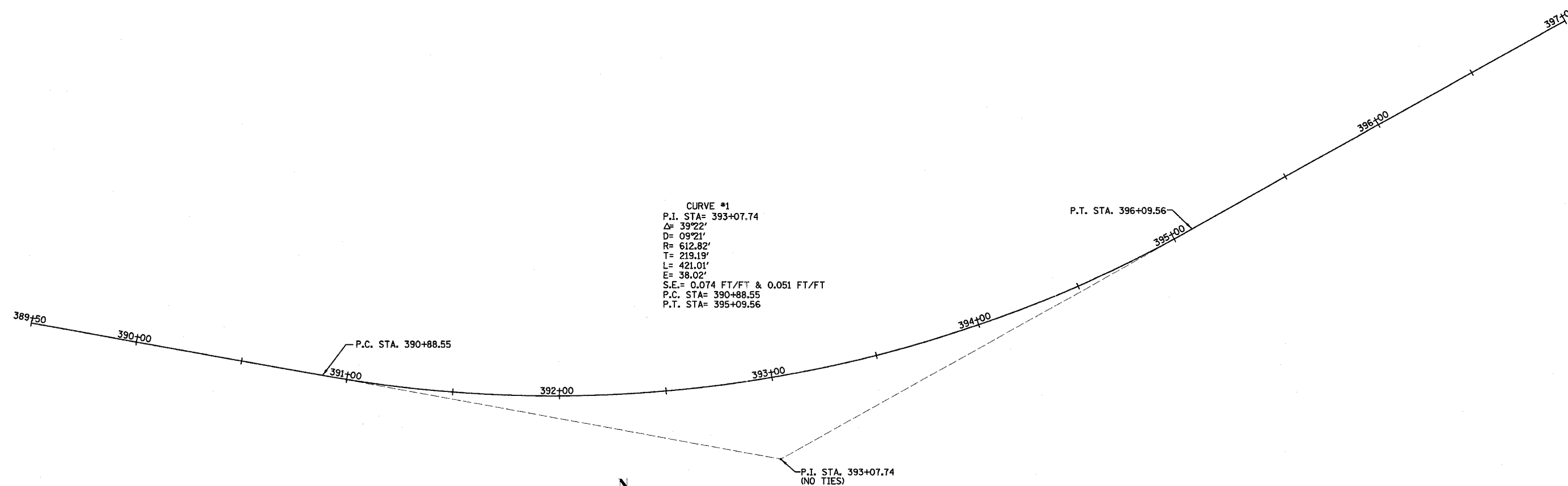
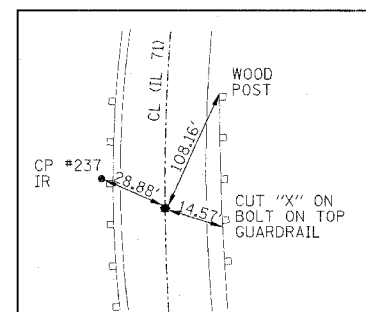


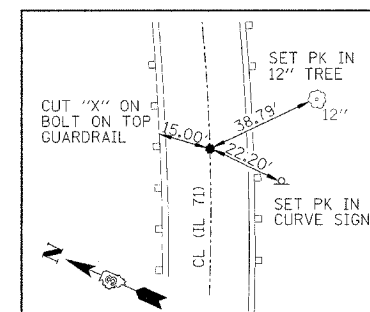
F.A.P. RTE.	SECTION	COUNTY	TOTAL SHEETS	SHEET NO.
627	(I-1) BR & I	LA SALLE	106	13
STA.	TO STA.			
FED. ROAD DIST. NO.	ILLINOIS	FED. AID PROJECT		



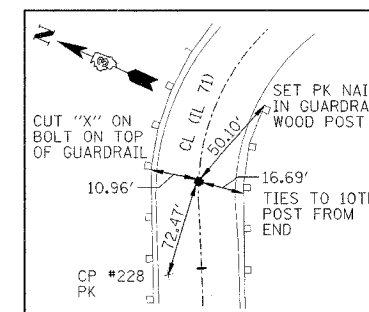
STA. 389+50.00 IR SET ON TANGENT EXTENDED



P.C. STA. 390+88.55 (CURVE #1) SPINDLE NAIL



P.T. STA. 395+09.56 (CURVE #1) SPINDLE NAIL



STA. 397+00.00 (CURVE #1) SPINDLE NAIL ON TANGENT

TRANSIT LINE LOCATION & TIES
 CULVERT @ STA. 393+00
 STA. 392+40 TO STA. 393+60

IL ROUTE 71
 OVER TRIBUTARY TO ILLINOIS RIVER
 F.A.P. ROUTE 627 - SEC. (I-1) BR & I
 LA SALLE COUNTY

DESIGNED BY MSW	 2709 McDraw Drive Bloomington, Illinois 61704 309/833-9496, 309/833-1671 fax	FILE NO. 24-6772
DRAWN BY DJM		DATE 05/12/06
CHECKED BY MSW		SHEET NO. 13 OF 106