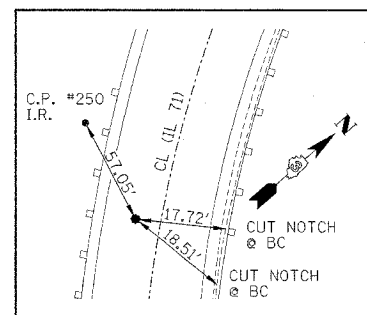
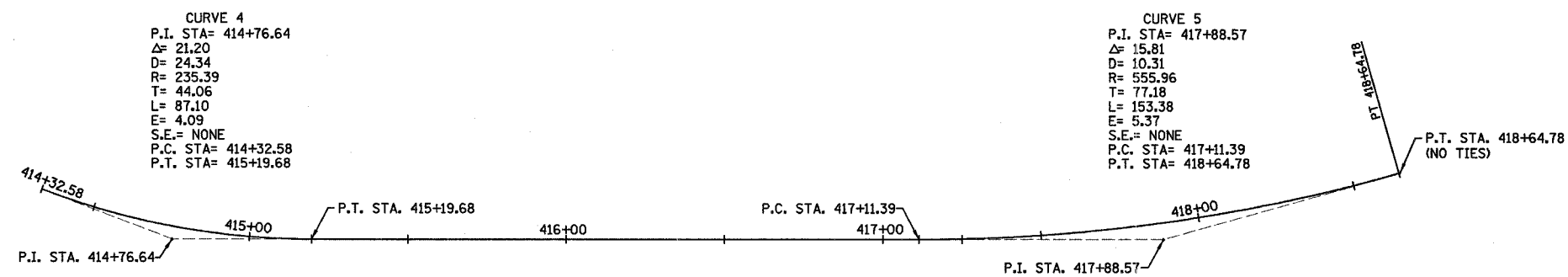
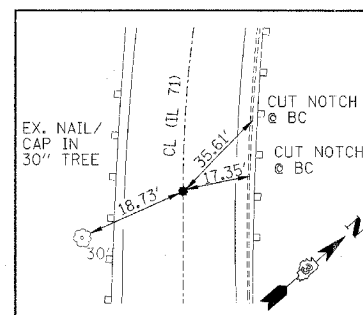


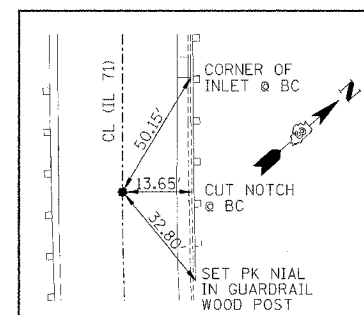
F.A.P. RTE.	SECTION	COUNTY	TOTAL SHEETS	SHEET NO.
627	(I-1) BR & I	LA SALLE	106	14
STA.	TO STA.			
FED. ROAD DIST. NO.	ILLINOIS	FED. AID PROJECT		



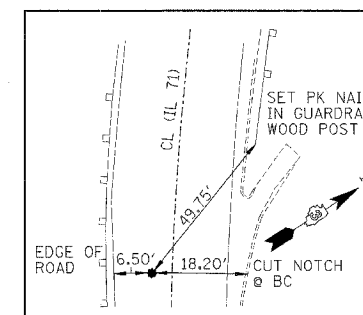
P.I. STA. 414+76.62
(CURVE #4) SPINDLE NAIL



P.T. STA. 415+19.68
(CURVE #4) SPINDLE NAIL



P.C. STA. 417+11.37
(CURVE #5) SPINDLE NAIL



P.I. STA. 417+88.58
(CURVE #5) SPINDLE NAIL

TRANSIT LINE LOCATION & TIES
 STRUCTURE 050-C804
 STA. 415+83 TO STA. 417+08

IL ROUTE 71
 OVER TRIBUTARY TO ILLINOIS RIVER
 F.A.P. ROUTE 627 - SEC. (I-1) BR & I
 LA SALLE COUNTY

DESIGNED BY MSW	<p>Farnsworth GROUP 2700 McGraw Drive Bloomington, Illinois 61704 309/893-8435, 309/893-1671 fax</p>	FILE NO. 24-6772
DRAWN BY DJM		DATE 05/12/06
CHECKED BY MSW		SHEET NO. 14 of 106