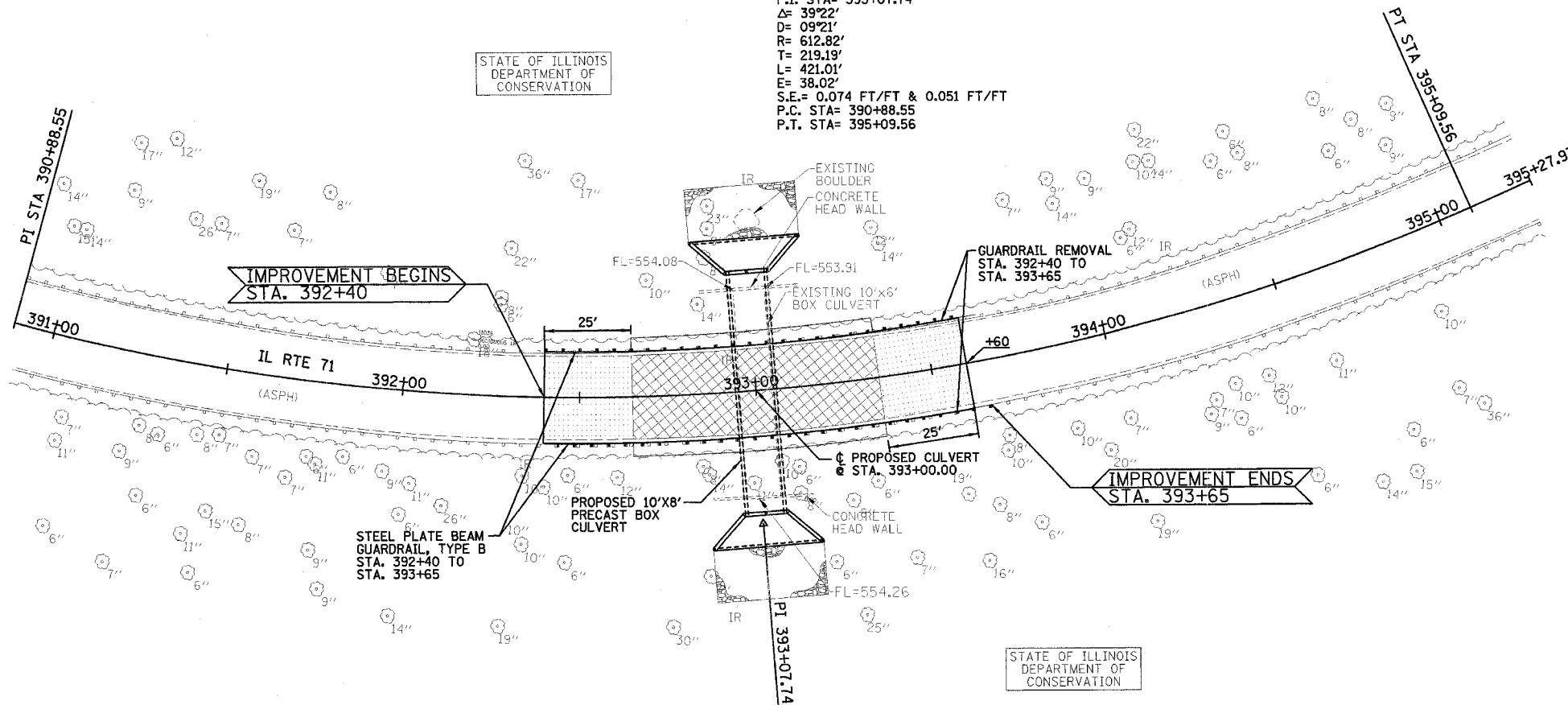


F.A.P. RTE.	SECTION	COUNTY	TOTAL SHEETS	SHEET NO.
627	(I)-D BR & I	LA SALLE	106	16
STA. 392+40		TO STA. 393+65		
FED. ROAD DIST. NO.		ILLINOIS FED. AID PROJECT		

SE 1/4 SEC. 22, T33N, R2E, 3RD P.M.
CURVE #1
 P.I. STA= 393+07.74
 $\Delta = 39^{\circ}22'$
 $D = 09^{\circ}21'$
 $R = 612.82'$
 $T = 219.19'$
 $L = 421.01'$
 $E = 38.02'$
 $S.E. = 0.074 \text{ FT/FT} \ \& \ 0.051 \text{ FT/FT}$
 P.C. STA= 390+88.55
 P.T. STA= 395+09.56

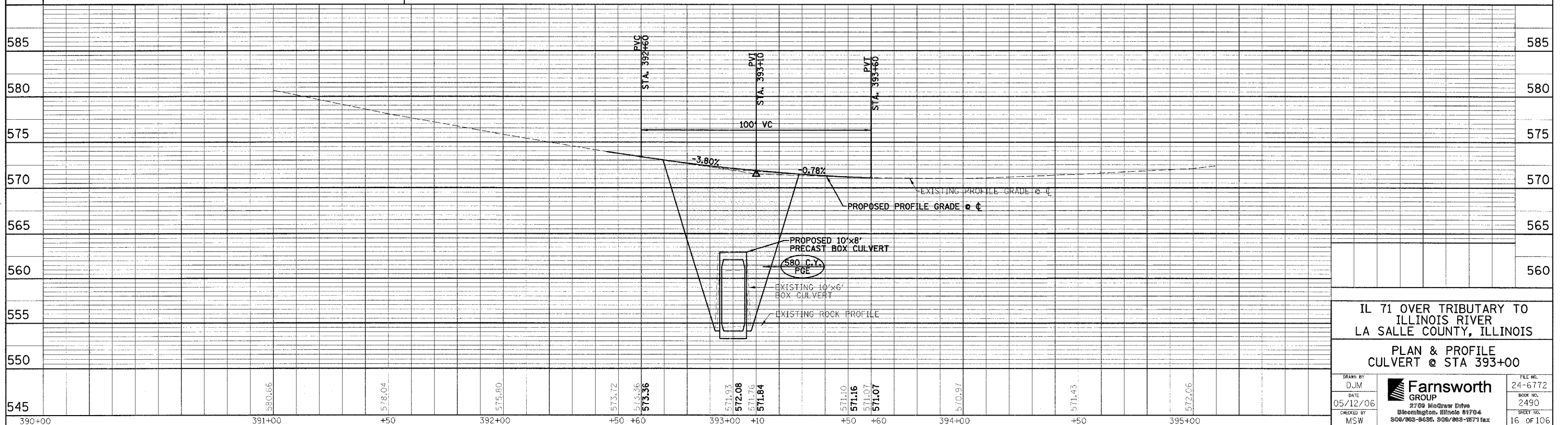
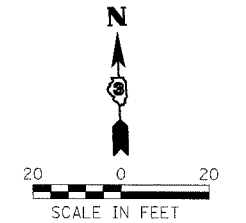
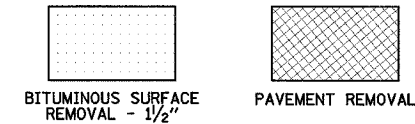
STATE OF ILLINOIS
 DEPARTMENT OF
 CONSERVATION



NOTES:

- 1.) SEE SHEETS 29-34 FOR STRUCTURAL PLANS.
- 2.) SEE SHEET 13 FOR TRANSIT LINE LOCATION & TIES.
- 3.) SEE SHEET 25 FOR TREE REMOVAL & EROSION CONTROL PLAN.
- 4.) SEE SHEET 6 FOR TYPICAL ROADWAY CROSS SECTION.
- 5.) SEE SHEETS 91-92 ROADWAY CROSS SECTIONS.

B.M. #1: TOP OF GUARDRAIL POST ON THE SOUTH SIDE OF IL RTE. 71 @ BACK CENTER OF THE 10TH POST EAST FROM THE WEST END OF THE RAIL @ STATION 400+80.31/14.61' RT., ELEVATION = 581.01.
B.M. #2: TOP OF GUARDRAIL POST ON THE SOUTH SIDE OF IL RTE. 71 @ BACK CENTER OF THE 10TH POST WEST FROM THE EAST END OF THE RAIL @ STATION 396+93.99/15.57' RT., ELEVATION = 579.55.



IL 71 OVER TRIBUTARY TO
 ILLINOIS RIVER
 LA SALLE COUNTY, ILLINOIS
PLAN & PROFILE
 @ STA 393+00

DRAWN BY DJM		FILE NO. 24-6772
DATE 05/12/06		BOOK NO. 2490
CHECKED BY MSW		SHEET NO. 16 OF 106