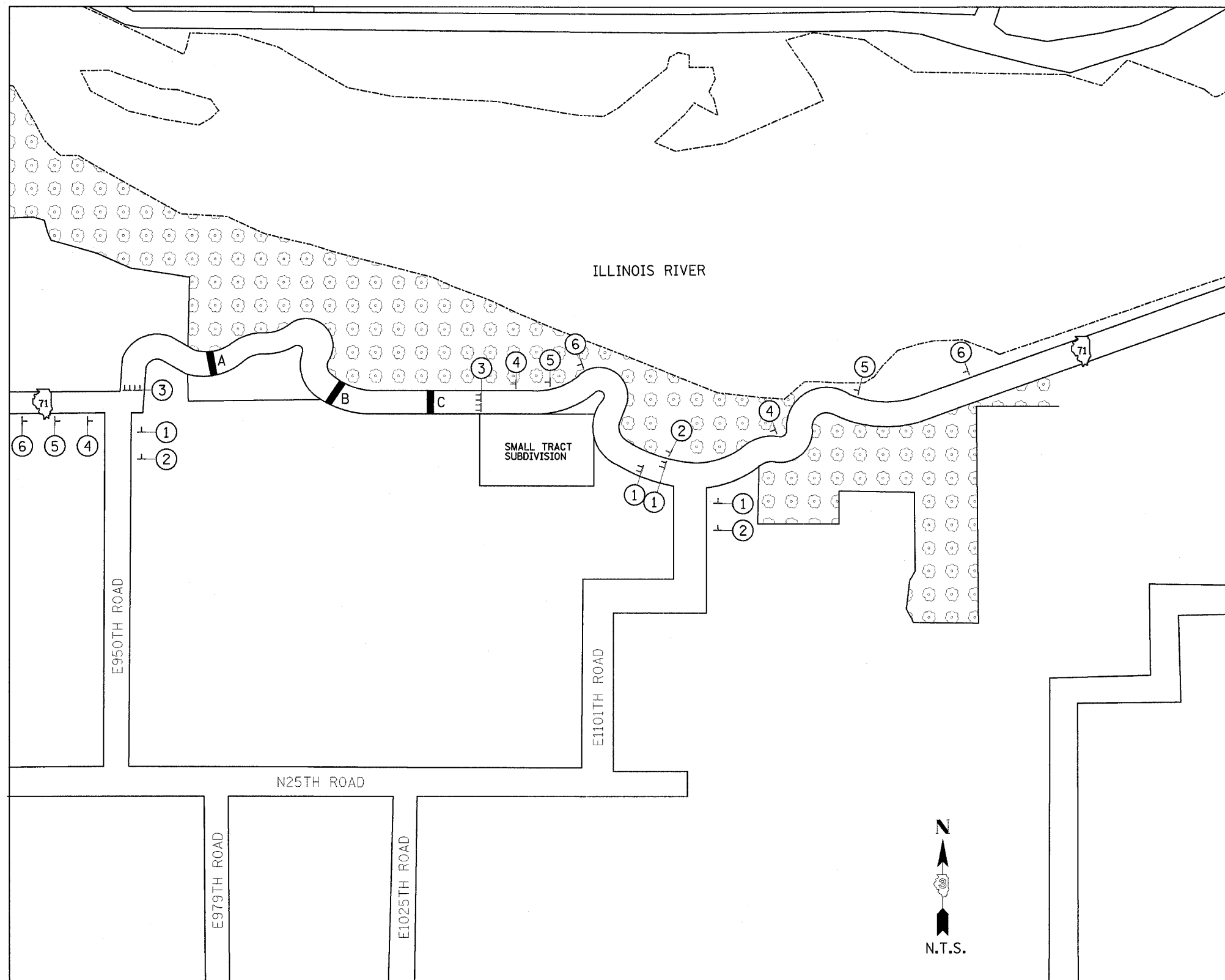


F.A.P. RTE.	SECTION	COUNTY	TOTAL SHEETS	SHEET NO.
627	(1-1) BR & I	LA SALLE	106	20
STA.	TO STA.			
FED. ROAD DIST. NO.	ILLINOIS FED. AID PROJECT			

**LEGEND**

- XXXX TO BE COVERED
- FLASHING LIGHT
- ◇ 18"x8" ORANGE FLAG
- TT TYPE III BARRICADE
- DIRECTION ARROW CHANGE

- ① ROAD CLOSED TO THRU TRAFFIC  
R11-4  
60x30
- ② ROAD WORK AHEAD  
W20-1  
36x36
- ③ ROAD CLOSED  
R11-2  
48x30
- ④ ROAD CLOSED 500 FT  
W20-3  
36x36
- ⑤ ROAD CLOSED 1000 FT  
W20-3  
36x36
- ⑥ ROAD CLOSED 1500 FT  
W20-3  
36x36



**STRUCTURE LOCATIONS**

- A.) CULVERT @ STA. 393+00.00
- B.) S.N. 050-C804 @ STA. 416+44.62
- C.) CULVERT @ STA. 437+31.00

**GENERAL NOTES:**

- 1.) ONLY SIGNS THAT ARE TO BE CHANGED OR ADDED ARE SHOWN ON THIS MAP.
- 2.) ALL SIGNS SHALL BE POST MOUNTED.
- 3.) ALL TYPE III BARRICADES SHALL BE EQUIPPED WITH 2 (TWO) TYPE A BI-DIRECTIONAL FLASHING LIGHTS.

**PHASE II SIGNAGE**

IL ROUTE 71  
OVER TRIBUTARY TO ILLINOIS RIVER  
F.A.P. ROUTE 627 - SEC. (1-1) BR & I  
LA SALLE COUNTY

DESIGNED BY MSW	<p><b>Farnsworth GROUP</b> 2700 McGraw Drive Bloomington, Illinois 61704 309/898-9036, 309/898-1671 fax</p>	FILE NO. 24-6772
DRAWN BY DJM		DATE 05/12/06
CHECKED BY MSW		SHEET NO. 20 OF 106