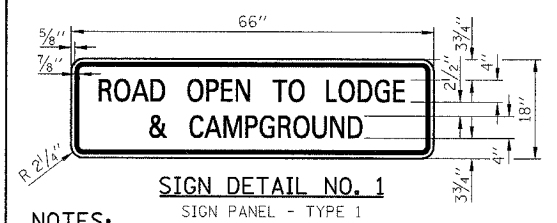
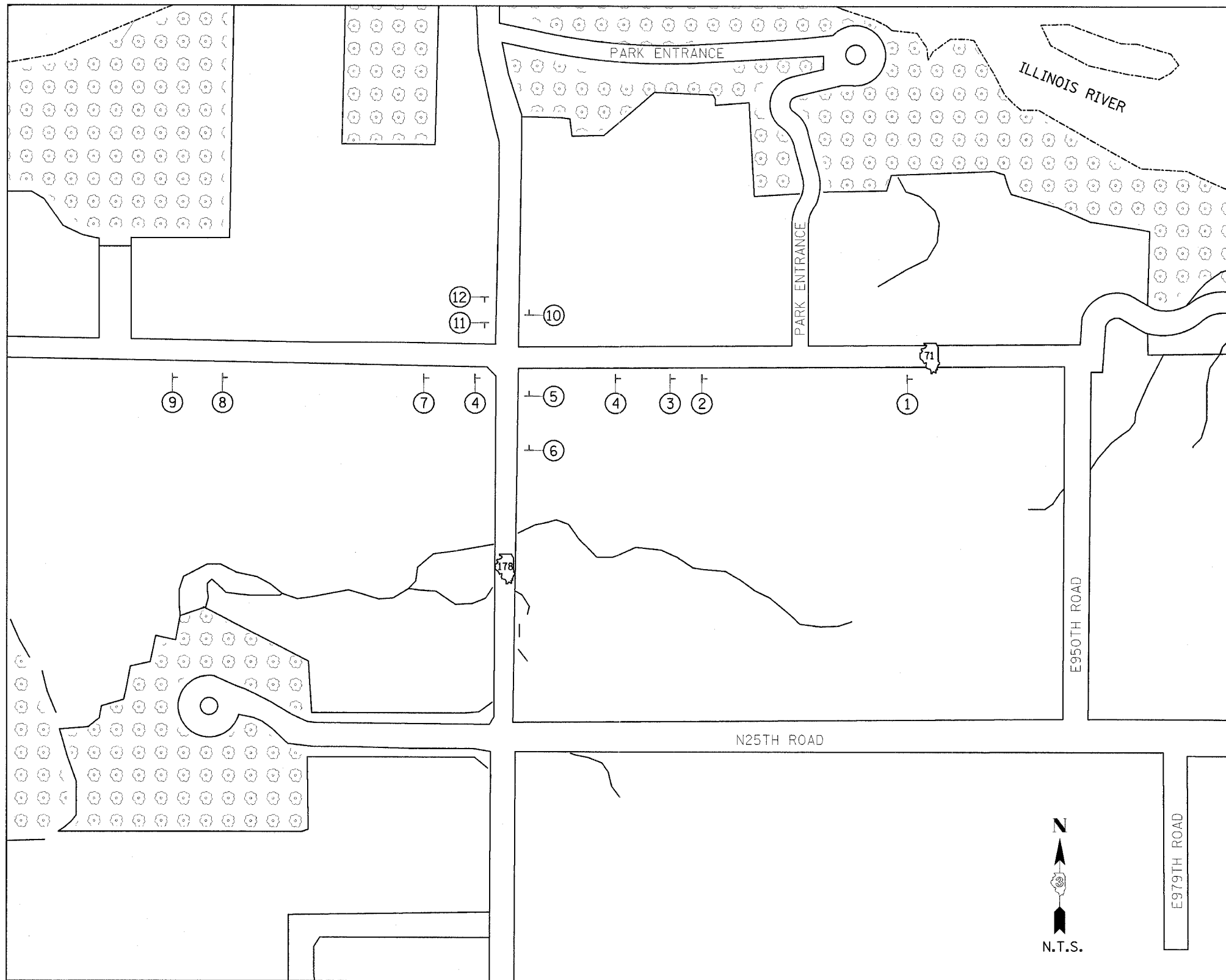
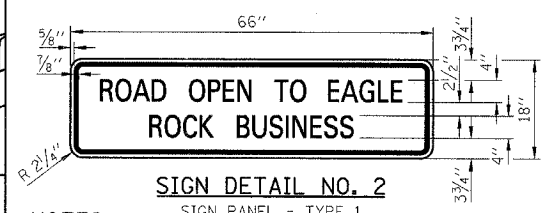


F.A.P. RTE.	SECTION	COUNTY	TOTAL SHEETS	SHEET NO.
627	(I-1) BR & I	LA SALLE	106	21
STA. TO STA.				
FED. ROAD DIST. NO.	ILLINOIS	FED. AID PROJECT		

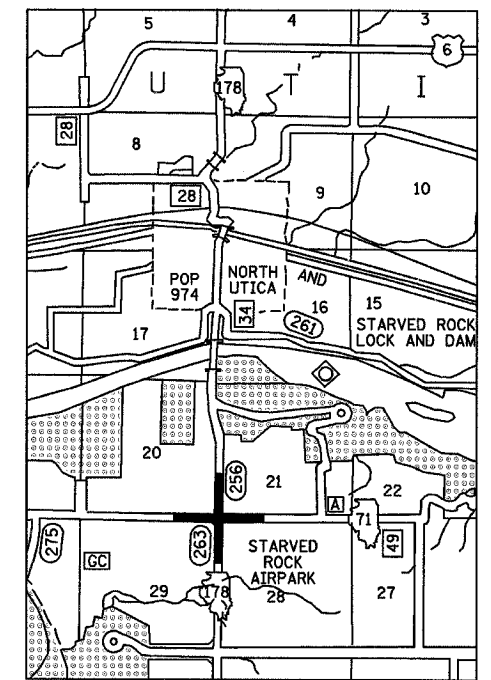
- LEGEND**
- XXXX TO BE COVERED
 - FLASHING LIGHT
 - ◇ 18"x8" ORANGE FLAG
 - TT TYPE III BARRICADE
 - DIRECTION ARROW CHANGE
1. ROAD CLOSED 1/2 MILES AHEAD LOCAL TRAFFIC ONLY
R11-3a 60x30 MI-1100 24x24
 2. STARVED ROCK 1
 3. [Symbol]
 4. ROAD CLOSED 1/2 MILES AHEAD LOCAL TRAFFIC ONLY
R11-3a 60x30 MI-1100 24x24
 5. 71
 6. ← OGLESBY OTTAWA
 7. DETOUR M4-8 24x12 M6-1 21x15
 8. DETOUR AHEAD W20-2 36x36
 9. ROAD CLOSED AHEAD W20-3 36x36
 10. DETOUR M4-8 24x12 MI-1100 24x24
 11. 71
 12. ← OTTAWA OGLESBY →



- NOTES:**
- 1.) AREA = 8.25 SQ. FT.
 - 2.) TOTAL AREA REQUIRED (3-SIGNS) = 24.75 SQ. FT.
 - 3.) 4" SERIES C LETTERS
 - 4.) LEGEND = BLACK
 - 5.) BACKGROUND = ORANGE



- NOTES:**
- 1.) AREA = 8.25 SQ. FT.
 - 2.) TOTAL AREA REQUIRED (3-SIGNS) = 24.75 SQ. FT.
 - 3.) 4" SERIES C LETTERS
 - 4.) LEGEND = BLACK
 - 5.) BACKGROUND = ORANGE



LOCATION MAP



SIGN COORDINATION:

DURING PHASE I:
UNDER THE "STARVED ROCK" SIGNS ON THE NORTH, SOUTH AND WEST LEGS OF THE INTERSECTION OF IL 71 & IL 178, PLACE SIGN DETAIL NO. 1 AND NO. 2.

DURING PHASE II:
SIGN DETAIL NO. 2 SHOULD BE RELOCATED TO IL 71 WESTBOUND, EAST OF THE IL 25 INTERSECTION.

JUNCTION IL 178 & IL 71

GENERAL NOTES:

- 1.) ONLY SIGNS THAT ARE TO BE CHANGED OR ADDED ARE SHOWN ON THIS MAP.
- 2.) ALL SIGNS TO BE POST MOUNTED.
- 3.) WHEN IL 71 TRAFFIC IS DETOURED, COVER THE WEST IL 71 ROUTE CONFIRMATION MARKERS THROUGH OTTAWA ON SOUTHBOUND IL 23.

DETOUR MAP

IL ROUTE 71
OVER TRIBUTARY TO ILLINOIS RIVER
F.A.P. ROUTE 627 - SEC. (I-1) BR & I
LA SALLE COUNTY

DESIGNED BY MSW	<p>2700 McGraw Drive Bloomington, Illinois 61704 309/983-8436, 309/983-1671 fax</p>	FILE NO. 24-6772
DRAWN BY DJM		DATE 05/12/06
CHECKED BY MSW		SHEET NO. 21 OF 106