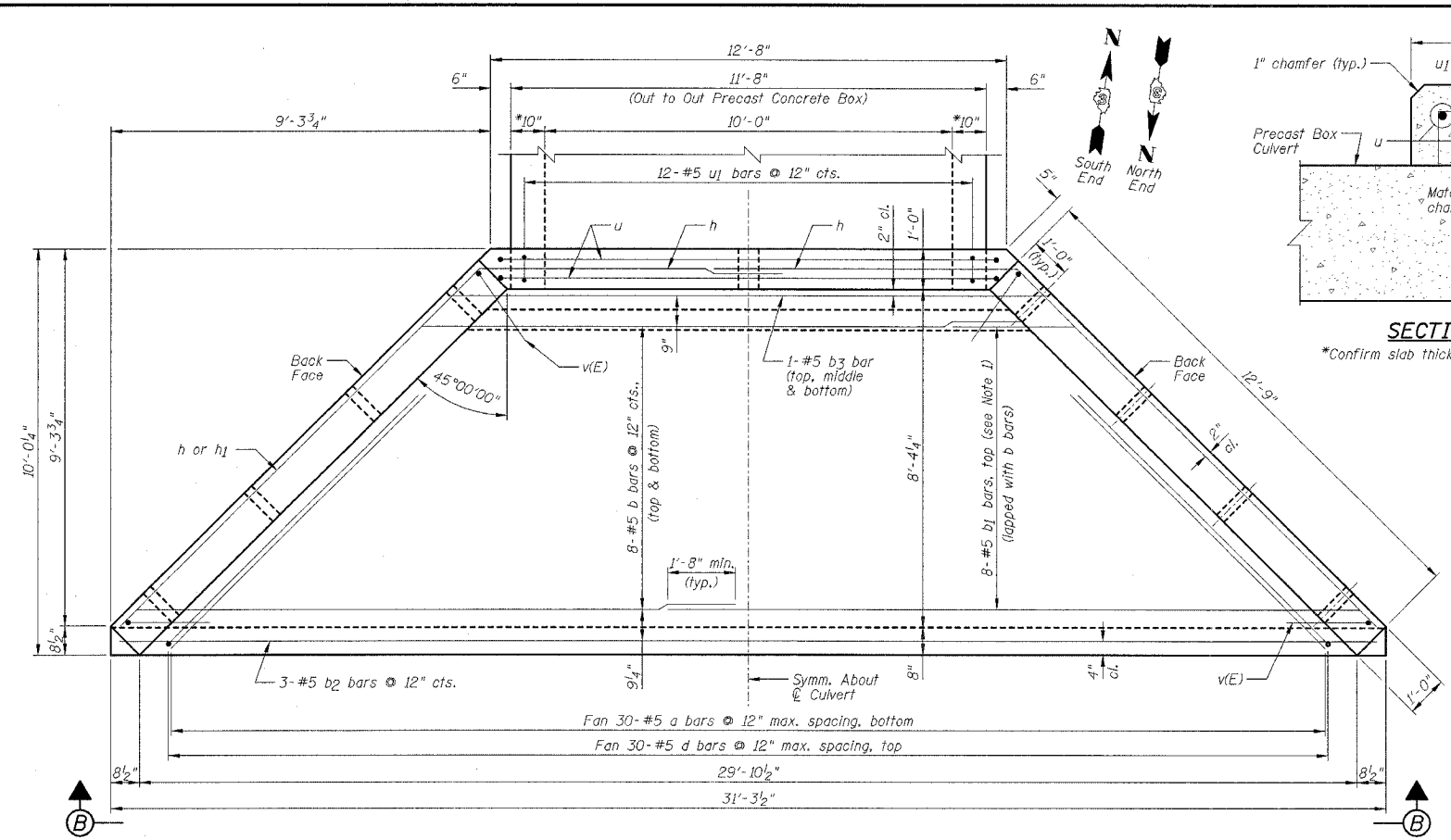
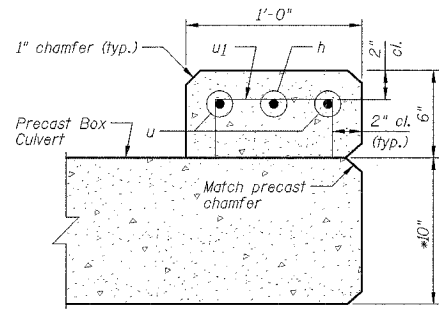


F.A.P. RTE.	SECTION	COUNTY	TOTAL SHEETS	SHEET NO.
627	(I-1) BR & I	LA SALLE	106	31
STA.		TO STA.		
FED. ROAD DIST. NO.		ILLINOIS FED. AID PROJECT		

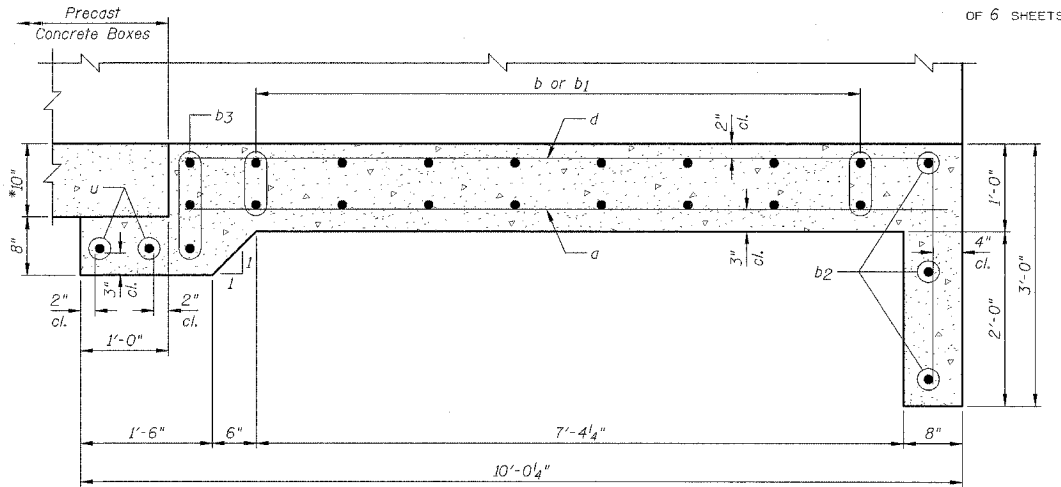
SHEET NO. A3
OF 6 SHEETS



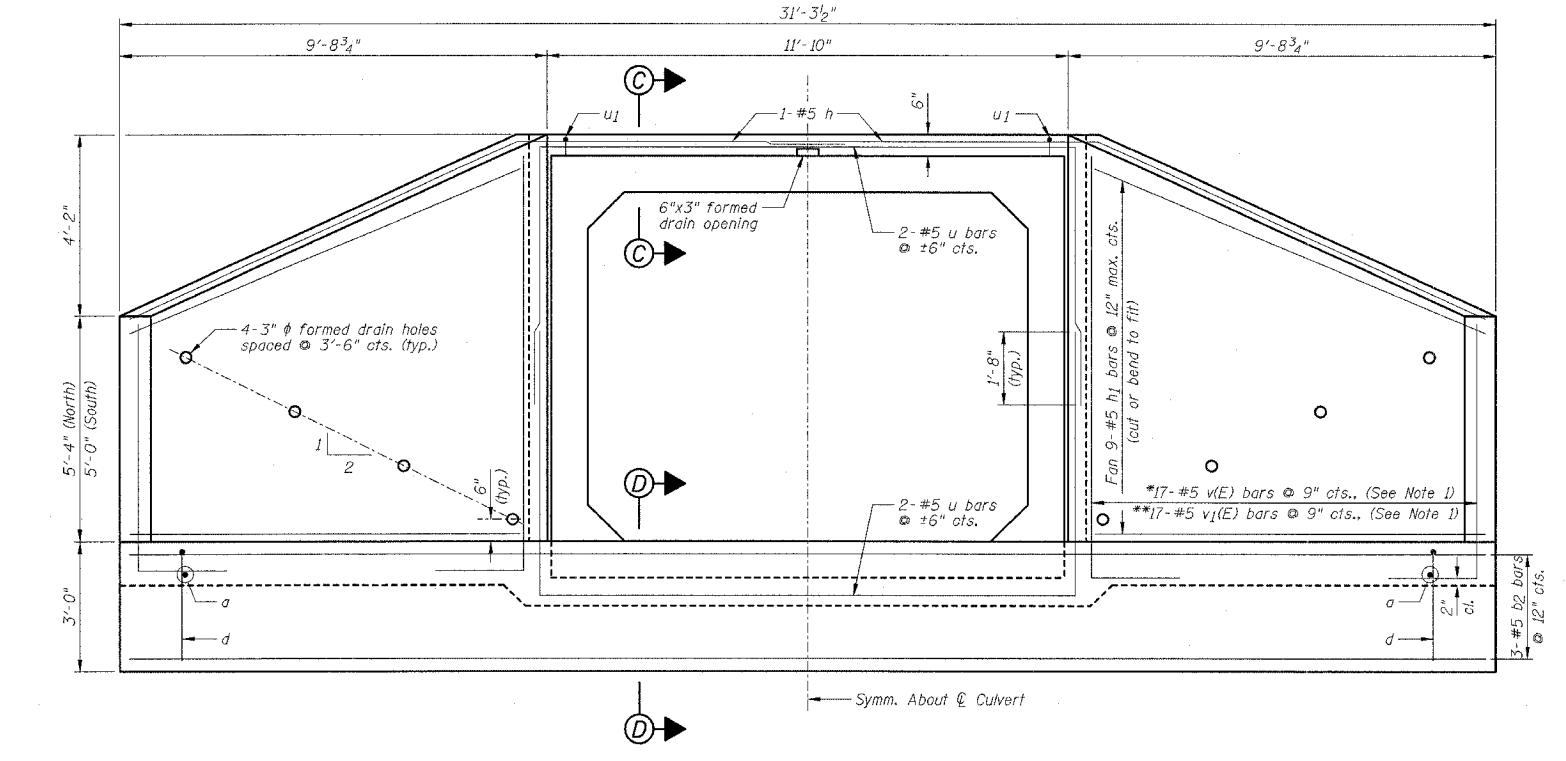
VIEW A-A
*Confirm wall thickness with precaster



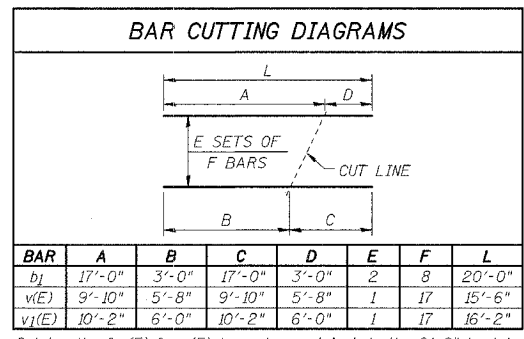
SECTION C-C
*Confirm slab thickness with precaster



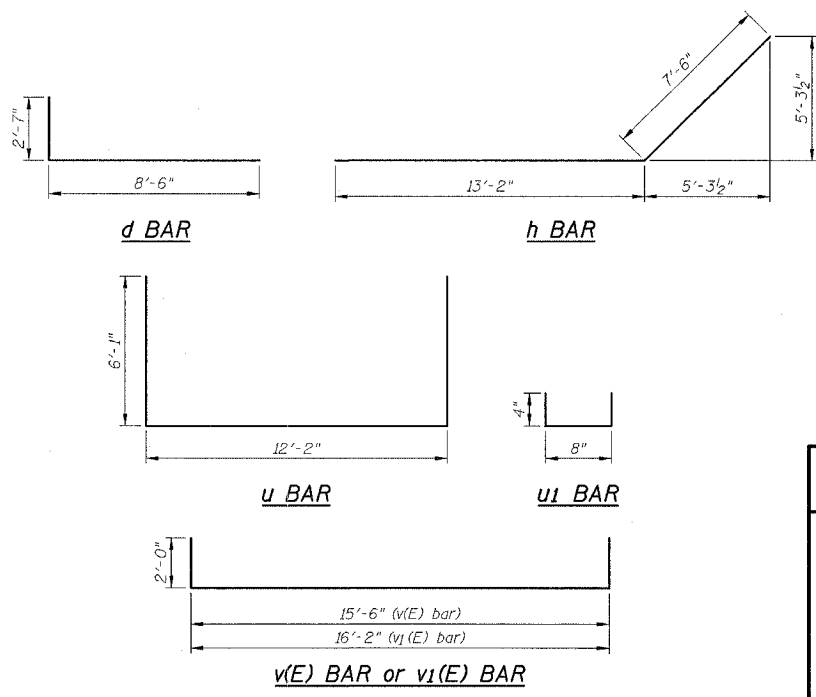
SECTION D-D
*Confirm slab thickness with precaster



END ELEVATION (VIEW B-B)
*South wingwall vertical bars (v(E) bars)
**North wingwall vertical bars (v1(E) bars)



Cut length of v(E) & v1(E) bars does not include the 2'-0" bent legs.



BILL OF MATERIALS

Bar	No.	Size	Length	Shape
a	60	#5	8'-7"	—
b	32	#5	14'-8"	—
b1	16	#5	20'-0"	—
b2	6	#5	30'-9"	—
b3	6	#5	14'-6"	—
d	60	#5	11'-1"	┌
h	4	#5	20'-8"	┌
h1	36	#5	12'-6"	—
u	8	#5	24'-4"	┌
u1	24	#5	1'-4"	┌
v(E)	17	#5	19'-6"	┌┘
v1(E)	17	#5	20'-2"	┌┘
Item	Unit	Quantity		
Reinforcement Bars	Pound	3130		
Reinforcement Bars	Pound	700		
Epoxy Coated	Pound	700		
Concrete Structures	Cu Yd	35.0		

NOTES:

- Order b1, v(E) & v1(E) bars full length. Cut according to Bar Cutting Diagram. Use remainder of b1 bars in bottom of slab & remainder of v(E) or v1(E) in opposite wingwall (see View B-B for v(E) or v1(E) bar locations).
- Work this sheet with Sheets A1 & A2.
- For location of View A-A see Sheet A1.
- Minimum bar lap: #5 = 1'-8"

CAST-IN-PLACE APRON VIEW, ELEVATION, SECTIONS AND DETAILS

IL ROUTE 71
OVER TRIBUTARY TO ILLINOIS RIVER
F.A.P. ROUTE 627 - SEC. (I-1) BR & I
LA SALLE COUNTY
STATION 393+00.00

DESIGNED BY: J.M.L.
DRAWN BY: D.J.M.
CHECKED BY: M.S.W.

Farnsworth GROUP
2706 McGraw Drive
Moline, Illinois 61704
302/853-2425, 302/853-1571 fax

FILE NO.: 24-6772
DATE: 05-12-06
SHEET NO.: 31 OF 106