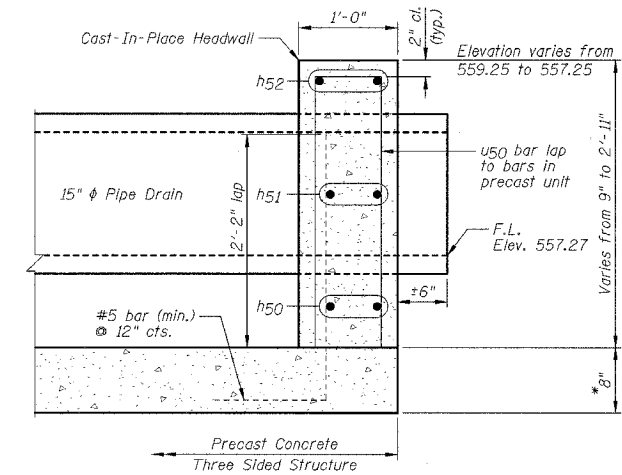
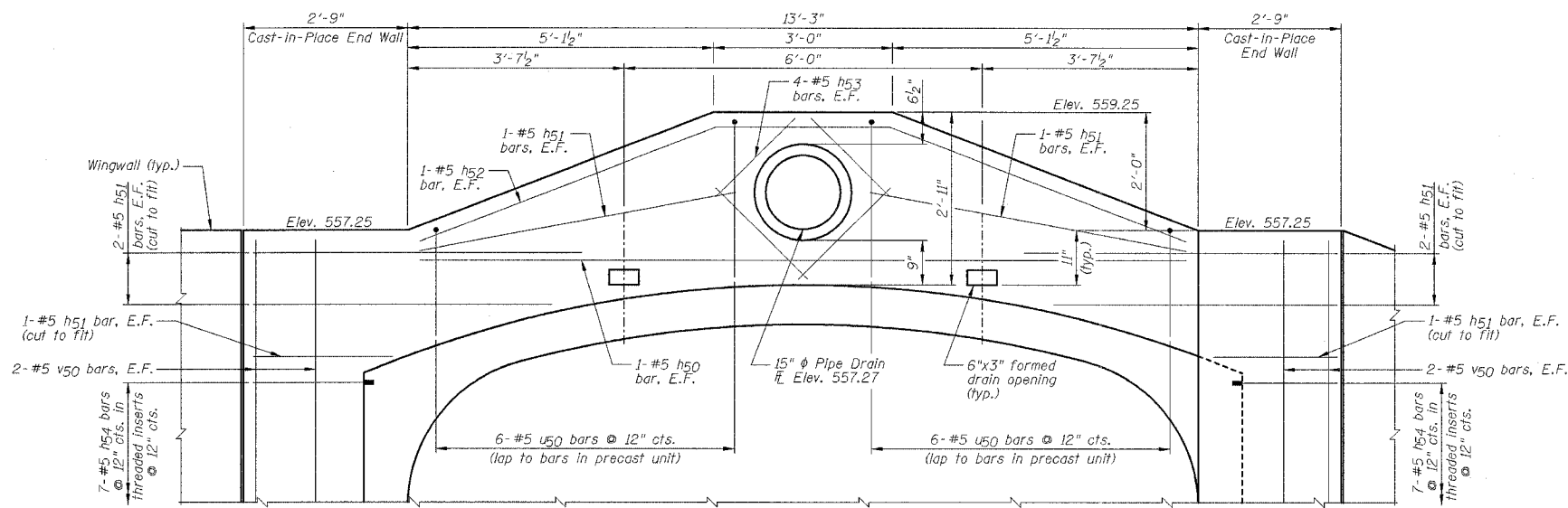
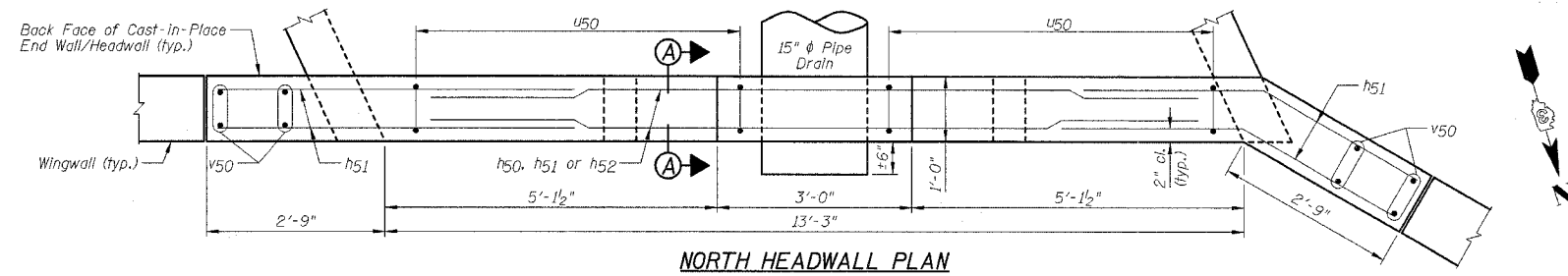


F.A.P. RTE.	SECTION	COUNTY	TOTAL SHEETS	SHEET NO.
627	(I-1) BR & I	LA SALLE	106	42
STA.	TO STA.			
FED. ROAD DIST. NO.	ILLINOIS	FED. AID PROJECT		

SHEET NO. F8
OF 14 SHEETS

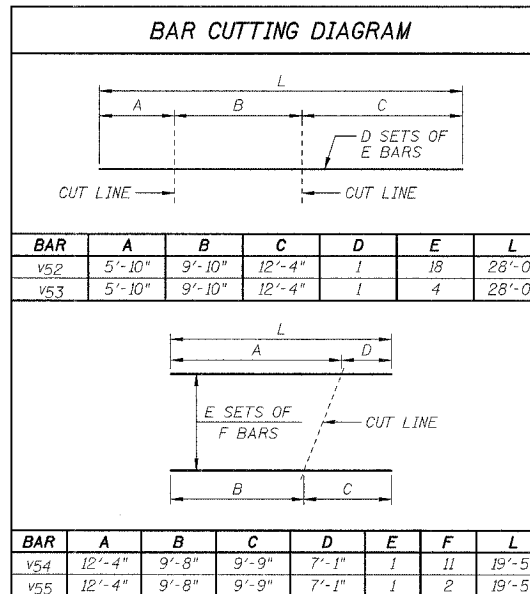
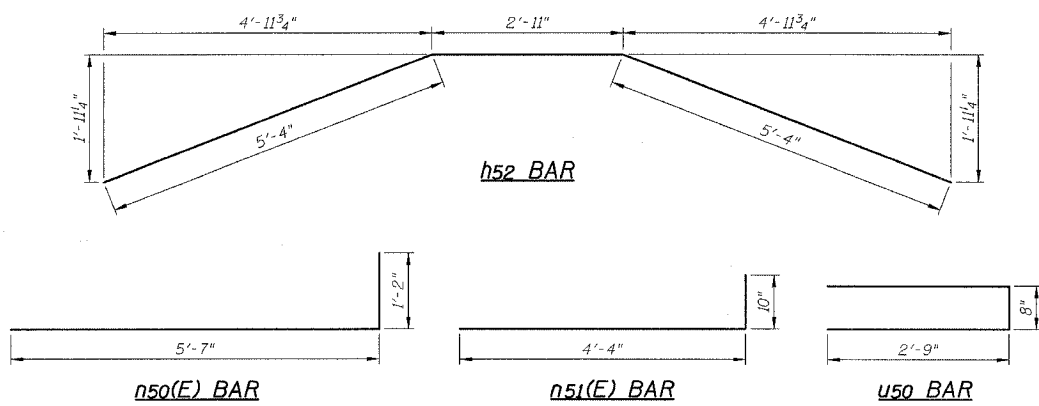


**NORTH HEADWALL & WINGWALLS
BILL OF MATERIALS**

Bar	No.	Size	Length	Shape
h50	2	#5	12'-11"	—
h51	16	#5	5'-6"	—
h52	2	#5	13'-7"	—
h53	8	#5	2'-4"	—
h54	14	#5	3'-0"	—
h55	23	#4	11'-6"	—
h56	29	#4	14'-0"	—
h57	21	#4	13'-8"	—
v50(E)	40	#7	6'-9"	—
v51(E)	36	#5	5'-2"	—
v50	64	#5	8'-5"	—
v51	30	#5	6'-5"	—
v52	30	#5	4'-2"	—
u50	12	#5	6'-2"	—
v50	8	#5	8'-10"	—
v52	18	#5	28'-0"	—
v53	4	#4	28'-0"	—
v54	11	#5	19'-5"	—
v55	2	#4	19'-5"	—
w50	52	#5	11'-4"	—
w51	22	#5	13'-8"	—
Item	Unit	Quantity		
Structure Excavation	Cu. Yd.	130		
Rock Excavation for Structures	Cu. Yd.	31		
Concrete Structures	Cu. Yd.	53.7		
Reinforcement Bars	Pound	3670		
Reinforcement Bars, Epoxy Coated	Pound	750		

NOTES:

- 1.) Work this sheet with Sheets F1 thru F7 and F11.
- 2.) B.F. denotes Back Face, F.F. denotes Front Face & E.F. denotes Each Face.
- 3.) Reinforcement bars designated (E) shall be epoxy coated.
- 4.) Order v52, v53, v54 & v55 bars full length. Cut according to Bar Cutting Diagram. Use remainder of v52, v53, v54 & v55 bars in same face of wingwall.
- 5.) h51, h54 and u50 bars shall be field cut and bent as required.
- 6.) The threaded inserts for the h54 bars shall be cast into the precast unit.
- 7.) The cost of threaded inserts shall be included in the cost of "Three Sided Precast Concrete Structures, 12'x7'".



DESIGNED BY
J.M.L.

DRAWN BY
D.J.M.

CHECKED BY
M.S.W.

Farnsworth GROUP
2700 Midtown Drive
Bloomington, Illinois 61704
302/653-3635, 302/653-1571 fax

FILE NO.
24-6772

DATE
05-12-06

SHEET NO.
42 of 106

NORTH HEADWALL
IL ROUTE 71
OVER TRIBUTARY TO ILLINOIS RIVER
F.A.P. ROUTE 627 - SEC. (I-1) BR & I
LA SALLE COUNTY
STATION 416+44.62
STRUCTURE NO. 050-C804