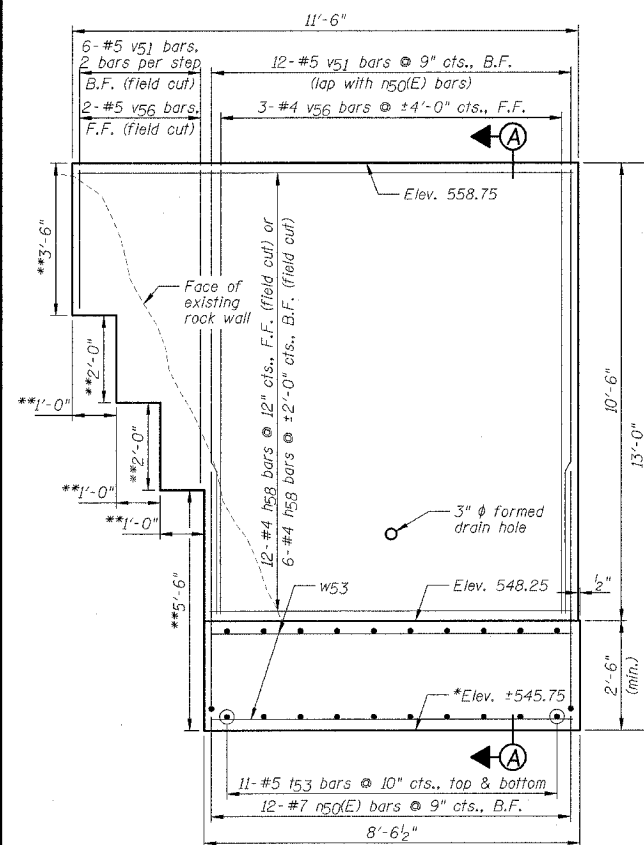


F.A.P. RTE.	SECTION	COUNTY	TOTAL SHEETS	SHEET NO.
627	(I-1) BR & I	LA SALLE	106	43
STA.		TO STA.		
FED. ROAD DIST. NO.		ILLINOIS FED. AID PROJECT		

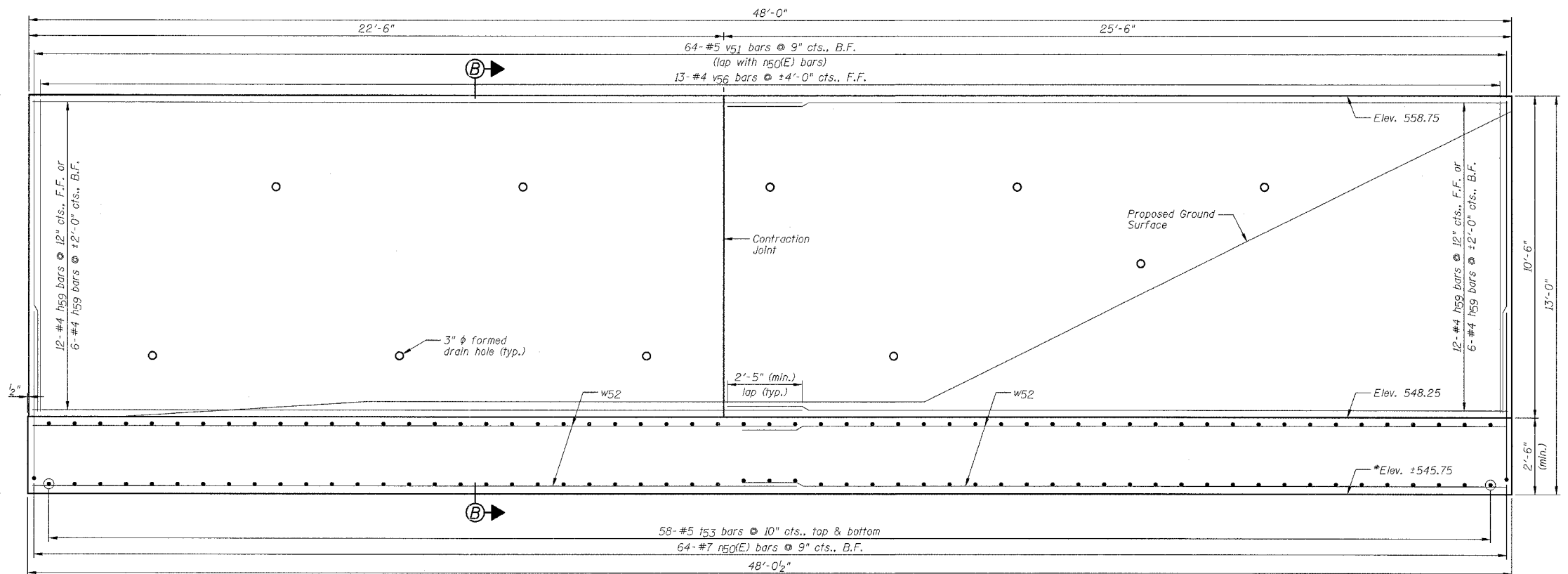
SHEET NO. F9

OF 14 SHEETS

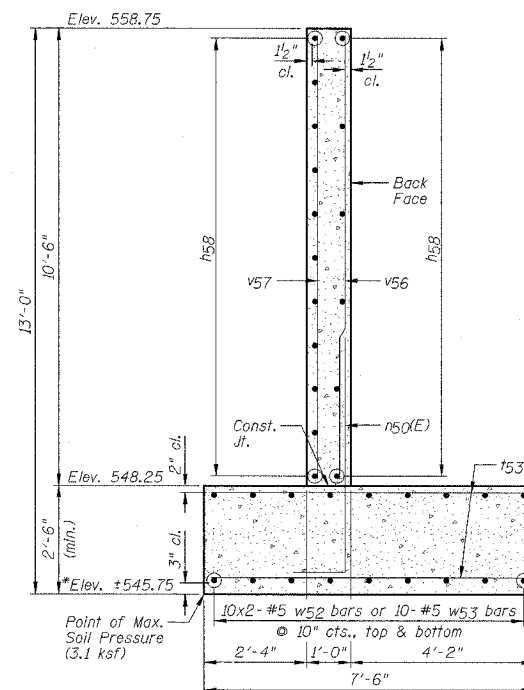


**SOUTHWEST WINGWALL ELEVATION**

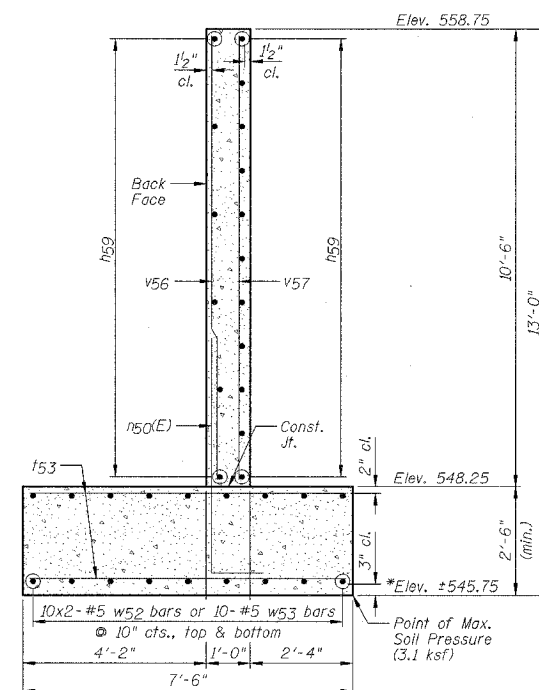
Note: \*\*Dimensions may vary depending on rock formation. Verify dimensions in field.



**SOUTHEAST WINGWALL ELEVATION**



**SECTION A-A**



**SECTION B-B**

**NOTES:**

- 1.) Work this sheet with Sheets F1 thru F6, F10 and F11.
- 2.) See Sheet F10 for Bill of Materials.
- 3.) B.F. denotes Back Face, F.F. denotes Front Face.
- 4.) \*The Footings shall be set 2'-0" minimum into sound rock. The thickness of the footings shall be increased if required to maintain this embedment.
- 5.) Reinforcement bars designated (E) shall be epoxy coated.
- 6.) Calculated Maximum Bearing Pressure = 3.1 ksf.

**SOUTH WINGWALLS**  
**IL ROUTE 71**  
**OVER TRIBUTARY TO ILLINOIS RIVER**  
**F.A.P. ROUTE 627 - SEC. (I-1) BR & I**  
**LA SALLE COUNTY**  
**STATION 416+44.62**  
**STRUCTURE NO. 050-C804**

DESIGNED BY J.M.L.	<p>2700 Midway Drive Bloomington, Illinois 61704 309/888-6438, 309/888-8791 fax</p>	FILE NO. 24-6772
DRAWN BY D.J.M.		DATE 05-12-06
CHECKED BY M.S.W.		SHEET NO. 43 OF 106