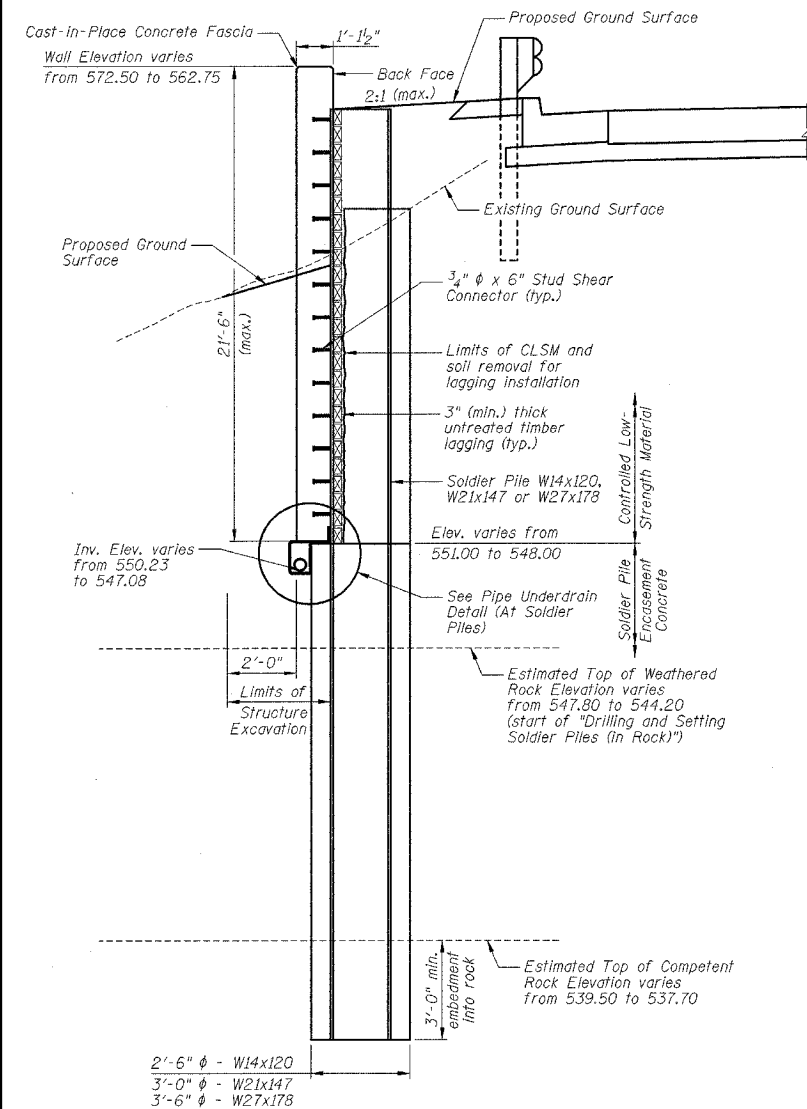


F.A.P. RTE.	SECTION	COUNTY	TOTAL SHEETS	SHEET NO.
627	(I-1) BR & I	LA SALLE	106	50
STA.	TO STA.			
FED. ROAD DIST. NO.	ILLINOIS		FED. AID PROJECT	

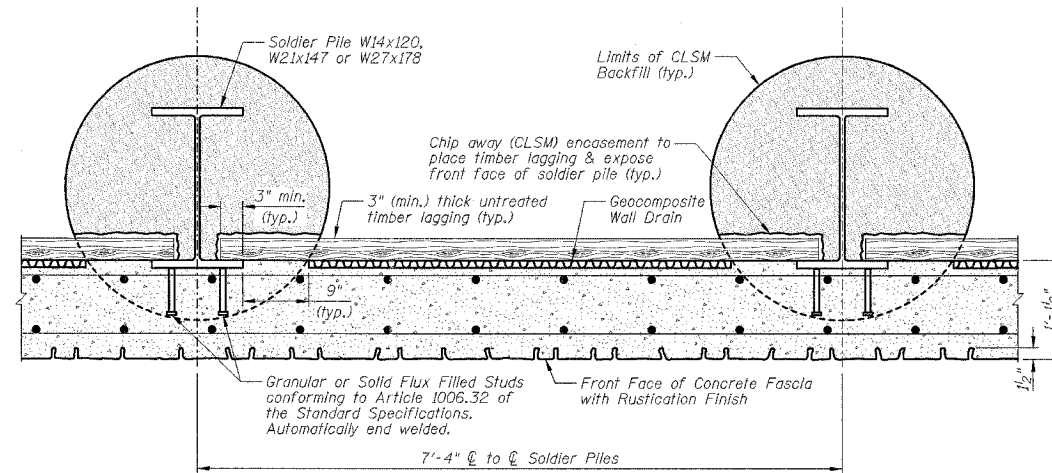
SHEET NO. 62
OF 12 SHEETS

STATION 462+24.35 TO STATION 464+94.66
BUILT 200_ BY
STATE OF ILLINOIS
F.A.P. RTE. 627 SECTION (I-1) BR & I
STR. NO. 050-W004

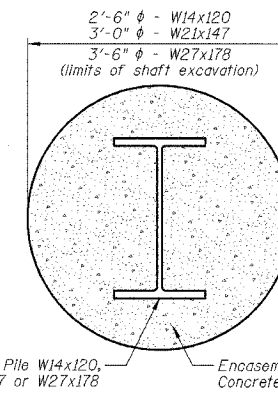
NAME PLATE DETAIL
See Standard 515001



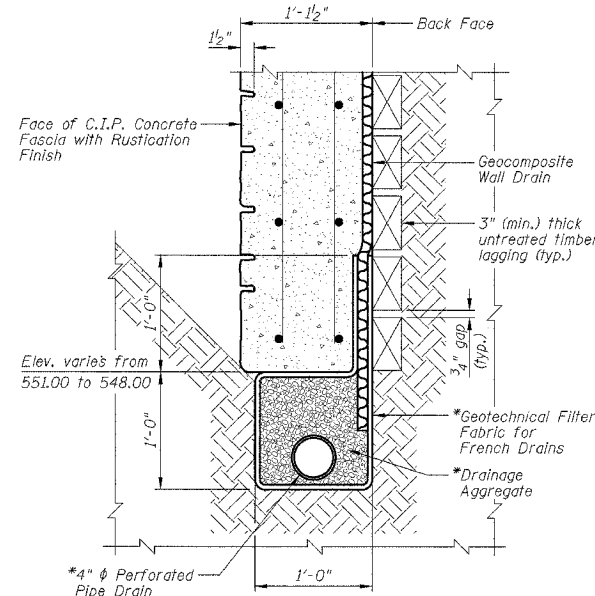
TYPICAL SECTION



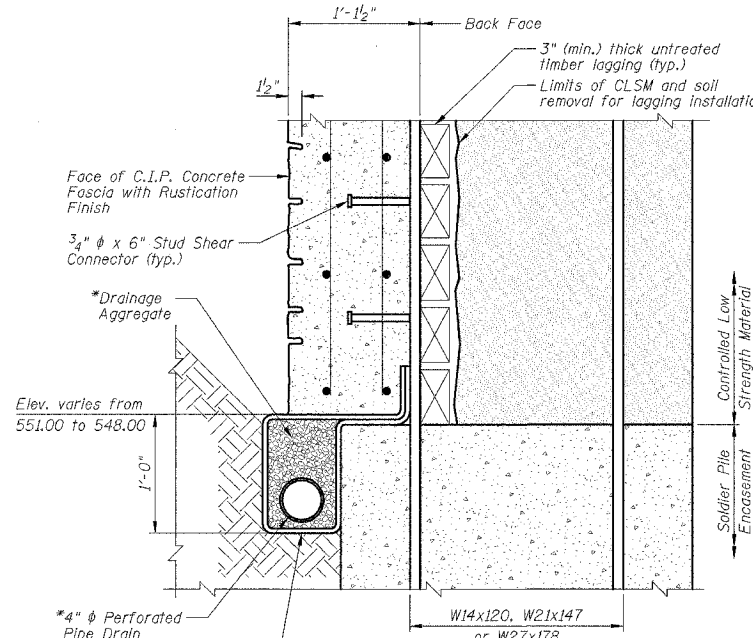
TYPICAL PLAN



TYPICAL PILE SECTION



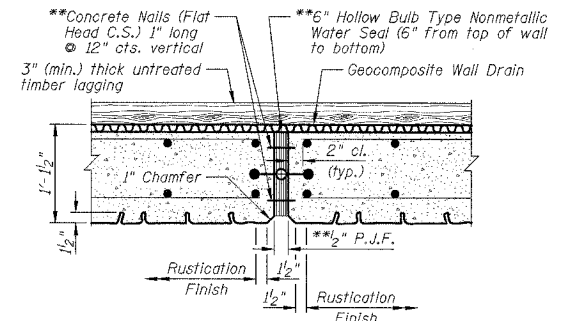
BETWEEN SOLDIER PILES



AT SOLDIER PILES

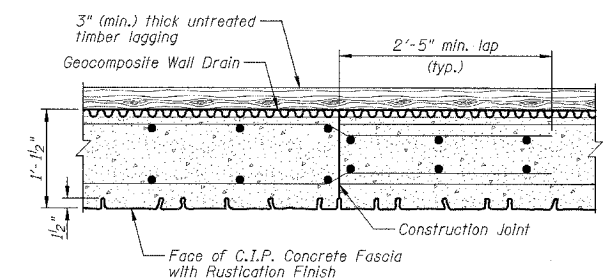
PIPE UNDERDRAIN DETAILS

*Included in the cost of "Pipe Underdrains for Structures".



EXPANSION JOINT DETAIL

Notes: 1.) **Cost included with "Concrete Structures".
2.) P.J.F. exaggerated for clarity.



CONSTRUCTION JOINT DETAIL

SUGGESTED CONSTRUCTION SEQUENCE:

- 1.) Excavate working platform and drill shaft excavation for soldier pile. Embedment into rock shall be as shown on the plans.
- 2.) Set soldier pile in the shaft excavation and brace to maintain proper pile position.
- 3.) Place encasement concrete around soldier pile to the bottom of the C.I.P. concrete fascia, and Controlled Low Strength Material (CLSM) to the excavated ground surface.
- 4.) Excavate in front of wall in stages removing only the soil necessary to place each timber lagging snug against excavated surface.
- 5.) After the lagging has been placed to the depths shown in the plans, the Geocomposite Wall Drain shall be attached to and cover the untreated timber lagging.
- 6.) The French Drain shall be excavated, lined with fabric, pipe and aggregate placed and connected to the Geocomposite Wall Drain as shown on the plans.
- 7.) Attach stud shear connectors, set reinforcement, form and pour C.I.P. concrete fascia.
- 8.) Cut off any additional piling extending above the top of pile elevation as noted on Sheets G4 and G5.
- 9.) Backfilling of the wall can commence after the concrete fascia has met the minimum compressive strength f'c of the concrete as noted on the plans.

GENERAL NOTES:

- 1.) Reinforcement bars shall conform to the requirements of AASHTO M31 or M322 Grade 60.
- 2.) See Sheets G7 thru G9 for soil boring data.
- 3.) All exposed edges shall be chamfered 3/4" except as noted.
- 4.) The Contractor is responsible for the design and performance of the Untreated Timber Lagging using no less than a 3" nominal rough-sawn thickness and timber with a minimum fb of 1000 psi. The design shall be approved by the Engineer.
- 5.) Stud Shear Connectors shall be 3/4" x 6" granular or solid flux filled headed studs automatically end welded to the front flange in field.
- 6.) For information on the Drilled Soldier Pile Retaining Wall, see Special Provision "Drilled Soldier Pile Retaining Wall".
- 7.) All construction joints shall be banded.
- 8.) See Sheet G6 for the limits of "Rustication Finish". See Special Provision "Rustication Finish" for additional information.
- 9.) All Cast-in-Place concrete shall be integrally colored. See the Special Provision "Colored Concrete - Cast-in-Place" for additional information.
- 10.) For backfilling of the retaining wall, see the Standard Specifications.
- 11.) C.I.P. denotes Cast-in-Place.
- 12.) Protective Coat shall be applied to all exposed surfaces of the wall (extend a minimum of 1'-0" below finished grade).
- 13.) The cost for drilling through the existing gravity wall for the 4" x 6" Pipe Drain shall be included in the cost of "Pipe Underdrains for Structures".
- 14.) The cost of cutting off any additional piling shall be included in the cost of "Furnishing Soldier Piles".
- 15.) The cost of wall end supports shall be included in the cost of "Furnishing Soldier Piles" (see Sheet G3 for Wall End Support for Timber Lagging Detail).
- 16.) The existing plans are provided for Informational use only.

TOTAL WALL BILL OF MATERIALS

ITEMS	UNITS	TOTAL
Structure Excavation	Cu Yd	494
Concrete Structures	Cu Yd	194.3
Protective Coat	Sq Yd	270
Rustication Finish	Sq Ft	4587
Stud Shear Connectors	Each	908
Untreated Timber Lagging	Sq Ft	3971
Furnishing Soldier Piles (W Section)	Foot	1168
Reinforcement Bars, Epoxy Coated	Pound	21220
Name Plates	Each	1
Geocomposite Wall Drain	Sq Yd	259
Pipe Underdrains for Structures 4"	Foot	265
Drilling and Setting Soldier Piles (In Soil)	Cu Ft	4367
Drilling and Setting Soldier Piles (In Rock)	Cu Ft	2995
Temporary Soil Retention System	Sq Ft	220

NOTE:

Work this sheet with Sheets G1 and G3 thru G10.

GENERAL NOTES, BILL OF MATERIALS, SECTIONS AND DETAILS

IL ROUTE 71
SOLDIER PILE RETAINING WALL
F.A.P. ROUTE 627 - SEC. (I-1) BR & I
LA SALLE COUNTY
STATION 462+24.35 TO STATION 464+94.66
PROPOSED STRUCTURE NO. 050-W004

DESIGNED BY J.M.L.	<p>2700 McGraw Drive Bloomington, Illinois 61704 309/933-6636, 309/933-1671 fax</p>	FILE NO. 24-6772
DRAWN BY D.J.M.		DATE 05-12-06
CHECKED BY M.S.W.		SHEET NO. 50 OF 106