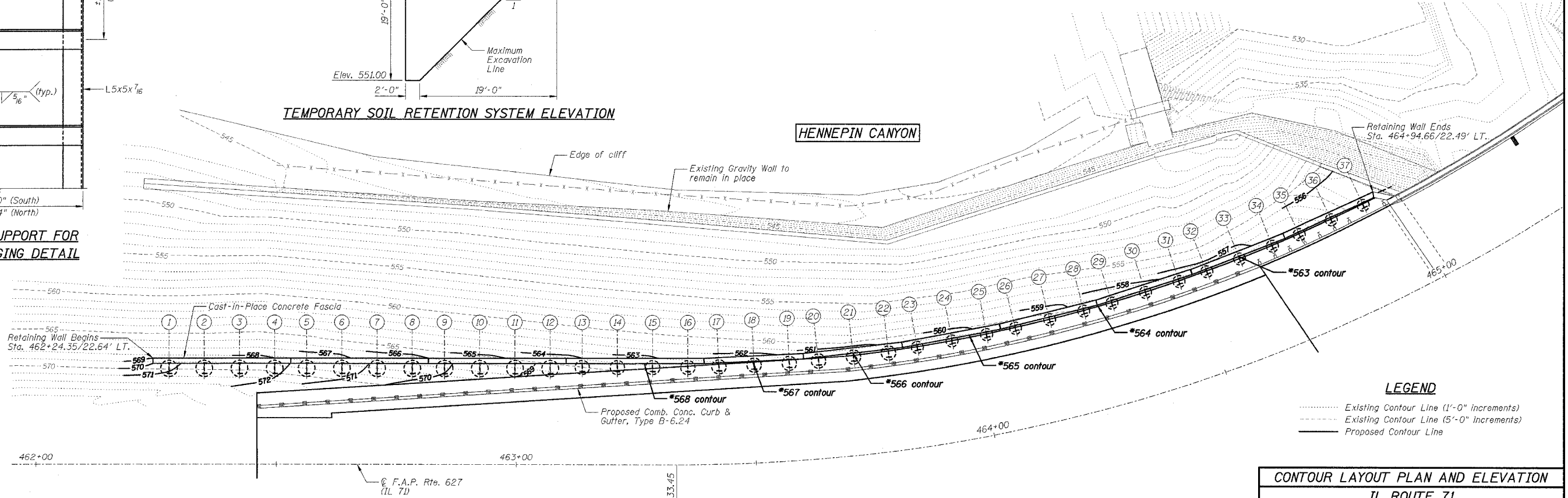
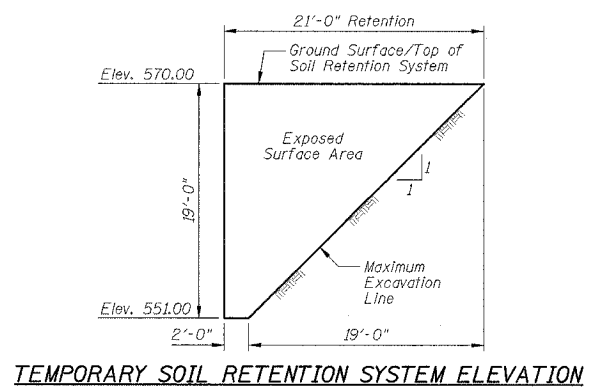
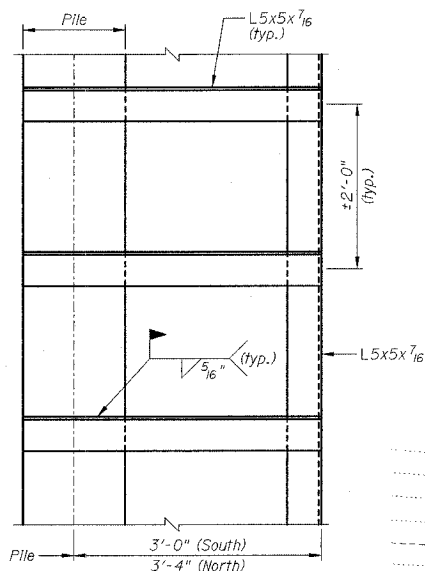
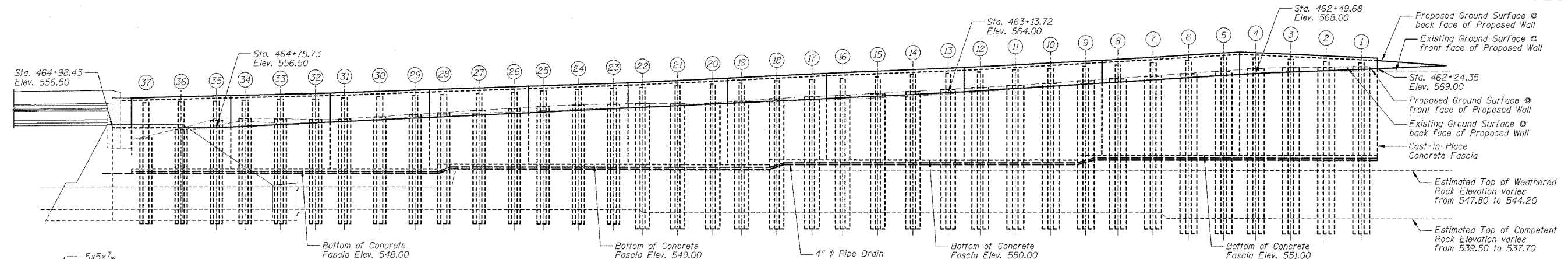


F.A.P. RTE.	SECTION	COUNTY	TOTAL SHEETS	SHEET NO.
627	(I-1) BR & I	LA SALLE	106	51
STA.		TO STA.		
FED. ROAD DIST. NO.		ILLINOIS FED. AID PROJECT		

SHEET NO. 63
OF 12 SHEETS



LEGEND

- Existing Contour Line (1'-0" increments)
- Existing Contour Line (5'-0" increments)
- Proposed Contour Line

BILL OF MATERIALS

Item	Unit	Total
Temporary Soil Retention System	Sa. Ft.	220

- NOTES:**
- 1.) Work this sheet with Sheets G1, G2, G4 & G5.
 - 2.) *Denotes contour start location.
 - 3.) See Sheet G1 for location of Temporary Soil Retention System.

CONTOUR LAYOUT PLAN AND ELEVATION
IL ROUTE 71
SOLDIER PILE RETAINING WALL
F.A.P. ROUTE 627 - SEC. (I-1) BR & I
LA SALLE COUNTY
STATION 462+24.35 TO STATION 464+94.66
PROPOSED STRUCTURE NO. 050-W004

DESIGNED BY: J.M.L.
DRAWN BY: D.J.M.
CHECKED BY: M.S.W.

Farnsworth GROUP
2700 McGraw Drive
Bloomington, Illinois 61704
302/952-6435, 302/952-1971 fax

FILE NO.: 24-6772
DATE: 05-12-06
SHEET NO.: 51 of 106

