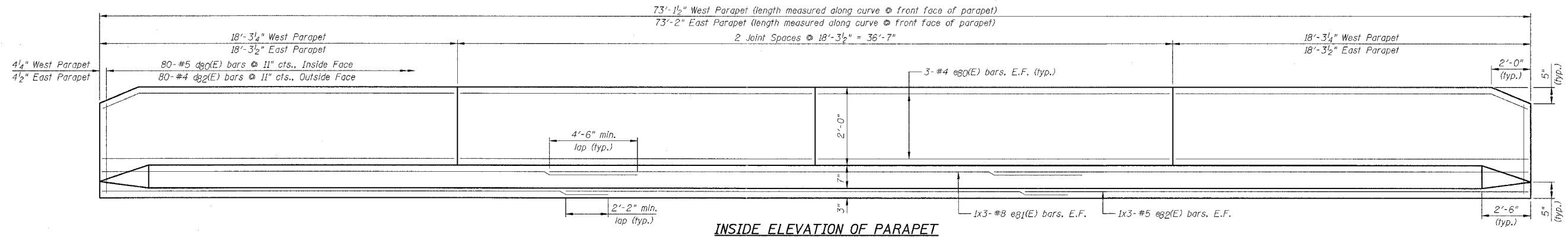
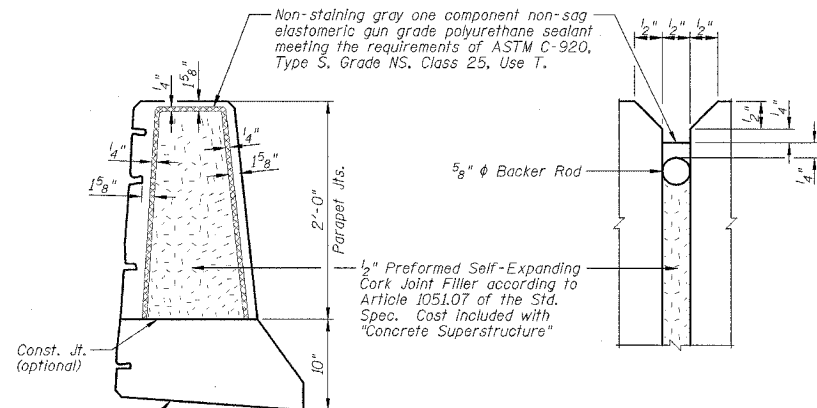


F.A.P. RTE.	SECTION	COUNTY	TOTAL SHEETS	SHEET NO.
627	(I-1) BR & I	LA SALLE	106	70
STA.	TO STA.			
FED. ROAD DIST. NO.	ILLINOIS	FED. AID PROJECT		

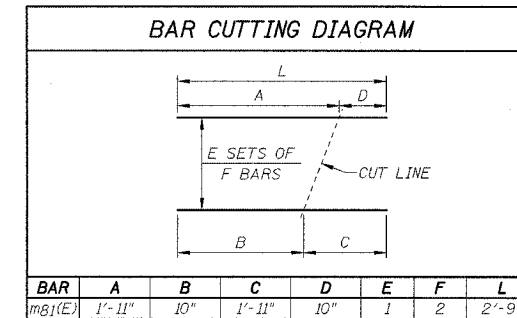
SHEET NO. H10  
OF 26 SHEETS



INSIDE ELEVATION OF PARAPET

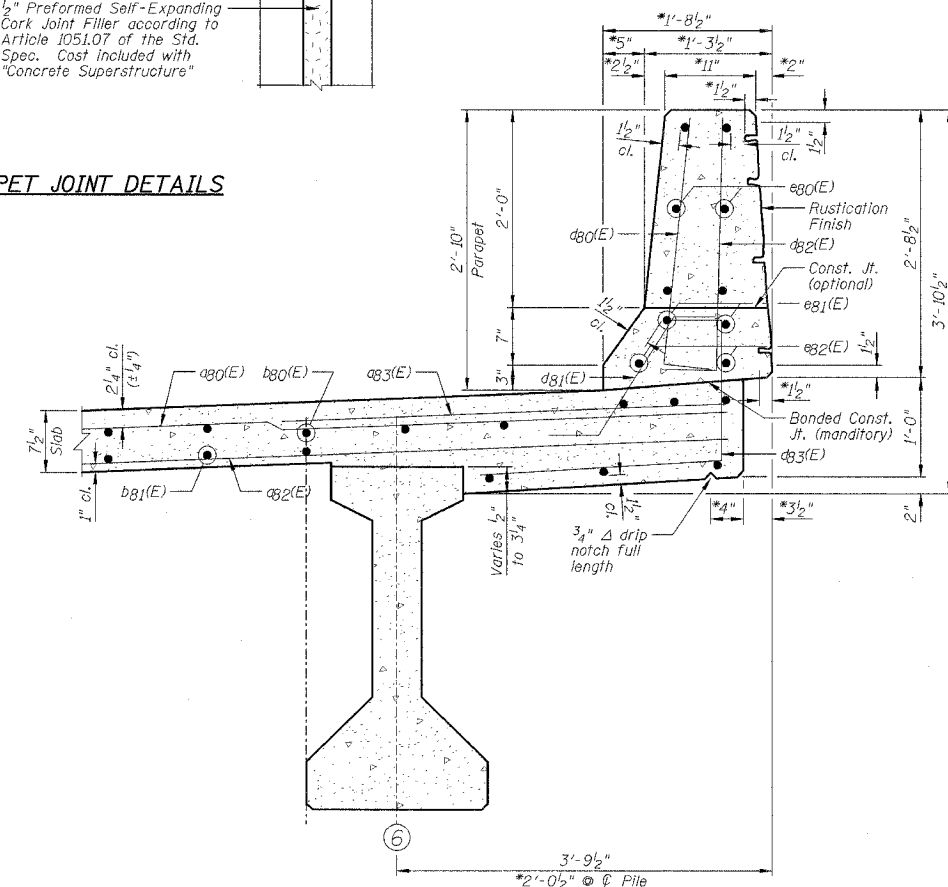
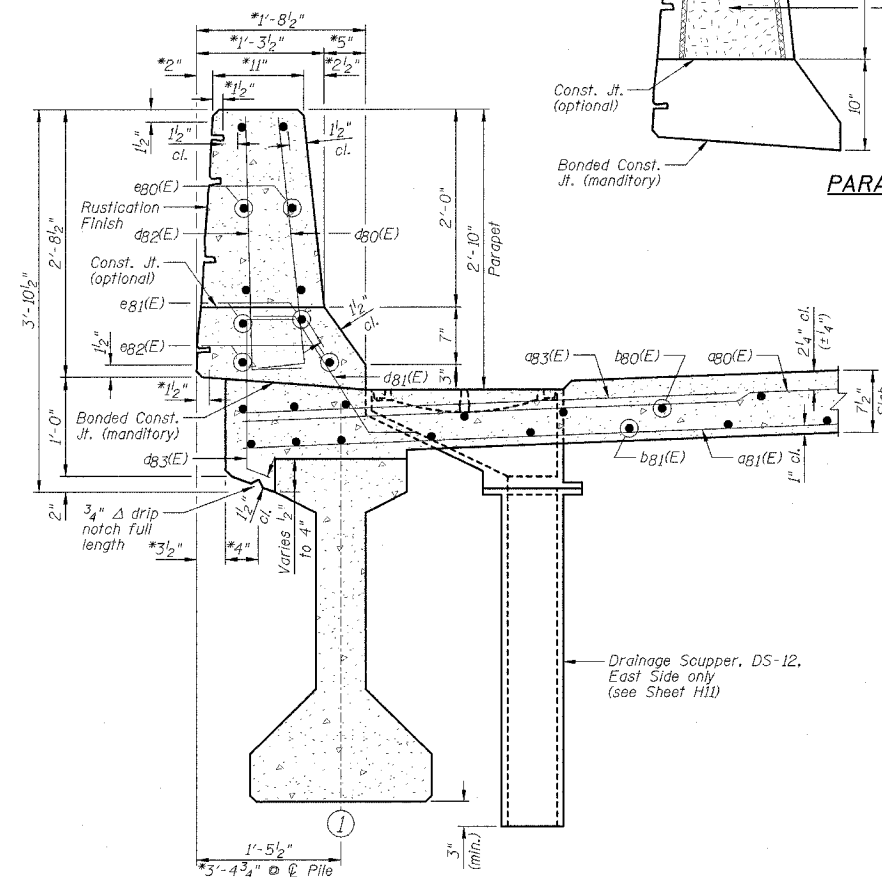


PARAPET JOINT DETAILS

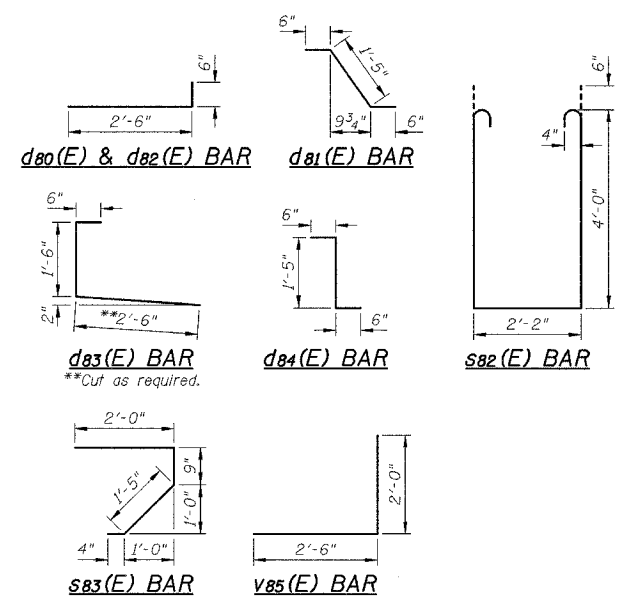


SUPERSTRUCTURE BILL OF MATERIALS

Bar	No.	Size	Length	Shape
d80(E)	234	#5	20'-1"	
d81(E)	88	#5	15'-6"	
d82(E)	88	#5	24'-8"	
d83(E)	118	#6	4'-6"	
d84(E)	16	#5	2'-0"	
b80(E)	128	#5	25'-4"	
b81(E)	144	#5	19'-5"	
d80(E)	160	#5	3'-0"	
d81(E)	148	#5	2'-5"	
d82(E)	160	#4	3'-0"	
d83(E)	160	#4	4'-6"	
d84(E)	12	#5	2'-5"	
e80(E)	48	#4	17'-11"	
e81(E)	12	#8	27'-3"	
e82(E)	12	#5	25'-9"	
m80(E)	24	#6	8'-10"	
m81(E)	2	#6	2'-9"	
m82(E)	10	#6	4'-9"	
m83(E)	20	#6	21'-0"	
s82(E)	68	#4	11'-2"	
s83(E)	78	#5	4'-6"	
v85(E)	76	#5	4'-6"	
Item	Unit	Quantity		
Protective Coat	Sq. Yd.	356		
Concrete	Cu. Yd.	122.9		
Superstructures				
Bridge Deck Grooving	Sq. Yd.	277		
Reinforcement Bars, Epoxy Coated	Pound	21450		
Bar Splicers (E)	Each	72		



SECTIONS THRU PARAPET  
(@ Looking South)



NOTES:

- 1.) Work this sheet with Sheets H7 thru H9 & H11.
- 2.) Reinforcement bars designated (E) shall be epoxy coated.
- 3.) E.F. denotes Each Face.
- 4.) Space drainage scuppers to miss reinforcement.
- 5.) Bars indicated thus 1x3-#5 etc. indicates 1 line of bars with 3 lengths per line.
- 6.) Inside Elevation Of Parapet view is exaggerated vertically to show reinforcement.
- 7.) Minimum lap length: #5 bar = 2'-2"; #8 bar = 4'-6"
- 8.) \*Dimensions measured radially.
- 9.) See Sheet H18 For "Rustication Finish" locations.

SUPERSTRUCTURE DETAILS, PARAPET  
DETAILS AND BILL OF MATERIALS

IL ROUTE 71  
OVER TRIBUTARY TO ILLINOIS RIVER  
F.A.P. ROUTE 627 - SEC. (I-1) BR & I  
LA SALLE COUNTY  
STATION 465+35.39  
STRUCTURE NO. 050-0239

DESIGNED BY: J.M.L.  
DRAWN BY: D.J.M.  
CHECKED BY: M.S.W.

**Farnsworth GROUP**  
2706 Midway Drive  
Washington, Illinois 61704  
302/692-8635, 302/692-8711 fax

FILE NO.: 24-6772  
DATE: 05-12-06  
SHEET NO.: 70 of 106