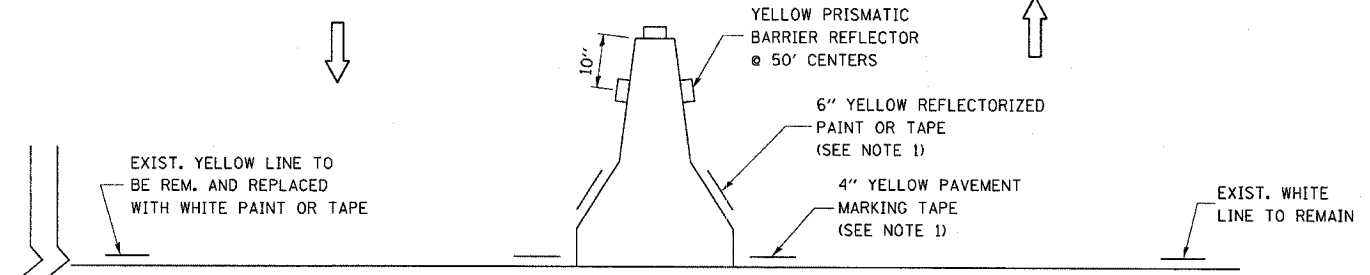


F.A.I. RTE.	SECTION	COUNTY	TOTAL SHEETS	SHEET NO.
39	(50-4B)BR	LASALLE	365	17
STA.		TO STA.		
FED. ROAD DIST. NO.	ILLINOIS	FED. AID PROJECT		

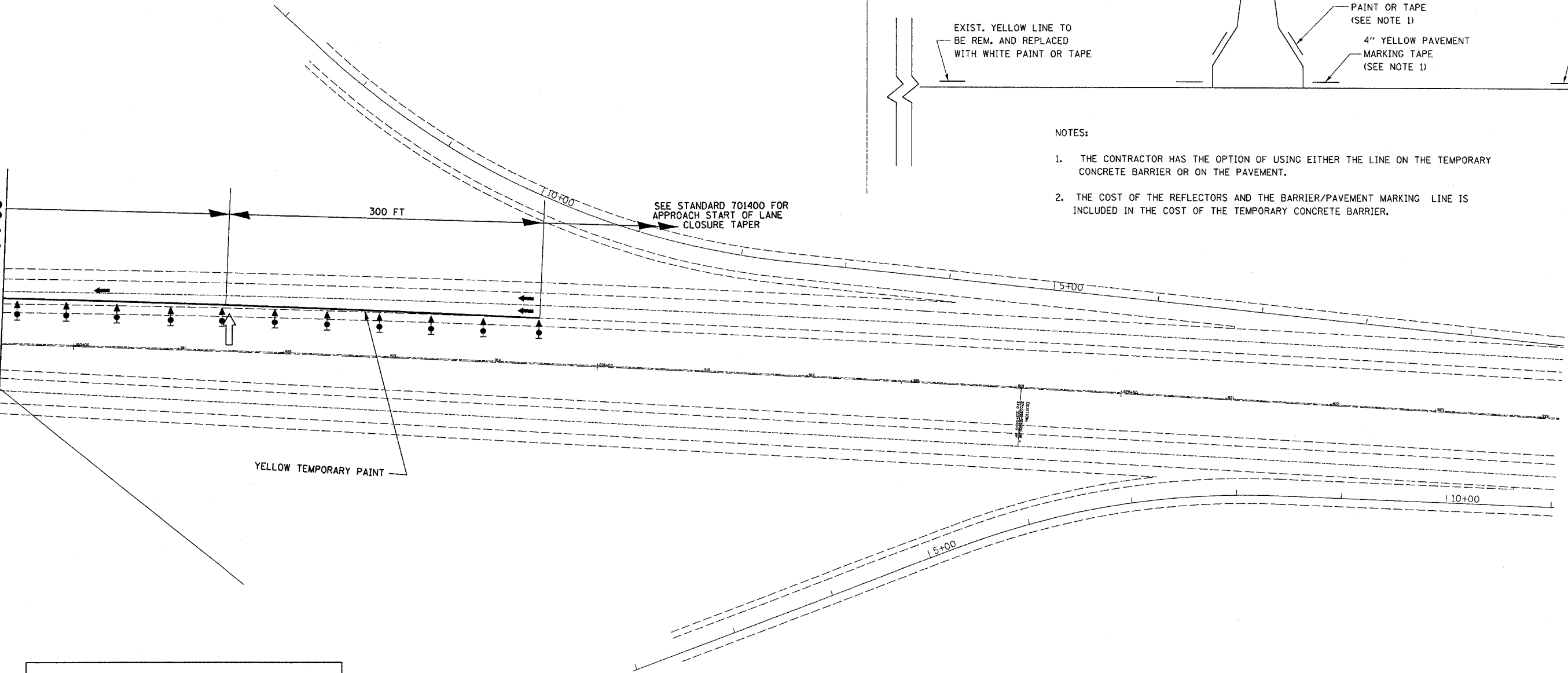
☉ RDWY.



NOTES:

1. THE CONTRACTOR HAS THE OPTION OF USING EITHER THE LINE ON THE TEMPORARY CONCRETE BARRIER OR ON THE PAVEMENT.
2. THE COST OF THE REFLECTORS AND THE BARRIER/PAVEMENT MARKING LINE IS INCLUDED IN THE COST OF THE TEMPORARY CONCRETE BARRIER.

MATCH LINE STA 910+00



	VERTICAL PANEL (BACK TO BACK)
	DIRECTION INDICATOR BARRICADE WITH STEADY BURN MONODIRECTIONAL LIGHT
	DRUM WITH STEADY BURN MONODIRECTIONAL LIGHT
	BARRICADE OR DRUM WITH STEADY BURNING MONODIRECTIONAL LIGHT
	SIGN
	TYPE III BARRICADE WITH FLASHING LIGHTS
	FLOW OF TRAFFIC ARROW
	ARROW BOARD
	TEMPORARY CONCRETE BARRIER

REVISIONS	
NAME	DATE

ILLINOIS DEPARTMENT OF TRANSPORTATION
**CROSSOVER PLAN NORTH
 STAGE II**
 SCALE: VERT. _____
 DATE _____
 DRAWN BY _____
 CHECKED BY _____

PLOT DATE = 10/26/2006
 FILE NAME = AP16114
 PLOT SCALE = AS SHOWN
 USER NAME = RUSBR